



TOYO TIRES

Open Roads Await

TECHNICAL CATALOGUE 2025



THE TOYO WAY

Company Philosophy

We will endeavor to continuously improve our products, and create value for everyone who we work with.

Our Mission

To create excitement and surprise with our products that exceed customer expectations and enriches society.

Our Vision

Our goal is to be company that:

- stays one step ahead of the future through constant technological innovation;
- drives entrepreneurial and creative spirit through a progressive culture; and
- shares in the enjoyment felt by everyone involved in our activities

TOYO TIRES



CONTENTS

About TOYO TIRES	4
Tire Business / Testing and Development	5
Motorsport & High Performance	6
EU Tire Label	8
Technology and Performance	9
Product Lines Overview	10
All Season Car Tire Range Overview	12
Van Tire Range Overview	13
Summer Car Tire Range Overview	14
SUV & 4 X 4 Tire Range Overview	15
Winter Car Tire Range Overview	16
Winter SUV & 4 X 4 Tire Range Overview	17
All Season Car Tires	18 - 25
Summer Car Tires / Old Timer Tires	26 - 39
Winter Car Tires	40 - 53
SUV & 4 X 4 Tires	54 - 69
Winter SUV & 4 X 4 Tires	70 - 81
Van/Light Truck Tires	82 - 91
Competition Tires	92 - 95
Original Equipment Overview	96 - 99
Tire Care & Maintenance	100 - 101



TOYO TIRES has been producing premium high-performance tires for more than 75 years and is one of the top ten tire manufacturers in the world.

The company was founded in 1945, is based in Japan and has been producing tires and automotive technologies ever since.

In 2005, the TOYO TIRE Europe GmbH was founded with headquarters in Germany (Willich) to organise the Europe-wide sales of light truck-, van- SUV-, off-road- and 4x4-tires.

In 2019, the first European research and development centre opened in Germany.

Since then, TOYO TIRES has been testing and developing its tire technologies on European test and race tracks for later use on the road.

In 2022, the first European factory was opened in Serbia and a new holding company was founded.

TOYO TIRES continues to grow and is constantly developing new, modern and sustainable tire technologies for the current mobility society and for future generations.



Tire Manufacturing Videos



PARTNER



TESTING & DEVELOPMENT

The European R&D Center combines material research with technology development. Collected information and knowledge is shared with other R&D Centers of TOYO as well as with the Corporate Technology Center in Japan, where our tire technology is developed. Here we are improving our knowledge and advanced technologies, and we also carry out tire tests. Before starting to sell a new product to the market, we test tires in real conditions on test tracks. TOYO TIRES have two test sites in Japan.



Miyazaki

In the southeast of Kyushu Island, is the main proving ground where high speed and strength tests are conducted as well as measurement of noise levels. The proving ground also includes tracks for handling assessment and analysis of steering stability.



Saroma

Our winter test course is in Saroma, on the north island of Hokkaido. At this site, engineers can make real world measurements of operating characteristics in winter conditions. Traction, braking and handling on ice and snow are all evaluated using these tracks.

SUSTAINABILITY OF OUR TIRES



To reduce the carbon footprint of tire production while minimising environmental impact, TOYO TIRES utilises renewable, sustainable, and recycled materials, alongside solar energy in the manufacturing process.



At the 2024 Tokyo Motor Show, TOYO TIRES introduced its innovative concept tire, featuring 90% sustainable materials. This groundbreaking tire incorporates butadiene rubber derived from CO2 emissions generated during production, turning a potential waste product into a valuable resource. Additionally, the carcass is crafted from bio-based polyester, while the steel belts and bead core utilise recycled steel.



We are passionately involved in premier automotive sports events worldwide, including the Dakar Rally and Endurance Racing, including the renowned Nürburgring 24h. Our dedication also encompasses challenging competitions like the Baja 1000 and the Pikes Peak Hill Climb, along with various major drift championships.

Participation in competitions allows us to test our products at the limits of performance. Experiencing tires in extreme conditions is crucial for driving material innovation, enhancing tire construction, and improving performance characteristics. The frequent victories of TOYO TIRES in competitive events demonstrate our commitment to quality and inspire us to continue advancing our technology.

The newly designed Proxes slick racing tires, used at the 24-hour race, utilise renewable materials including vegetable oils, sustainable silica from rice husk ash, and recycled wire in the bead core. These tires offer enhanced sustainability than earlier versions while delivering high speed and outstanding performance on the track.

The knowledge and insights gained from motorsport are incorporated into the development of Toyo's next-generation sustainable road tires.

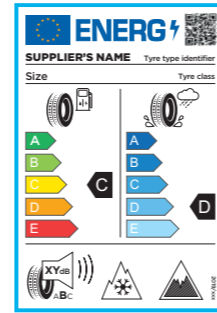
Sport is therefore deeply embedded in the brand identity of TOYO TIRES. We use new developments and innovations in technology to create products able to meet the high demands of a premium brand.



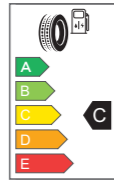


In order to provide standardised information on fuel efficiency, wet grip and external rolling noise, the European Union revised its compulsory label for all new tires, with effect from 1 May 2021. All relevant new tires must carry the revised EU label, which is intended to give end-users some essential information to help them when choosing new tires.

The QR code, read with a smartphone or other suitable reader, is intended to provide additional information:



1 Reduce environmental impact

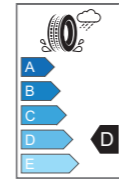


Fuel efficiency / Rolling Resistance

- Is expressed as 'rolling resistance'.
- Rolling resistance directly impacts fuel consumption and the environment.

At lower rolling resistance, the tire dissipates less energy, contributing less to resistive forces and thereby reducing fuel consumption and CO2 emission.

2 Increase safety



Wet grip performance

- Tires with excellent grip in the wet have shorter braking distances on wet roads.

The label displays a series of 5 classes, with tires with an "A" offering the highest wet grip and those with an "E" the lowest. Summer tires must be Grade E minimum.

3 Reduce noise production



Exterior rolling noise (noise level measured in dB)

- Graded A, B or C
- A indicates the lowest grade for noise, B means a medium grade, while C is the noisiest possible grade.

The ICE grip pictogram applies to Nordic winter tires for use on iced surfaces.

The SNOW grip pictogram represents tires for use in severe snow conditions.

PUBLISHED TIRE TESTS

The EU tire label is designed to show information regarding 3 criteria, however there are many other important performance factors to consider:

Test criteria	EU Tire Label	Tire Tests	TOYO TIRES
Dry conditions			
Braking	-	+	+
Driving stability	-	+	+
Handling	-	+	+
Wet conditions			
Braking	+	+	+
Driving stability	-	+	+
Handling	-	+	+
Aquaplaning	-	+	+
Steering	-	+	+
Tire / pattern noise			
Inside	-	+	+
Outside	+	+	+
Rolling resistance	+	+	+
Tire wear	-	+	+
O.E. test criteria	-	-	+



More information about tire labelling regulations as well as a list of FAQs is available from the European Commission : ec.europa.eu/energy/efficiency/tyres/labelling_en.htm



T-MODE

High-Efficiency and High-Precision Tire Development Platform

Over the years, TOYO TIRES has pioneered the development of vehicle-specific tires and ultra high-performance sport tires. Advanced polymer technology played a role in these breakthroughs, but they were also made possible by our proprietary virtual testing systems.

T-Mode, TOYO TIRES' latest form of this technology, uses computer simulation to virtually test vehicle-mounted tires in an array of driving conditions. Uneven tread wear, noise generation and a series of other factors are also analyzed. This data is then used to optimise tire design and enhance performance.

Nano Balance Technology

Fundamental Material Design Technology

Nano Balance Technology is a technology for developing ideal rubber materials with high precision through observation, prediction, material design, and production control, at the molecular (nano) level.

We use this to achieve a high level of both performance extremes, tire rolling resistance (low fuel consumption performance), and braking performance (wet grip performance), to offer a range of high value-added products. Moreover, we have launched a series of products made by using low fuel consumption tread that have excellent heat generation, based on the material design technology of Nano Balance Technology.

A.T.O.M.

Advanced Tire Operation Module

A.T.O.M. is a new production method to manufacture required parts and materials for tires.

In the conventional production method, tire parts such as wide section of treads are wound around a building drum and both edges are aligned and laminated together to make a green tire.

The section where the edges are laminated together is called a "joint." In contrast, the A.T.O.M. production method does not create joints as found in the conventional production method, and is referred to as "jointless."





PROXES

The Proxes tire line is a high-performance summer tire range for a wide variety of vehicle classes - from small to powerful sports cars and premium sports coupes. The models are distinguished by excellent controllability and dynamism, pronounced water drainage properties and high performance.



CELSIUS

The Celsius All-Season tire range offers year-round performance without the inconvenience of having to change your tires over twice a year. Celsius tires are true all-rounders - delivering safety, control and comfort in all seasons and throughout the life of the tire.



OPEN COUNTRY

The Open Country range of tires are high-strength, durable tires, designed for Crossovers and SUVs. They are characterised by short braking distances, high off-road grip, durability and high levels of comfort.



OBSERVE

Observe tires are designed for winter conditions. Used for studded and studless winter tires, the brand name has now been applied to lamellae winter tires so it now encompasses the entire winter range. Synonymous with safety and mobility, Observe tires offer superb winter performance wherever it is needed.



SNOWPROX

Snowprox is the name for the TOYO TIRES highway speed winter tire product range. Used to differentiate European winter tires from the more extreme versions, which are adapted to ice and snow covered roads in Scandinavia for example, the brand name will be phased out over the next few years. All new and replacement winter tires will bear the brand name "Observe".



NANOENERGY

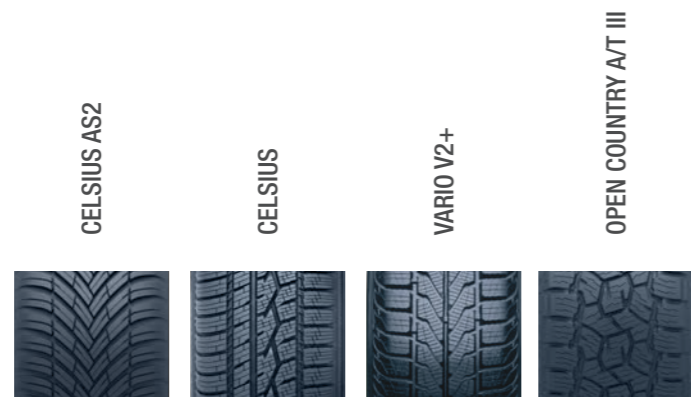
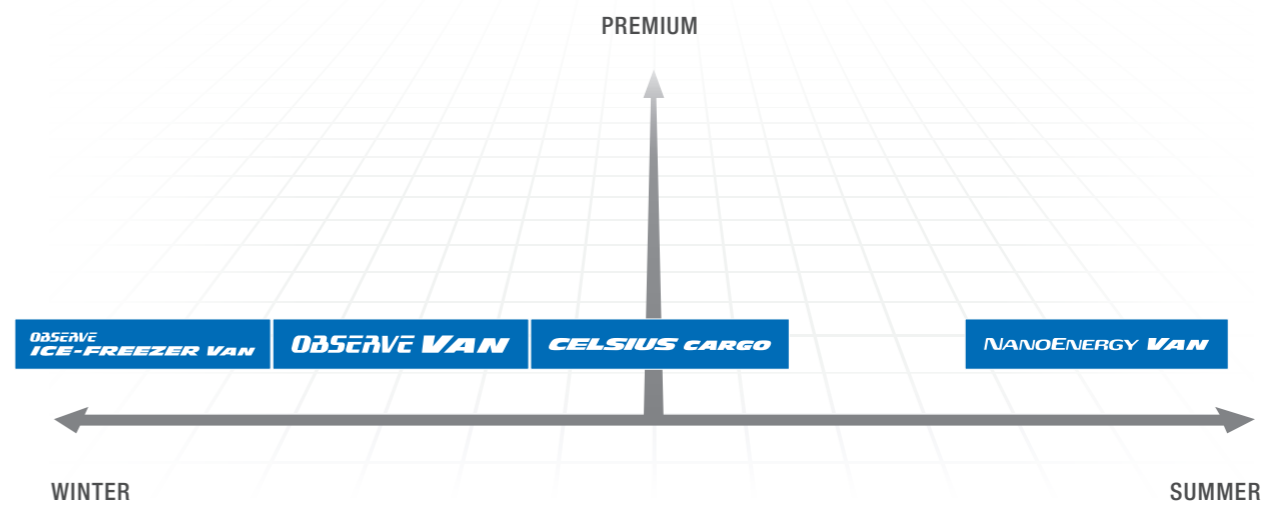
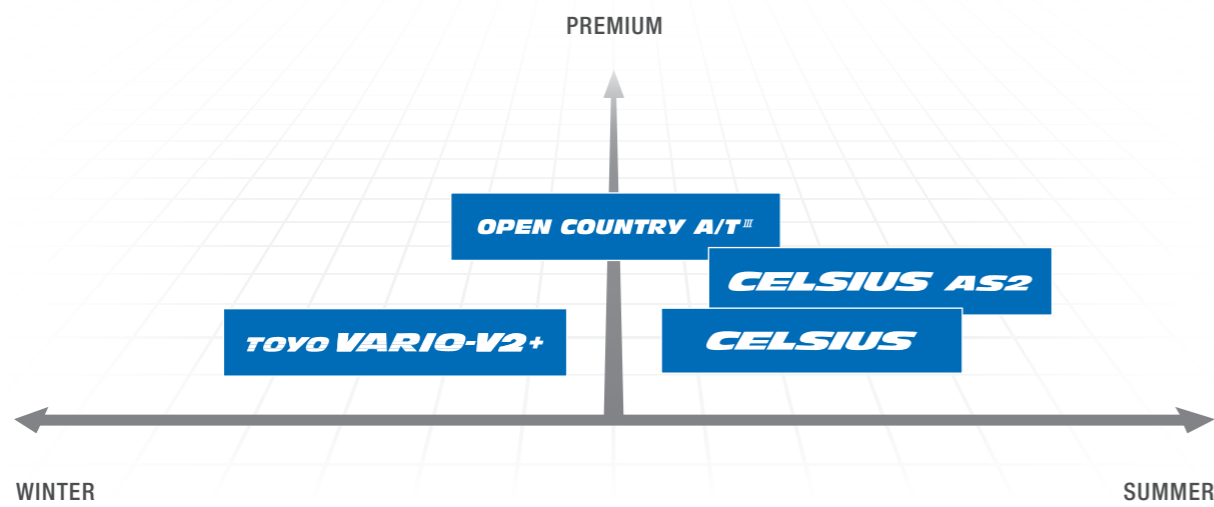
The NanoEnergy-line is specifically designed for commercial vehicles, offering exceptional wear resistance and longevity, along with a high level of fuel efficiency. This product line consists of a single model offered in a wide range of sizes





ALL SEASON CAR TIRE PRODUCT MAP

VAN TIRE PRODUCT MAP



Page 20 - 21 Page 22 - 23 Page 23 Page 24 - 25

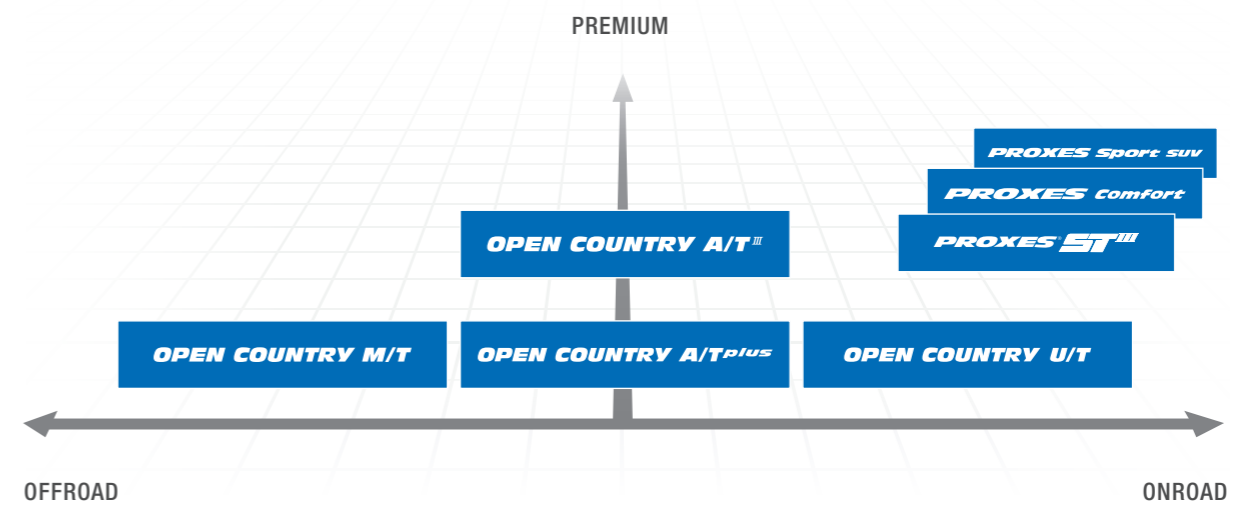
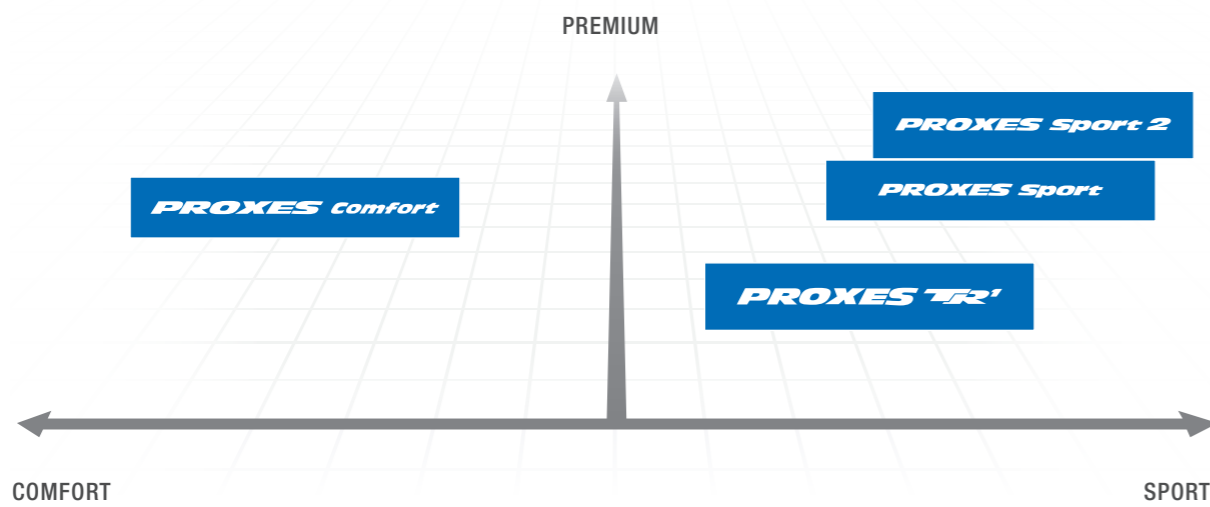


Page 84 - 85 Page 86 - 87 Page 88 - 89 Page 90 - 91



SUMMER CAR TIRE PRODUCT MAP

SUV & 4 X 4 TIRE PRODUCT MAP



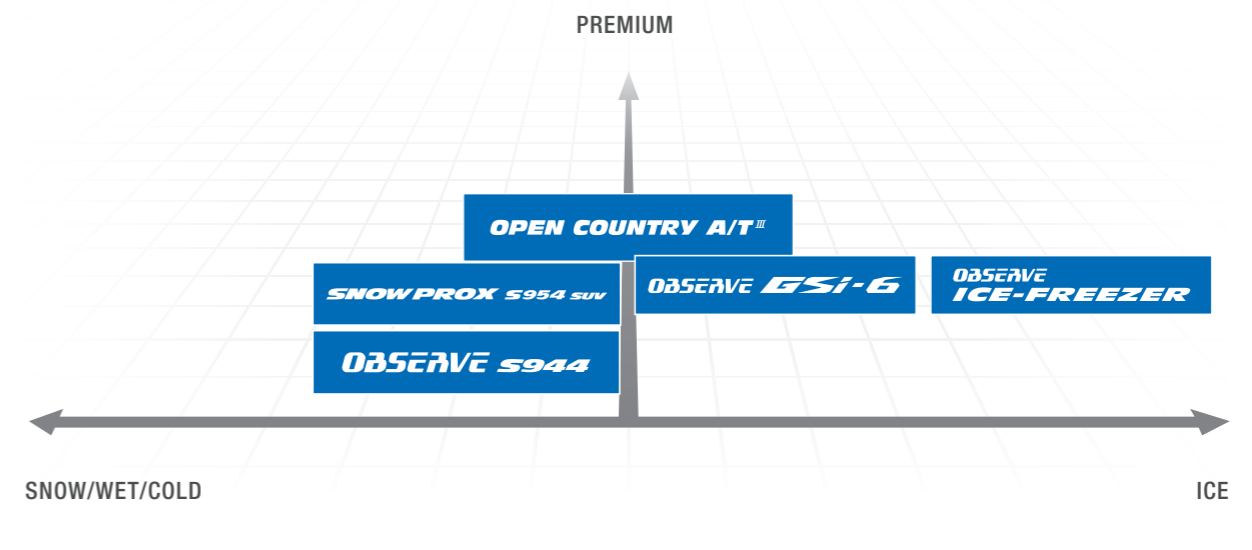
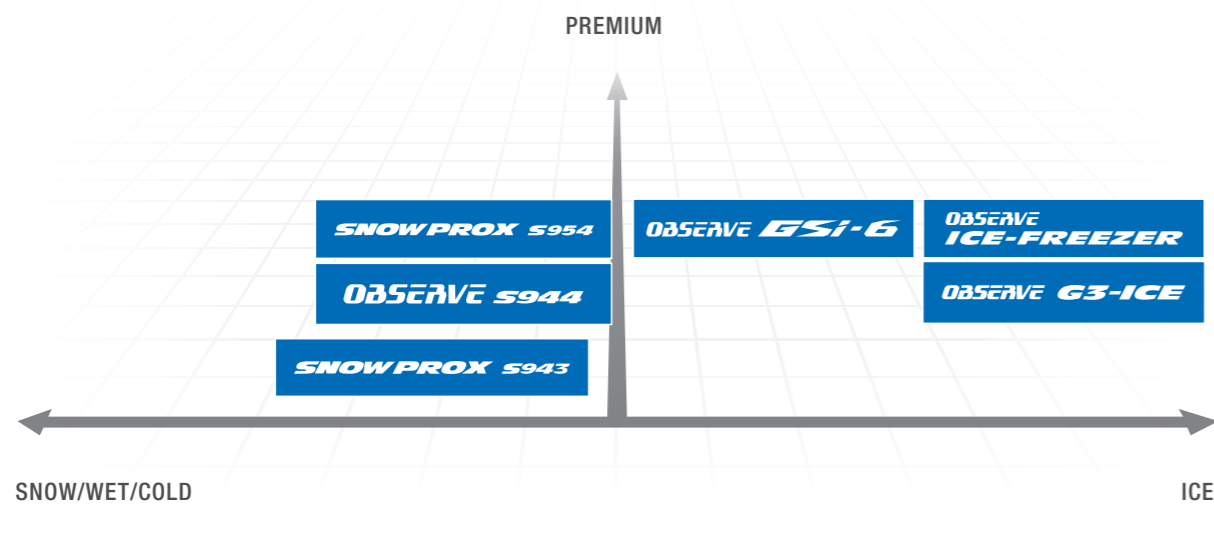
PROXES SPORT 2	PROXES COMFORT	PROXES TR1	PROXES SPORT
Page 22 - 31	Page 32 - 33	Page 34 - 35	Page 36 - 37

OPEN COUNTRY A/T III	PROXES SPORT SUV	PROXES COMFORT	PROXES ST III	OPEN COUNTRY U/T	OPEN COUNTRY A/T PLUS	OPEN COUNTRY M/T
Page 56 - 57	Page 58 - 59	Page 60 - 61	Page 62 - 63	Page 64 - 65	Page 66 - 67	Page 68 - 69



WINTER CAR TIRE PRODUCT MAP

WINTER SUV & 4 X 4 TIRE PRODUCT MAP



OBSERVE S944
 SNOWPROX S954
 SNOWPROX S943
 OBSERVE GSi-6
 OBSERVE ICE-FREEZER
 OBSERVE G3-ICE



Page 42 - 43 Page 44 - 45 Page 46 - 47 Page 48 - 49 Page 50 - 51 Page 52 - 53

OPEN COUNTRY A/T III
 OBSERVE S944 SUV
 SNOWPROX S954 SUV
 OBSERVE GSi-6
 OBSERVE ICE-FREEZER



Page 72 - 73 Page 74 - 75 Page 76 - 77 Page 78 - 79 Page 80 - 81



ALL SEASON CAR TIRES

TOYO CELSIUS AS2

TOYO CELSIUS

OPEN COUNTRY A/T III

CELSIUS AS2



The **CELSIUS AS2** is an all-season tire with a directional tread pattern, which can be driven both in summer and winter.

Its winter suitability is proven by the 3PMSF (snowflake symbol) on the side wall.

Both the tread and the rubber compound allow for grip and performance on dry and wet roads.



Tire Videos
TOYO Celsius AS2

16 - 19 inch. Speed index T, V and W.



Aspect Ratio 35 - 65. Width 175mm - 275mm.

T-MODE Nano Balance Technology A.T.O.M.

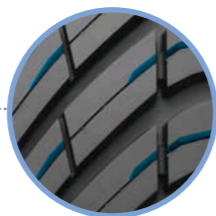
Tread Pattern Features



Directional tread blocks with small sipes enhance traction and grip.



Directional grooves in the tread support the water/mud drainage and improve wet grip.



Small grooves in the tread blocks support the water drainage from the tread.

TOYO CELSIUS AS2

RIM DIA.	ASPECT RATIO	TIRE SIZE	LOAD INDEX SPEED SYMBOL	TREAD DEPTH (mm)	INFLATED DIMENSION		LOADED DIMENSION		ROLLING CIRCUMFERENCE (mm)	MEASURING RIM WIDTH (Inch)	ALTERNATE RIM (Inch)	RRC	Wet	Noise db	ABC Noise	Rim Protector
					OVERALL DIA. (mm)	OVERALL WIDTH (mm)	STATIC RADIUS (mm)	STATIC WIDTH (mm)								
15	65	185/65 R15	92V XL	8.0	621	189	284	206	1894	5.5	5.0 - 6.5	C	B	71	B	-
		195/65 R15	91H	7.8	635	201	289	219	1937	6.0	5.5 - 7.0	D	B	71	B	-
	60	185/60 R15	88V XL	7.9	603	189	277	206	1839	5.5	5.0 - 6.5	D	B	71	B	-
		175/55 R15	77T	7.4	573	182	265	198	1748	5.5	5.0 - 6.0	D	B	71	B	-
16	55	185/55 R15	82H	7.5	585	194	270	211	1784	6.0	5.0 - 6.5	D	B	71	B	-
		195/55 R15	89V XL	7.9	595	201	274	219	1815	6.0	5.5 - 7.0	D	B	71	B	-
	65	215/65 R16	102V XL	8.3	686	221	312	241	2092	6.5	6.0 - 7.5	C	B	71	B	-
		175/60 R16	86H XL	7.8	616	177	285	193	1879	5.0	5.0 - 6.0	C	B	71	B	-
16	60	195/60 R16	93V XL	8.0	640	201	294	219	1952	6.0	5.5 - 7.0	C	B	71	B	-
		205/60 R16	96V XL	8.1	652	209	299	228	1989	6.0	5.5 - 7.5	C	B	71	B	-
	55	215/60 R16	99V XL	8.2	664	221	304	241	2025	6.5	6.0 - 7.5	C	B	71	B	-
		185/55 R16	87V XL	7.8	610	194	283	211	1861	6.0	5.0 - 6.5	C	B	71	B	-
17	65	215/65 R16	91V XL	7.9	620	201	287	219	1891	6.0	5.5 - 7.0	D	B	71	B	-
		205/55 R16	91H	8.0	632	214	291	233	1928	6.5	5.5 - 7.5	C	B	71	B	-
	55	205/55 R16	94V XL	8.0	632	214	291	233	1928	6.5	5.5 - 7.5	C	B	71	B	-
		215/55 R16	93V	8.1	642	226	295	246	1958	7.0	6.0 - 8.0	C	B	71	B	-
17	45	225/55 R16	99W XL	8.2	654	233	300	254	1995	7.0	6.0 - 8.0	C	B	71	B	-
		195/45 R16	84V XL	7.7	582	195	272	212	1775	6.5	6.0 - 7.5	D	B	71	B	•
	65	215/45 R16	90V XL	7.9	600	213	279	232	1830	7.0	7.0 - 8.0	D	B	71	B	•
		225/65 R17	106V XL	8.4	724	228	330	248	2208	6.5	6.0 - 8.0	C	B	71	B	-
17	60	235/65 R17	108W XL	8.5	740	242	335	262	2251	7.0	6.5 - 8.5	C	B	71	B	-
		215/60 R17	100V XL	8.2	694	222	316	241	2104	6.5	6.0 - 7.5	C	B	71	B	-
	55	225/60 R17	103V XL	8.3	704	229	321	248	2141	6.5	6.0 - 8.0	C	B	71	B	-
		205/55 R17	95W XL	8.0	658	214	304	233	2007	6.5	5.5 - 7.5	C	B	71	B	-
18	55	215/55 R17	98W XL	8.1	668	226	308	246	2037	7.0	6.0 - 7.5	C	B	71	B	-
		225/55 R17	101W XL	8.2	680	233	313	254	2074	7.0	6.0 - 7.5	C	B	71	B	-
	50	235/55 R17	103W XL	8.3	690	245	317	267	2105	7.5	6.5 - 8.5	C	B	71	B	-
		205/50 R17	93W XL	7.4	638	214	296	233	1946	6.5	5.5 - 7.5	C	B	71	B	•
18	45	205/50 R17	93Y XL	7.4	638	214	296	233	1946	6.5	5.5 - 7.5	C	B	71	B	•
		215/50 R17	95W XL	8.0	648	226	300	246	1976	7.0	6.0 - 7.5	C	B	71	B	•
	60	225/50 R17	98Y XL	7.6	658	233	304	254	2007	7.0	6.0 - 8.0	C	B	71	B	•
		205/45 R17	88W XL	7.8	616	206	288	225	1879	7.0	6.5 - 7.5	D	B	71	B	•
18	45	215/45 R17	91W XL	7.9	626	213	292	232	1909	7.0	7.0 - 8.0	D	B	71	B	•
		225/45 R17	94W XL	8.0	634	225	295	245	1934	7.5	7.0 - 8.5	C	B	71	B	•
	60	235/45 R17	97Y XL	7.6	644	236	299	257	1964	8.0	7.5 - 9.0	C	B	71	B	•
		245/45 R17	99Y XL	7.7	652	243	302	265	1988	8.0	7.5 - 9.0	C	B	71	B	•
19	60	225/60 R18	104V XL	8.3	727	228	334	248	2217	6.5	6.0 - 8.0	C	B	71	B	-
		235/60 R18	107W XL	8.4	739	240	339	262	2254	7.0	6.5 - 8.5	C	B	71	B	-
	55	215/55 R18	99V XL	8.1	693	226	320	246	2113	7.0	6.0 - 7.5	C	B	71	B	-
		225/55 R18	102V XL	8.2	705	233	325	254	2150	7.0	6.0 - 8.0	C	B	71	B	-
19	50	235/55 R18	104V XL	8.3	715	245	329	267	2181	7.5	6.5 - 8.5	C	B	71	B	-
		255/55 R18	109W XL	8.5	737	265	338	289	2248	8.0	7.0 - 9.0	C	B	72	B	-
	45	215/50 R18	92W	8.0	673	226	313	246	2053	7.0	6.0 - 7.5	C	B	71	B	•
		225/50 R18	99W XL	8.1	683	233	317	254	2083	7.0	6.0 - 8.0	C	B	71	B	•
19	45	235/50 R18	101V XL	8.2	693	245	320	267	2114	7.5	6.5 - 8.5	C	B	71	B	•
		225/45 R18	95Y XL	7.5	659	225	307	245	2010	7.5	7.0 - 8.5	C	B	71	B	•
	40	235/45 R18	98Y XL	7.6	669	236	311	257	2040	8.0	7.5 - 9.0	C	B	71	B	•
		245/45 R18	100Y XL	7.7	677	243	314	265	2065	8.0	7.5 - 9.0	C	B	71	B	•
20	55	225/40 R18	92Y XL	7.4	637	230	299	251	1943	8.0	7.5 - 9.0	C	B	71	B	•
		235/40 R18	95Y XL	7.5	645	241	302	263	1967	8.5	8.0 - 9.5	C	B	71	B	•
	40	245/40 R18	97Y XL	7.6	653	248	305	270	1992	8.5	8.0 - 9.5	D	B	71	B	•
		235/55 R19	105W XL	8.3	741	245	342	267	2260	7.5	6.5 - 8.5	C	B	71	B	-
20	50	215/50 R19	93T	8.0	699	226	326	246	2132	7.0	6.0 - 7.5	C	B	71	B	•
		255/50 R19	107W XL	8.4	739	265	341	289	2254	8.0	7.0 - 9.0	C	B	72	B	•
	35	235/40 R19	96Y XL	7.5	671	241	315	263	2046	8.5	8.0 - 9.5	D	B	71	B	•
		255/40 R19	100Y XL	7.7	687	260	321	283	2095	9.0	8.5 - 10.0	D	B	72	B	•
20	45	235/35 R19	91Y XL	7.4	651	242	305	263	1973	8.5	8.0 - 9.5	D	B	71	B	•
		215/45 R20	95T XL	7.9	702	213	330	232	2141	7.0	7.0 - 8.0	C	C	71	B	•
	40	245/45 R20	103W XL	8.2	728	243	340	265	2220	8.0	8.0 - 9.5	C	B	71	B	•
		255/45 R20	105W XL	8.3	738	255	344	278	2251	8.5	8.0 - 9.5	C	B	72	B	•
20	40	265/45 R20	108Y XL	7.7	746	266	347	290	2275	9.0	8.5 - 10.0	C	B	72	B	•
		275/45 R20	110Y XL	7.7	756	273	351	297	2306	9.0	8.5 - 10.0	C	B	72	B	•
	40	245/40 R20	99Y XL	7.6	704	248	330	270	2147	8.5	8.0 - 9.5	C	B	71	B	•
		255/40 R20	101Y XL	7.7	712	260	333	283	2172	9.0	8.5 - 10.0	C	B	72	B	•
275/40 R20	106Y XL	7.7	728	278	340	303	2220	9.5	9.0 - 11.0	C	B	72	B	•		



CELSIUS



The **CELSIUS** tire features an innovative asymmetrical tread pattern, making it suitable for both summer and winter driving.

Its winter performance is certified by the 3PMSF (snowflake symbol) displayed on the sidewall, ensuring reliable traction in snowy conditions.

Designed for optimal grip and performance, the advanced tread and rubber compound provide excellent handling on both dry and wet roads.

M+S marked.



14 - 20 inch. Speed index T, H and V.



Aspect Ratio 45 - 70. Width 145mm - 235mm.

Tread Pattern Features



Asymmetrical tread pattern with large grooves ensure a good contact area and water evacuation.

Small rubber strips between the tread blocks improve grip on wintry roads and grip like claws on snow-covered roads.

The tread blocks are covered with fine sipes, that provide traction and grip as well as a quick water drainage.

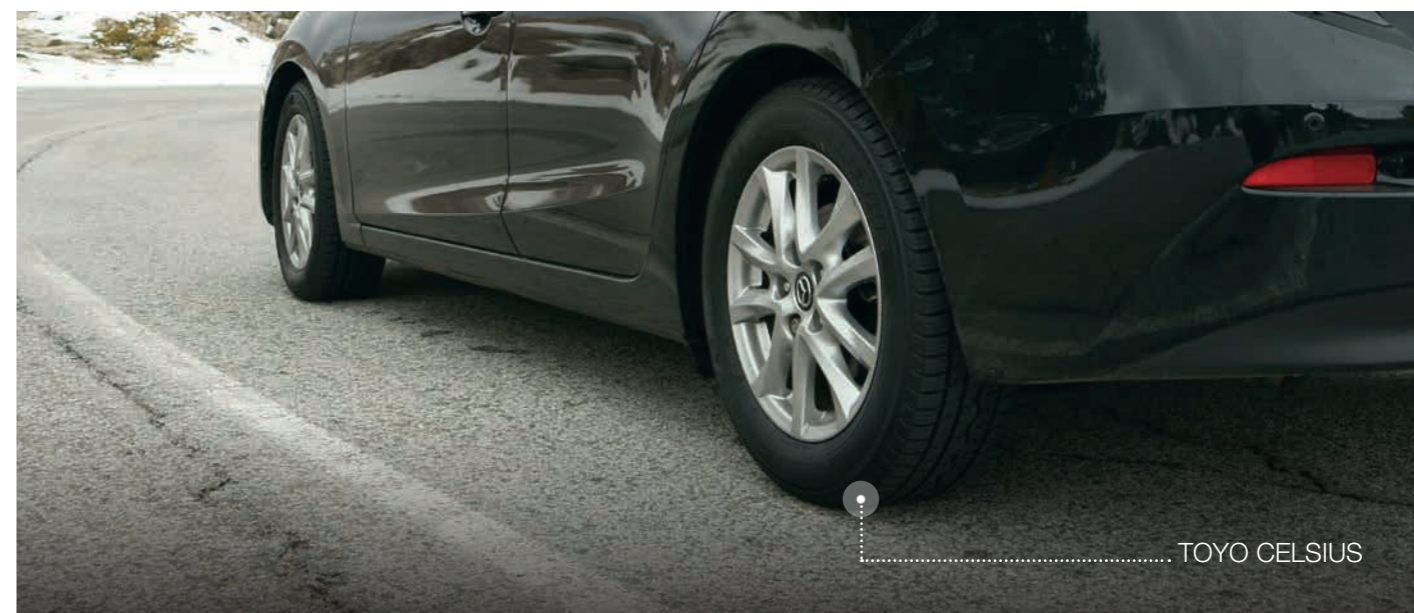
TOYO CELSIUS

RIM DIA.	ASPECT RATIO	TIRE SIZE	LOAD INDEX SPEED SYMBOL	TREAD DEPTH (mm)	INFLATED DIMENSION		LOADED DIMENSION		ROLLING CIRCUMFERENCE (mm)	MEASURING RIM WIDTH (Inch)	ALTERNATE RIM (Inch)	RRC	Wet	Noise db	ABC Noise	Rim Protector
					OVERALL DIA. (mm)	OVERALL WIDTH (mm)	STATIC RADIUS (mm)	STATIC WIDTH (mm)								
14	70	165/70 R14	85T	8.4	588	170	268	185	1793	5.0	4.0 - 5.5	D	C	69	B	-
		175/70 R14	84T	8.5	602	177	274	193	1836	5.0	4.5 - 6.0	E	C	69	B	-
	65	155/65 R14	75T	8.2	558	157	257	171	1702	4.5	4.5 - 5.5	E	C	69	B	-
		165/65 R14	79T	8.3	570	170	261	185	1739	5.0	4.5 - 6.0	E	C	69	B	-
		175/65 R14	82T	8.4	584	177	267	193	1781	5.0	5.0 - 6.0	E	C	69	B	-
		175/65 R14	86T	8.4	584	177	267	193	1781	5.0	5.0 - 6.0	E	C	69	B	-
15	65	185/65 R14	86H	8.5	596	189	271	206	1818	5.5	5.0 - 6.5	E	C	69	B	-
		185/65 R14	86T	8.5	596	189	271	206	1818	5.5	5.0 - 6.5	E	C	69	B	-
		145/65 R15	72T	8.1	569	191	264	163	1735	4.5	4.0 - 5.0	E	C	69	B	-
	60	165/65 R15	81T	8.3	595	170	274	185	1815	5.0	4.5 - 6.0	E	C	69	B	-
		175/65 R15	84H	8.4	609	177	279	193	1857	5.0	5.0 - 6.0	E	C	69	B	-
		155/60 R15	74T	8.1	567	200	263	171	1729	4.5	4.4 - 5.5	E	C	70	B	-
50	165/60 R15	77H	8.3	579	170	268	185	1766	5.0	4.5 - 6.0	E	C	69	B	-	
	195/60 R15	88H	8.5	615	204	282	219	1876	6.0	5.5 - 7.0	D	C	70	B	-	
	195/50 R15	82H	8.4	577	208	267	219	1760	6.0	5.5 - 7.0	E	C	70	B	•	
16	50	185/50 R16	81H	8.3	592	225	275	211	1806	6.0	5.0 - 6.5	E	C	70	B	•
	45	205/45 R16	83H	8.5	590	226	275	224	1799	7.0	6.5 - 7.5	E	C	72	B	•
17	65	215/65 R17	99V	8.3	712	228	325	241	2172	7.0	6.0 - 7.5	D	C	72	B	-
	50	235/50 R17	100V	8.3	668	244	308	267	2037	7.5	6.5 - 8.5	D	C	72	B	•
20	55	195/55 R20	95H	8.4	722	253	337	219	2202	6.0	5.5 - 7.0	D	C	72	B	•

TOYO VARIO-V2+

SOME SIZES AVAILABLE AS OLDER MODEL, TOYO VARIO-V2+

RIM DIA.	ASPECT RATIO	TIRE SIZE	LOAD INDEX SPEED SYMBOL	TREAD DEPTH (mm)	INFLATED DIMENSION		LOADED DIMENSION		ROLLING CIRCUMFERENCE (mm)	MEASURING RIM WIDTH (Inch)	ALTERNATE RIM (Inch)	RRC	Wet	Noise db	ABC Noise	Rim Protector
					OVERALL DIA. (mm)	OVERALL WIDTH (mm)	STATIC RADIUS (mm)	STATIC WIDTH (mm)								
13	80	145/80 R13	75T	8.2	561	140	255	153	1711	4.0	3.5 - 5.0	E	D	70	B	-
		155/80 R13	79T	8.3	577	153	261	167	1760	4.5	4.0 - 5.0	E	D	70	B	-
15	70	155/70 R13	75T	8.4	550	153	251	167	1678	4.5	4.0 - 5.0	E	D	70	B	-
		195/70 R15	97T	8.8	559	193	257	210	2004	6.0	5.0 - 6.5	D	D	72	B	-



TOYO CELSIUS





OPEN COUNTRY A/T III



The **OPEN COUNTRY A/T III** is an off-road tire with an asymmetrical profile that can be used in both summer and winter.

Its suitability for winter use is confirmed by the 3PMSF (snowflake symbol) on the sidewall.

The profile supports off-road driving, e.g. when used in forestry, but also on wintry and muddy roads.

M+S marked.

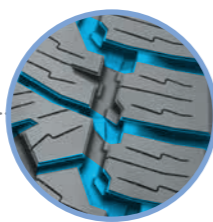


15 - 20 inch. Speed index S, T and H.

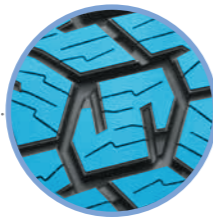
B - E	C - D	72 - 75	B	✓	-

Aspect Ratio 50 - 82. Width 195mm - 285mm.

Tread Pattern Features



Equipped with numerous sipes and grooves on the tire shoulder, the tread design quickly disperses water and mud, providing consistent and strong road contact.



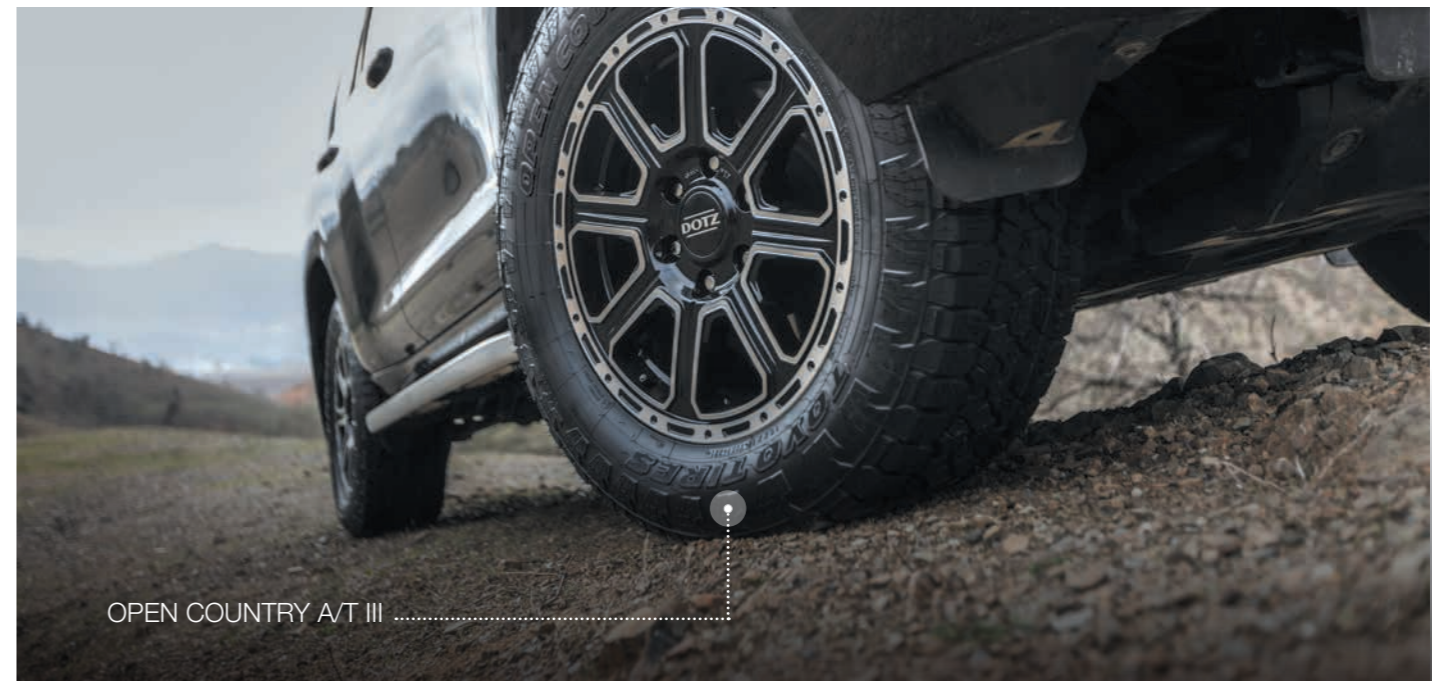
Wide tread blocks optimise the contact area.



Small blocks on the side wall improve movement on terrain.

OPEN COUNTRY A/T III

RIM DIA.	ASPECT RATIO	TIRE SIZE	LOAD INDEX	SPEED SYMBOL	TREAD DEPTH (mm)	INFLATED DIMENSION		LOADED DIMENSION		ROLLING CIRCUMFERENCE (mm)	MEASURING RIM WIDTH (Inch)	ALTERNATE RIM (Inch)	RRC	Wet	Noise db	ABC Noise	Rim Protector
						OVERALL DIA. (mm)	OVERALL WIDTH (mm)	STATIC RADIUS (mm)	STATIC WIDTH (mm)								
15	80	195/80 R15	96S		8.5	693	196	312	214	2114	5.5	5.0 - 6.5	D	D	72	B	-
	75	215/75 R15	100T		8.7	703	216	316	235	2144	6.0	5.5 - 7.0	D	D	72	B	-
		225/75 R15	102T		8.8	719	223	322	243	2193	6.0	6.0 - 7.5	D	D	72	B	-
		235/75 R15	109T		8.9	733	235	328	256	2236	6.5	6.0 - 8.0	D	D	72	B	-
	70	255/70 R15	108T		9.1	739	260	330	283	2254	7.5	6.5 - 8.5	D	D	73	B	-
		265/70 R15	112T		9.2	753	272	336	296	2297	8.0	7.0 - 9.0	D	D	73	B	-
16	82	205/82 R16	110/108T		10.9	736	208	332	227	2245	6.0	6.0	E	D	75	B	-
	70	215/70 R16	100T		8.7	708	221	321	241	2159	6.5	5.5 - 7.0	D	D	72	B	-
		225/70 R16	103H		8.8	722	228	326	249	2202	6.5	6.0 - 7.5	D	D	72	B	-
		235/70 R16	106T		8.9	736	240	332	262	2245	7.0	6.0 - 8.0	D	D	72	B	-
		245/70 R16	111T		9.0	750	248	337	270	2288	7.0	6.5 - 8.0	D	D	72	B	-
		255/70 R16	111T		9.1	764	260	343	283	2330	7.5	6.5 - 8.5	D	D	73	B	-
		265/70 R16	112T		9.2	778	272	348	296	2373	8.0	7.0 - 9.0	D	D	73	B	-
		275/70 R16	114T		9.3	792	279	354	304	2416	8.0	7.0 - 9.0	D	D	73	B	-
17	70	245/70 R17	110T		9.0	776	248	350	270	2367	7.0	6.5 - 8.0	D	D	72	B	-
	65	265/70 R17	115T		9.2	804	272	361	296	2452	8.0	7.0 - 9.0	D	D	73	B	-
		225/65 R17	102H		8.8	724	228	330	249	2208	6.5	6.0 - 8.0	D	D	72	B	-
		235/65 R17	108H		8.9	738	240	335	262	2251	7.0	6.5 - 8.5	D	D	72	B	-
		245/65 R17	111H		9.0	750	248	340	270	2288	7.0	7.0 - 8.5	D	D	72	B	-
		255/65 R17	114H		9.1	764	260	345	283	2330	7.5	7.0 - 9.0	D	D	73	B	-
		265/65 R17	112H		9.2	776	272	350	296	2367	8.0	7.5 - 9.5	D	D	73	B	-
18	60	215/60 R17	96H		8.7	690	221	317	241	2105	6.5	6.0 - 7.5	D	D	72	B	-
	70	255/70 R18	113T		9.1	815	260	368	283	2486	7.5	6.5 - 8.5	D	D	73	B	-
		265/70 R18	116H		8.0	829	272	374	296	2528	8.0	7.0 - 9.0	B	C	73	B	-
		235/60 R18	107H		8.9	739	240	339	262	2254	7.0	6.5 - 8.5	D	D	72	B	-
		255/60 R18	112H		9.1	763	260	348	283	2327	7.5	7.0 - 9.0	D	D	73	B	-
		265/60 R18	110H		9.2	775	272	353	296	2364	8.0	7.5 - 9.5	D	D	73	B	-
19	55	255/55 R19	111H		-	-	-	-	-	-	-	7.0 - 9.0	D	D	73	B	-
	60	275/60 R20	115H		9.3	838	279	383	304	2556	8.0	7.5 - 9.5	D	D	73	B	-
20	50	265/50 R20	107H		9.2	774	277	358	302	2361	8.5	7.5 - 9.5	D	D	73	B	-
		285/50 R20	112H		9.4	794	297	366	324	2422	9.0	8.0 - 10.0	D	D	75	B	-



OPEN COUNTRY A/T III



SUMMER CAR TIRES

PROXES SPORT 2

PROXES COMFORT

PROXES TR1

PROXES SPORT

OLD TIMER



PROXES Sport 2



The **PROXES Sport 2** is an ultra-high-performance tire for cars and SUVs with an asymmetrical tread pattern for highpowered and sporty vehicles. The tire enables precise handling even in corners.

Special Feature

The tread of the PROXES Sport 2 consists of two different rubber compounds. The outer shoulder has a stiff compound for improved handling performance and is optimised for dry surfaces.

The mixture on the inside is more flexible for improved wet grip and low-temperature performance.

17 - 22 inch. Speed index V, W and Y.



Aspect Ratio 30 - 60. Width 205mm - 325mm.

Tread Pattern Features



Tread grooves in the shoulder area improve water drainage and wet grip.

Groove edges ensure excellent traction and reliable braking performance.

Straight circumferential tread grooves improve the handling in wet conditions.

PROXES SPORT 2

RIM DIA.	ASPECT RATIO	TIRE SIZE	LOAD INDEX SPEED SYMBOL	TREAD DEPTH (mm)	INFLATED DIMENSION		LOADED DIMENSION		ROLLING CIRCUMFERENCE (mm)	MEASURING RIM WIDTH (Inch)	ALTERNATE RIM (Inch)	RRC	Wet	Noise db	ABC Noise	Rim Protector
					OVERALL DIA. (mm)	OVERALL WIDTH (mm)	STATIC RADIUS (mm)	STATIC WIDTH (mm)								
17	55	215/55 R17	98Y	7.3	668	226	308	246	2037	7.0	6.0 - 7.5	C	A	71	B	•
		225/55 R17	101Y	7.3	680	233	313	254	2074	7.0	6.0 - 8.0	C	A	71	B	•
	50	205/50 R17	93Y	7.1	638	214	296	233	1946	6.5	5.5 - 7.5	D	A	71	B	•
		215/50 R17	95Y	7.2	648	226	300	246	1976	7.0	6.0 - 7.5	C	A	71	B	•
	45	205/45 R17	88Y	7.0	616	206	288	224	1879	7.0	6.5 - 7.5	D	A	71	B	•
		215/45 R17	91Y	7.1	626	213	292	232	1909	7.0	7.0 - 8.0	D	A	71	B	•
40	225/45 R17	94Y	7.2	634	225	295	245	1934	7.5	7.0 - 8.5	D	A	71	B	•	
	235/45 R17	97Y	7.3	644	236	299	257	1964	8.0	7.5 - 9.0	C	A	71	B	•	
	245/45 R17	99Y	7.3	652	243	302	265	1989	8.0	7.5 - 9.0	C	A	71	B	•	
18	60	235/60 R18	107W	7.3	739	240	338	262	2254	7.0	6.5 - 8.5	C	A	71	B	•
		265/60 R18	114V	7.3	775	272	352	296	2364	8.0	7.5 - 9.5	C	A	71	B	•
	55	235/55 R18	104Y	7.3	715	245	329	267	2181	7.5	6.5 - 8.5	C	A	71	B	•
		255/55 R18	109Y	7.3	737	265	338	289	2248	8.0	7.0 - 9.0	C	A	71	B	•
	50	235/50 R18	101Y	7.3	693	245	320	267	2114	7.5	6.5 - 8.5	C	A	71	B	•
		245/50 R18	104Y	7.3	703	253	324	276	2144	7.5	7.0 - 8.5	C	A	71	B	•
	45	215/45 R18	93Y	7.1	653	212	304	232	1992	7.0	7.0 - 8.0	D	A	71	B	•
		225/45 ZR18	95Y	7.2	659	225	307	245	2010	7.5	7.0 - 8.5	D	A	71	B	•
		235/45 ZR18	98Y	7.3	669	236	311	257	2040	8.0	7.5 - 9.0	C	A	71	B	•
		245/45 R18	100Y	7.3	677	243	314	265	2065	8.0	7.5 - 9.0	C	A	71	B	•
	40	255/45 ZR18	103Y	7.3	687	255	318	278	2095	8.5	8.0 - 9.5	C	A	71	B	•
		215/40 R18	89Y	7.0	629	218	296	238	1918	7.5	7.0 - 8.5	D	A	71	B	•
225/40 R18		92Y	7.1	637	230	299	251	1943	8.0	7.5 - 9.0	D	A	71	B	•	
235/40 ZR18		95Y	7.2	642	246	302	263	1958	8.5	8.0 - 9.5	D	A	71	B	•	
35	245/40 ZR18	97Y	7.3	653	249	305	270	1992	8.5	8.0 - 9.5	C	A	71	B	•	
	255/40 ZR18	99Y	7.3	658	263	308	283	2007	9.0	8.5 - 10.0	C	A	71	B	•	
	275/40 ZR18	103Y	7.3	674	281	314	303	2056	9.5	9.0 - 11.0	C	A	71	B	•	
	225/35 ZR18	87Y	7.0	615	230	290	251	1876	8.0	8.0 - 9.5	D	A	71	B	•	
	245/35 R18	92Y	7.2	629	248	296	270	1918	8.5	8.0 - 9.5	D	A	71	B	•	
55	255/35 R18	94Y	7.3	635	260	298	283	1937	9.0	8.5 - 10.0	D	A	71	B	•	
	265/35 ZR18	97Y	7.3	643	271	301	295	1961	9.5	9.0 - 10.5	C	A	71	B	•	
	275/35 ZR18	99Y	7.3	649	278	303	303	1979	9.5	9.0 - 11.0	C	A	71	B	•	
	50	235/55 R19	105Y	7.3	741	245	342	267	2260	7.5	6.5 - 8.5	C	A	71	B	•
255/55 R19		111Y	7.3	763	265	351	289	2327	8.0	7.0 - 9.0	C	A	71	B	•	
45	235/50 R19	103Y	7.3	719	245	333	267	2193	7.5	6.5 - 8.5	C	A	71	B	•	
	255/50 R19	107Y	7.3	739	265	341	289	2254	8.0	7.0 - 9.0	C	A	71	B	•	
40	265/50 ZR19	110Y	7.3	749	277	345	302	2284	8.5	7.5 - 9.5	C	A	71	B	•	
	225/45 ZR19	96Y	7.2	685	225	320	245	2089	7.5	7.0 - 8.5	C	A	71	B	•	
	245/45 ZR19	102Y	7.3	702	245	327	265	2141	8.0	7.5 - 9.0	C	A	71	B	•	
	255/45 R19	104Y	7.3	713	255	331	278	2175	8.5	8.0 - 9.5	C	A	71	B	•	
35	285/45 ZR19	111Y	7.3	739	285	341	311	2254	9.5	9.0 - 10.5	C	A	72	A	•	
	225/40 ZR19	93Y	7.1	663	230	312	251	2022	8.0	7.5 - 9.0	D	A	71	B	•	
50	235/40 R19	96Y	7.2	671	241	315	263	2046	8.5	8.0 - 9.5	D	A	71	B	•	
	245/40 ZR19	98Y	7.3	679	248	318	270	2071	8.5	8.0 - 9.5	C	A	71	B	•	
	255/40 R19	100Y	7.3	687	260	321	283	2095	9.0	8.5 - 10.0	C	A	71	B	•	
	265/40 ZR19	102Y	7.3	695	271	324	295	2120	9.5	9.0 - 10.5	C	A	71	B	•	
40	275/40 ZR19	105Y	7.3	703	278	327	303	2144	9.5	9.0 - 11.0	C	A	71	B	•	
	225/35 ZR19	88Y	7.0	641	230	303	251	1955	8.0	8.0 - 9.5	D	A	71	B	•	
	235/35 ZR19	91Y	7.1	647	241	305	263	1973	8.5	8.0 - 9.5	D	A	71	B	•	
35	245/35 ZR19	93Y	7.2	655	248	308	270	1998	8.5	8.0 - 9.5	D	A	71	B	•	



RIM DIA.	ASPECT RATIO	TIRES SIZE	LOAD INDEX SPEED SYMBOL	TREAD DEPTH (mm)	INFLATED DIMENSION		LOADED DIMENSION		ROLLING CIRCUMFERENCE (mm)	MEASURING RIM WIDTH (Inch)	ALTERNATE RIM (Inch)	RRC	Wet	Noise db	ABC Noise	Rim Protector
					OVERALL DIA. (mm)	OVERALL WIDTH (mm)	STATIC RADIUS (mm)	STATIC WIDTH (mm)								
19	35	255/35 ZR19	96Y	7.3	661	260	311	283	2016	9.0	8.5 - 10.0	D	A	71	B	•
		265/35 ZR19	98Y	7.3	669	271	314	295	2040	9.5	9.0 - 10.5	C	A	71	B	•
		275/35 ZR19	100Y	7.3	675	269	316	303	2059	9.5	9.0 - 11.0	C	A	71	B	•
		285/35 ZR19	103Y	7.3	683	290	319	316	2083	10.0	9.5 - 11.0	C	A	72	A	•
	30	255/30 ZR19	91Y	7.2	637	260	301	283	1943	9.0	8.5 - 9.5	D	A	71	B	•
		265/30 ZR19	93Y	7.3	643	271	304	295	1961	9.5	9.0 - 10.0	D	A	71	B	•
		275/30 ZR19	96Y	7.3	649	278	306	303	1979	9.5	9.0 - 10.0	D	A	71	B	•
		305/30 ZR19	102Y	7.3	668	312	313	341	2037	11.0	10.5 - 11.5	C	A	72	A	•
20	55	235/55 R20	105W	7.3	766	245	355	267	2336	7.5	6.5 - 8.5	C	A	71	B	•
		235/50 R20	104Y	7.3	744	245	346	267	2269	7.5	6.5 - 8.5	C	A	71	B	•
	50	255/50 R20	109Y	7.3	764	265	354	289	2330	8.0	7.0 - 9.0	C	A	71	B	•
		265/50 R20	111Y	7.3	774	277	358	302	2361	8.5	7.5 - 9.5	C	A	71	B	•
	45	245/45 ZR20	103Y	7.3	728	243	340	265	2220	8.0	7.5 - 9.0	C	A	71	B	•
		255/45 R20	105Y	7.3	738	255	344	278	2251	8.5	8.0 - 9.5	C	A	71	B	•
		265/45 R20	108Y	7.3	746	266	347	290	2275	9.0	8.5 - 10.0	C	A	71	B	•
		275/45 R20	110Y	7.3	756	273	351	297	2306	9.0	8.5 - 10.5	C	A	71	B	•
40	245/40 ZR20	99Y	7.3	704	248	330	270	2147	8.5	8.0 - 9.5	C	A	71	B	•	
	255/40 ZR20	101Y	7.3	712	260	333	283	2172	9.0	8.5 - 10.0	C	A	71	B	•	
	275/40 R20	106Y	7.3	728	278	340	303	2220	9.5	9.0 - 11.0	C	A	71	B	•	
	35	235/35 ZR20	92Y	7.1	672	241	318	263	2050	8.5	8.0 - 9.5	D	A	71	B	•
		245/35 ZR20	95Y	7.2	680	248	321	270	2074	8.5	8.0 - 9.5	D	A	71	B	•
		255/35 ZR20	97Y	7.3	686	260	323	283	2092	9.0	8.5 - 10.0	C	A	71	B	•
		265/35 ZR20	99Y	7.3	694	271	326	295	2117	9.5	9.0 - 10.5	C	A	71	B	•
	30	275/35 R20	102Y	7.3	700	278	329	303	2135	9.5	9.0 - 11.0	C	A	71	B	•
285/35 ZR20		104Y	7.3	708	290	332	316	2159	10.0	9.5 - 11.0	C	A	72	A	•	
315/35 R20		110Y	7.3	728	320	340	349	2220	11.0	10.5 - 12.5	C	A	72	A	•	
245/30 ZR20		90Y	7.1	656	248	312	270	2001	8.5	8.0 - 9.0	D	A	71	B	•	
265/30 ZR20		94Y	7.3	667	272	316	295	2034	9.5	9.0 - 10.0	D	A	71	B	•	
275/30 R20		97Y	7.3	674	278	319	303	2056	9.5	9.0 - 10.0	D	A	72	B	•	
285/30 ZR20		99Y	7.3	680	290	321	316	2074	10.0	9.5 - 10.5	C	A	72	A	•	
295/30 ZR20		101Y	7.3	688	295	323	328	2098	10.5	10.0 - 11.0	C	A	72	A	•	
21	45	265/45 R21	108Y	7.3	771	266	359	290	2351	9.0	8.5 - 10.0	C	A	71	B	•
		275/45 R21	110Y	-	-	-	-	-	-	-	8.5 - 10.5	C	A	71	B	•
	40	255/40 R21	102Y	7.3	737	260	346	283	2248	9.0	8.5 - 10.0	C	A	71	B	•
		265/40 ZR21	105Y	7.3	745	271	349	295	2272	9.5	9.0 - 10.5	C	A	71	B	•
	35	295/40 R21	111Y	7.3	769	301	358	328	2345	10.5	10.0 - 11.5	C	A	72	A	•
		245/35 ZR21	96Y	-	-	-	-	-	-	-	8.0 - 9.5	D	A	71	B	•
		265/35 ZR21	101Y	-	-	-	-	-	-	-	9.0 - 10.5	C	A	71	B	•
		285/35 R21	105Y	7.3	733	290	344	316	2236	10.0	9.5 - 11.0	C	A	72	A	•
30	295/35 R21	107Y	7.3	739	301	347	328	2254	10.5	10.0 - 11.5	C	A	72	A	•	
	325/30 R21	108Y	7.3	729	331	343	361	2223	11.5	11.0 - 12.0	C	A	72	A	•	
22	40	275/40 R22	107Y	7.3	779	278	365	303	2376	9.5	9.0 - 11.0	C	A	71	B	•
		295/40 R22	112Y	-	-	-	-	-	-	-	10.0 - 11.5	C	A	72	A	•
	35	265/35 R22	102Y	7.3	745	271	352	295	2272	9.5	9.0 - 10.5	C	A	71	B	•
		285/35 ZR22	106Y	7.3	759	290	357	316	2315	10.0	9.5 - 11.0	C	A	72	A	•



PROXES SPORT 2





PROXES Comfort



The **PROXES Comfort** is a summer tire for passenger cars and SUVs with an asymmetrical tread design.

The tire impresses with its high driving stability in corners as well as good handling and very good grip performance in wet conditions.



Tire Videos
PROXES Comfort

16 - 19 inch. Speed index V and W.



Aspect Ratio 45 - 70. Width 205mm - 235mm.

Tread Pattern Features



Asymmetrical tread pattern design with improved footprint.

Wide circumferential tread grooves with small lateral shoulder grooves for optimised water drainage.

Tight grooves in the tire shoulder drain water quickly and improve wet grip performance.

PROXES COMFORT

RIM DIA.	ASPECT RATIO	TIRE SIZE	LOAD INDEX SPEED SYMBOL	TREAD DEPTH (mm)	INFLATED DIMENSION		LOADED DIMENSION		ROLLING CIRCUMFERENCE (mm)	MEASURING RIM WIDTH (Inch)	ALTERNATE RIM (Inch)	RRC	Wet	Noise db	ABC Noise	Rim Protector
					OVERALL DIA. (mm)	OVERALL WIDTH (mm)	STATIC RADIUS (mm)	STATIC WIDTH (mm)								
16	70	215/70 R16	100V	8.0	708	221	321	241	2159	6.5	5.5 - 7.0	C	A	70	B	-
	65	205/65 R16	95W	9.6	672	209	307	228	2050	6.0	5.5 - 7.5	D	A	70	B	-
		215/65 R16	102V	7.9	686	221	312	241	2092	6.5	6.0 - 7.5	C	A	70	B	-
60	215/60 R16	99V	7.8	664	221	304	241	2025	6.5	6.0 - 7.5	-	-	70	B	•	
17	65	215/65 R17	99V	7.9	712	221	325	241	2172	6.5	6.0 - 7.5	C	A	70	B	-
		225/65 R17	106V	8.0	724	228	330	249	2208	6.5	6.0 - 8.0	C	A	70	B	-
	60	215/60 R17	100V	7.8	690	221	317	241	2105	6.5	6.0 - 7.5	C	A	70	B	-
225/60 R17		103V	7.9	702	228	321	249	2141	6.5	6.0 - 8.0	C	A	70	B	-	
55	225/55 R17	101W	7.8	680	233	313	254	2074	7.0	6.0 - 8.0	C	A	70	B	-	
	235/55 R17	99V	7.9	690	245	317	267	2105	7.5	6.5 - 8.5	C	A	71	B	-	
18	65	235/65 R18	110W	8.1	763	240	348	262	2327	7.0	6.5 - 8.5	C	A	71	B	-
		225/60 R18	104W	7.9	727	228	334	249	2217	6.5	6.0 - 8.0	C	A	70	B	-
	60	235/60 R18	107W	8.0	739	240	338	262	2254	7.0	6.5 - 8.5	C	A	71	B	-
55		215/55 R18	99V	7.7	693	226	321	246	2114	7.0	6.0 - 7.5	C	A	70	B	-
	225/55 R18	102W	7.8	705	233	325	254	2150	7.0	6.0 - 8.0	C	A	70	B	-	
235/55 R18		100V	7.9	715	245	329	267	2181	7.5	6.5 - 8.5	C	A	71	B	-	
50	215/50 R18	92W	7.6	673	226	313	246	2053	7.0	6.0 - 7.5	D	A	70	B	•	
	215/50 R18	92V	7.6	673	226	313	246	2053	7.0	6.0 - 7.5	D	A	70	B	•	
	225/50 R18	95W	7.7	683	233	317	254	2083	7.0	6.0 - 8.0	D	A	70	B	•	
19	55	225/55 R19	99V	7.8	731	233	338	254	2230	7.0	6.0 - 8.0	C	A	70	B	-
		235/50 R19	99W	7.8	719	245	333	267	2193	7.5	6.5 - 8.5	C	A	71	B	•
	45	225/45 R19	96W	7.6	685	225	320	245	2089	7.5	7.0 - 8.5	-	-	70	B	•
235/45 R19		99W	7.7	695	236	324	257	2120	8.0	7.5 - 9.0	C	A	71	B	•	





PROXES TR1



The **PROXES TR1** has a directional tread pattern design.

Wide circumferential tread and shoulder grooves direct water away quickly and improve both handling and grip on wet and dry roads.



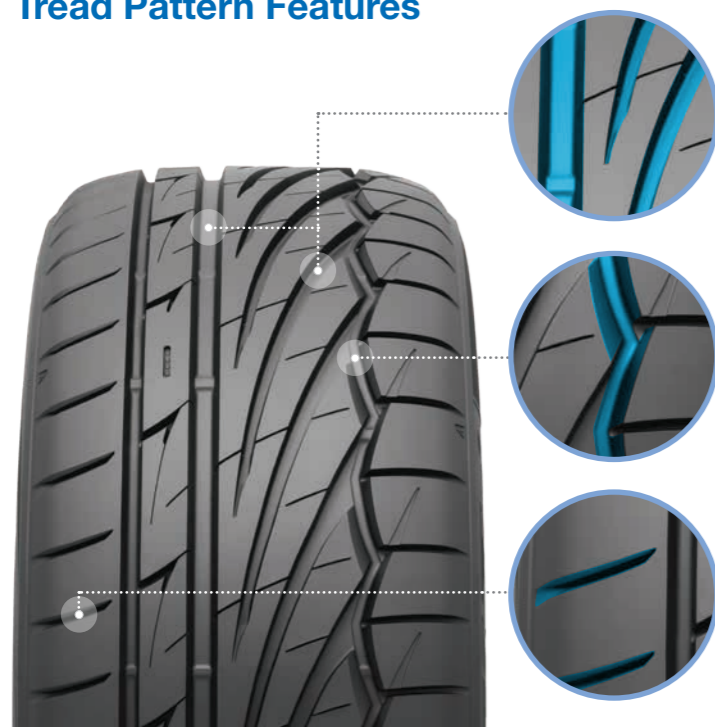
Tire Videos
PROXES TR1

15 - 20 inch. Speed index V, W and Y.



Aspect Ratio 35 - 60. Width 165mm - 265mm.

Tread Pattern Features



Directional tread design.

Zigzag and "dynamic taper" design grooves drain water and improve wet grip performance.

Wide shoulder grooves allow for a good lateral water drainage.

PROXES TR1

RIM DIA.	ASPECT RATIO	TIRE SIZE	LOAD INDEX	SPEED SYMBOL	TREAD DEPTH (mm)	INFLATED DIMENSION		LOADED DIMENSION		ROLLING CIRCUMFERENCE (mm)	MEASURING RIM WIDTH (Inch)	ALTERNATE RIM (Inch)	RRC	Wet	Noise db	ABC Noise	Rim Protector
						OVERALL DIA. (mm)	OVERALL WIDTH (mm)	STATIC RADIUS (mm)	STATIC WIDTH (mm)								
15	60	195/60 R15	88V	8.6	615	201	282	219	1876	6.0	5.5 - 7.0	D	B	70	B	-	
		55	185/55 R15	82V	8.4	585	194	270	211	1784	6.0	5.0 - 6.5	D	B	70	B	•
			195/55 R15	85V	8.5	595	201	274	219	1815	6.0	5.5 - 7.0	D	B	70	B	•
	50	165/50 R15	76V	7.8	547	170	255	185	1668	5.0	4.5 - 6.0	D	B	70	B	•	
		175/50 R15	75V	7.9	557	182	259	198	1699	5.5	5.0 - 6.0	D	B	70	B	•	
		195/50 R15	82V	8.4	577	201	267	219	1760	6.0	5.5 - 7.5	D	B	70	B	•	
		205/50 R15	89V	8.5	587	214	271	233	1790	6.5	5.5 - 7.5	D	B	70	B	•	
		225/50 R15	91V	8.7	607	233	279	254	1851	7.0	6.0 - 8.0	D	B	70	B	•	
		195/45 R15	78V	8.0	557	195	259	213	1699	6.5	6.0 - 7.5	D	B	70	B	•	
	45	205/45 R15	81V	8.4	565	206	262	225	1723	7.0	6.5 - 7.5	D	B	70	B	•	
		215/45 R15	85V	8.5	575	213	266	232	1754	7.0	7.0 - 8.0	D	B	70	B	•	
		185/55 R16	83V	8.4	610	194	283	211	1861	6.0	5.0 - 6.5	D	B	70	B	•	
16	55	195/55 R16	91V	8.5	620	201	287	219	1891	6.0	5.5 - 7.0	D	B	70	B	•	
		205/55 R16	91W	8.3	632	214	291	233	1928	6.5	5.5 - 7.5	D	B	70	B	•	
		225/55 R16	99W	8.5	654	233	300	254	1995	7.0	6.0 - 8.0	D	B	70	B	•	
	50	195/50 R16	84V	8.4	602	201	279	219	1836	6.0	5.5 - 7.5	D	B	70	B	•	
		205/50 R16	87W	8.2	612	214	283	233	1867	6.5	5.5 - 7.5	D	B	70	B	•	
		195/45 R16	84W	8.0	582	195	272	213	1775	6.5	6.0 - 7.5	D	B	70	B	•	
		205/45 R16	87W	8.1	590	206	275	225	1800	7.0	6.5 - 7.5	D	B	70	B	•	
	45	225/45 R16	93W	8.0	608	225	282	245	1854	7.5	7.0 - 8.5	D	B	70	B	•	
		245/45 R16	94W	8.5	626	243	289	265	1909	8.0	7.5 - 9.0	D	B	70	B	•	
	40	215/40 R16	86W	8.1	578	218	270	238	1763	7.5	7.0 - 8.5	D	B	70	B	•	
	35	245/35 R16	86W	8.3	578	248	270	270	1763	8.5	8.0 - 9.5	D	B	70	B	•	
	17	55	205/55 R17	95V	8.6	658	214	304	233	2007	6.5	5.5 - 7.5	D	B	70	B	•
215/55 R17			94V	8.7	668	226	308	246	2037	7.0	6.0 - 7.5	D	B	70	B	•	
225/55 R17			97W	8.5	680	233	313	254	2074	7.0	6.0 - 8.0	D	B	70	B	•	
50		235/55 R17	103W	8.6	690	245	317	267	2105	7.5	6.5 - 8.5	D	B	70	B	•	
		205/50 R17	93W	8.2	638	214	296	233	1946	6.5	5.5 - 7.5	D	B	70	B	•	
		215/50 R17	91W	8.3	648	226	300	246	1976	7.0	6.0 - 7.5	D	B	70	B	•	
45		225/50 R17	94W	8.4	658	233	304	254	2007	7.0	6.0 - 8.0	D	B	70	B	•	
		195/45 R17	85W	8.0	608	195	285	213	1854	6.5	6.0 - 7.5	D	B	70	B	•	
		215/45 R17	91W	8.2	626	213	292	232	1909	7.0	7.0 - 8.0	D	B	70	B	•	
		225/45 R17	94W	8.3	634	225	295	245	1934	7.5	7.0 - 8.5	D	B	70	B	•	
		225/45 R17	94Y	7.7	634	225	295	245	1934	7.5	7.0 - 8.5	D	B	70	B	•	
		235/45 R17	97W	8.4	644	236	299	257	1964	8.0	7.5 - 9.0	D	B	70	B	•	
40	245/45 R17	99W	8.5	652	243	302	265	1989	8.0	7.5 - 9.0	D	B	70	B	•		
	205/40 R17	84W	8.0	596	212	280	231	1818	7.5	7.0 - 8.0	D	B	70	B	•		
	215/40 R17	87W	8.1	604	218	283	238	1842	7.5	7.0 - 8.5	D	B	70	B	•		
35	245/35 R17	87W	8.3	604	248	283	270	1842	8.5	8.0 - 9.5	D	B	70	B	•		
18	50	235/50 R18	101W	8.5	693	245	321	267	2114	7.5	6.5 - 8.5	D	B	70	B	•	
		215/45 R18	93W	8.2	651	213	304	232	1986	7.0	7.0 - 8.0	D	B	70	B	•	
		225/45 R18	95W	8.3	659	225	307	245	2010	7.5	7.0 - 8.5	D	B	70	B	•	
	45	235/45 R18	98W	8.4	669	236	311	257	2040	8.0	7.5 - 9.0	D	B	70	B	•	
		245/45 R18	100W	8.5	677	243	314	265	2065	8.0	7.5 - 9.0	D	B	70	B	•	
		255/45 R18	99W	8.6	687	255	318	278	2095	8.5	8.0 - 9.5	D	B	72	B	•	
	40	215/40 R18	89W	8.1	629	218	296	238	1918	7.5	7.0 - 8.5	D	B	70	B	•	
		225/40 R18	92Y	7.9	637	230	299	251	1943	8.0	7.5 - 9.0	D	B	70	B	•	
		235/40 R18	95W	8.3	645	241	302	263	1967	8.5	8.0 - 9.5	D	B	70	B	•	
		245/40 R18	97W	8.4	653	248	305	270	1992	8.5	8.0 - 9.5	D	B	70	B	•	
	35	215/35 R18	84W	8.0	607	218	287	238	1851	7.5	7.0 - 8.5	D	B	70	B	•	
		255/35 R18	94W	8.4	635	260	298	283	1937	9.0	8.5 - 10.0	D	B	72	B	•	
265/35 R18		97W	8.5	643	271	301	295	1961	9.5	9.0 - 10.5	D	B	72	B	•		
19	225/35 R19	88W	8.1	641	230	303	251	1955	8.0	7.5 - 9.0	D	B	70	B	•		
	235/35 R19	91W	8.2	647	241	305	263	1973	8.5	8.0 - 9.5	D	B	70	B	•		
	245/35 R19	93W	8.3	655	248	309	270	1998	8.5	8.0 - 9.5	D	B	70	B	•		
20	235/35 R20	92W	8.2	672	241	318	263	2050	8.5	8.0 - 9.5	D	B	70	B	•		
	245/35 R20	95W	8.3	680	248	321	270	2074	8.5	8.0 - 9.5	D	B	70	B	•		





PROXES Sport



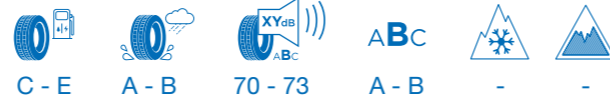
The **PROXES Sport** features an asymmetrical tread pattern and a specialised Nano Balance compound, enhancing both handling and grip.

Wide circumferential and shoulder grooves efficiently channel water away, improving traction and control on both wet and dry surfaces.



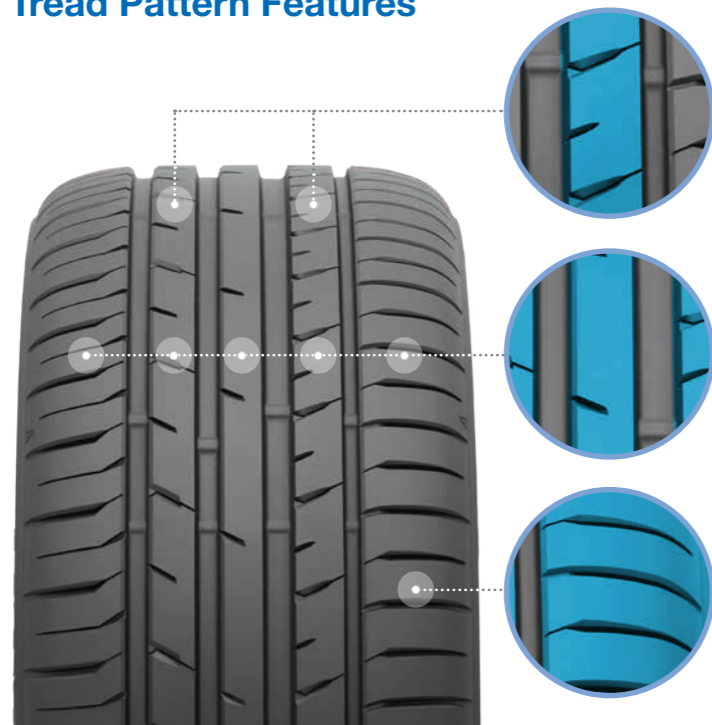
Tire Videos
PROXES Sport

17 - 21 inch. Speed index W and Y.



Aspect Ratio 25 - 55. Width 205mm - 325mm.

Tread Pattern Features



Asymmetrical tread design with transverse grooves in the midrib provide excellent traction.

The tread block design improves the contact patch of the tires as well as the handling and braking performance.

Wide shoulder grooves allow good lateral water drainage.

PROXES SPORT

RIM DIA.	ASPECT RATIO	TIRE SIZE	LOAD INDEX SPEED SYMBOL	TREAD DEPTH (mm)	INFLATED DIMENSION		LOADED DIMENSION		ROLLING CIRCUMFERENCE (mm)	MEASURING RIM WIDTH (Inch)	ALTERNATE RIM (Inch)	RRC	Wet	Noise db	ABC Noise	Rim Protector
					OVERALL DIA. (mm)	OVERALL WIDTH (mm)	STATIC RADIUS (mm)	STATIC WIDTH (mm)								
17	55	235/55ZR17	99Y	7.4	690	245	317	267	2105	7.5	6.5 - 8.5	D	B	71	B	•
	50	235/50ZR17	96Y	7.7	668	245	308	267	2037	7.5	6.5 - 8.5	D	A	70	B	•
	45	255/45ZR17	98Y	7.4	662	255	306	278	2019	8.5	8.0 - 9.5	C	A	72	B	•
	40	205/40ZR17	84W	7.5	596	212	280	231	1818	7.5	7.0 - 8.0	D	A	70	B	•
		235/40ZR17	94Y	7.5	620	241	289	263	1891	8.5	8.0 - 9.5	D	A	70	B	•
18	40	255/40ZR17	98Y	7.7	636	260	296	283	1940	9.0	8.5 - 10.0	C	A	73	B	•
		265/40ZR18	101Y	7.6	669	271	311	295	2040	9.5	9.0 - 10.5	C	A	72	B	•
	35	205/35ZR18	81Y	7.1	601	212	285	231	1833	7.5	7.5	D	A	71	B	•
		285/35ZR18	101Y	7.6	657	290	307	316	2004	10.0	9.5 - 11.0	C	A	72	A	•
19	30	235/30ZR18	85Y	7.3	599	240	284	262	1827	8.5	8.5	D	A	71	B	•
	35	295/35ZR19	104Y	7.6	689	301	322	328	2101	10.5	10.0 - 11.5	C	A	72	A	•
		285/30ZR19	98Y	7.5	655	290	309	316	1998	10.0	9.5 - 10.5	C	A	72	A	•
	30	295/30ZR19	100Y	7.5	661	301	311	328	2016	10.5	10.0 - 11.0	C	A	72	A	•
		325/30ZR19	105Y	7.1	679	331	318	361	2071	11.5	11.0 - 12.0	C	A	72	A	•
20	35	225/35ZR20	90Y	7.3	666	230	316	251	2031	8.0	7.5 - 9.0	D	A	70	B	•
		295/35ZR20	105Y	7.6	714	301	334	328	2178	10.5	10.0 - 11.5	C	A	72	A	•
	30	235/30ZR20	88Y	7.1	650	241	309	263	1983	8.5	8.5	D	A	70	B	•
		255/30ZR20	92Y	7.3	662	260	314	283	2019	9.0	8.5 - 9.5	D	A	72	B	•
	25	285/25ZR20	93Y	7.6	650	295	309	322	1983	10.5	10.5	D	A	72	A	•
295/25ZR20		95Y	7.6	656	301	312	328	2001	10.5	10.0 - 11.0	D	A	72	A	•	
21	35	305/25ZR20	97Y	7.4	660	313	313	341	2013	11.0	10.5 - 11.5	D	A	72	A	•
		275/35ZR21	103Y	7.8	725	278	341	303	2211	9.5	9.0 - 11.0	D	A	72	B	•



PROXES SPORT



TOYO 310

Reintroduced for cars first registered before October 1 1990, TOYO 310 offers safe motoring and good mileage for classic cars.

14 - 15 inch. Speed indices S.

Toyo 310 is exempt from regulation EC 1222/2009 and UN/ECE-R117-02 as the tire is designed to be fitted only to vehicles first registered before 1 October 1990.

RIM DIA.	ASPECT RATIO	TIRE SIZE	LOAD INDEX SPEED SYMBOL	TREAD DEPTH (mm)	INFLATED DIMENSION		LOADED DIMENSION		ROLLING CIRCUMFERENCE (mm)	MEASURING RIM WIDTH (inch)	ALTERNATE RIM (inch)	RRC	Wet	Noise db	ABC Noise	Rim Protector
					OVERALL DIA. (mm)	OVERALL WIDTH (mm)	STATIC RADIUS (mm)	STATIC WIDTH (mm)								
14	80	155 R14	80S	8.0	605	156	275	175	1847	4.5	4.5	-	-	-	-	-
		135 R15	72S	6.7	599	136	275	152	1828	4.0	4.0	-	-	-	-	-
15	80	155 R15	82S	8.0	631	156	289	175	1923	4.5	4.5	-	-	-	-	-





WINTER CAR TIRES

OBSERVE S944

SNOWPROX S954

SNOWPROX S943

OBSERVE GSi-6

OBSERVE ICE-FREEZER

OBSERVE G3-ICE

OBSERVE S944



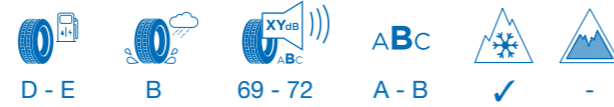
The **OBSERVE S944** is a winter tire with a directional tread pattern.

It was designed using the Nano-Balance-Technology. The resulting tire construction ensures good grip on wet and wintry roads.



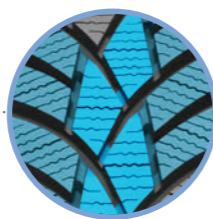
Tire Videos
Observe S944

16 - 19 inch. Speed index T, H, V and W.



Aspect Ratio 40 - 65. Width 185mm - 235mm.

Tread Pattern Features



Stable interconnected centre blocks provide excellent road contact.



The tread blocks feature sipes that run in various directions, allowing a quick water drainage and maintaining optimal road contact.



Directional tread pattern with interconnected deep grooves quickly channel water away and prevent aquaplaning.

OBSERVE S944

RIM DIA.	ASPECT RATIO	TIRE SIZE	LOAD INDEX SPEED SYMBOL	TREAD DEPTH (mm)	INFLATED DIMENSION		LOADED DIMENSION		ROLLING CIRCUMFERENCE (mm)	MEASURING RIM WIDTH (Inch)	ALTERNATE RIM (Inch)	RRC	Wet	Noise db	ABC Noise	Rim Protector
					OVERALL DIA. (mm)	OVERALL WIDTH (mm)	STATIC RADIUS (mm)	STATIC WIDTH (mm)								
65		205/65 R16	95V	8.7	672	209	307	228	2050	6.0	5.5 - 7.5	D	B	71	B	-
		185/60 R16	86H	8.4	628	189	290	206	1915	5.5	5.0 - 6.5	E	B	70	B	-
		205/60 R16	96H	8.6	652	209	299	228	1989	6.0	5.5 - 7.5	D	B	71	B	-
60		215/60 R16	99H	8.7	664	221	304	241	2025	6.5	6.0 - 7.5	D	B	71	B	-
		195/55 R16	91H	8.4	620	201	287	219	1891	6.0	5.5 - 7.0	D	B	71	B	-
		205/55 R16	91H	8.5	632	214	291	233	1928	6.5	5.5 - 7.5	D	B	69	A	-
16	55	205/55 R16	94V	8.5	632	214	291	233	1928	6.5	5.5 - 7.5	D	B	71	B	-
		215/55 R16	97H	8.6	642	226	295	246	1958	7.0	6.0 - 7.5	D	B	71	B	-
		225/55 R16	99V	8.7	654	233	300	254	1995	7.0	6.0 - 8.0	D	B	71	B	-
50		185/50 R16	81H	7.7	592	194	276	211	1806	6.0	5.0 - 6.5	E	B	70	B	•
		195/50 R16	88H	8.2	602	201	279	219	1836	6.0	5.5 - 7.0	D	B	71	B	•
45		195/45 R16	84H	7.9	582	195	272	213	1775	6.5	6.0 - 7.5	E	B	71	B	•
		215/45 R16	90H	8.2	600	213	279	232	1830	7.0	7.0 - 8.0	E	B	71	B	•
40		215/40 R16	86H	8.1	578	218	270	238	1763	7.5	7.0 - 8.0	E	B	71	B	•
55		205/55 R17	95V	8.5	658	214	304	233	2007	6.5	5.5 - 7.5	D	B	71	B	-
		215/55 R17	98V	8.6	668	226	308	246	2037	7.0	6.0 - 7.5	D	B	71	B	-
		225/55 R17	101V	8.7	680	233	313	254	2074	7.0	6.0 - 8.0	E	B	71	B	-
17	50	235/55 R17	103V	8.8	690	245	317	267	2105	7.5	6.5 - 8.5	D	B	72	B	-
		205/50 R17	93V	8.3	368	214	296	233	1946	6.5	5.5 - 7.5	D	B	71	B	•
		215/50 R17	95V	8.4	648	226	300	246	1976	7.0	6.0 - 7.5	D	B	71	B	•
45		225/50 R17	98V	8.5	658	233	304	254	2007	7.0	6.0 - 8.0	D	B	71	B	•
		205/45 R17	88H	8.1	616	206	288	225	1879	7.0	6.5 - 7.5	E	B	71	B	•
		215/45 R17	91H	8.2	626	213	292	232	1909	7.0	7.0 - 8.0	E	B	71	B	•
40		225/45 R17	94V	8.3	634	225	295	245	1934	7.5	7.0 - 8.5	D	B	71	B	•
		215/40 R17	87V	8.1	604	218	283	238	1842	7.5	7.0 - 8.0	E	B	71	B	•
		215/50 R18	92V	8.4	673	226	313	246	2053	7.0	6.0 - 7.5	D	B	71	B	•
18	45	215/45 R18	93V	8.2	651	213	304	232	1986	7.0	7.0 - 8.0	D	B	71	B	•
		225/45 R18	95V	8.3	659	225	307	245	2010	7.5	7.0 - 8.5	D	B	71	B	•
		205/40 R18	86V	8	621	212	292	231	1894	7.5	6.5 - 7.5	E	B	71	B	•
40		215/40 R18	89V	8.1	629	218	296	238	1918	7.5	7.0 - 8.0	E	B	71	B	•
		225/40 R18	92W	8.2	637	230	299	251	1943	8.0	7.0 - 8.5	D	B	71	B	•
		215/50 R19	93T	8.4	699	226	326	246	2132	7.0	6.0 - 7.5	D	B	71	B	•
19	45	225/45 R19	96W	8.3	685	225	320	245	2089	7.5	7.0 - 8.5	D	B	71	B	•
		235/45 R19	99V	8.4	695	236	324	257	2120	8.0	7.5 - 9.0	D	B	72	B	•
		225/40 R19	93V	8.2	663	230	312	251	2022	8.0	7.0 - 8.5	E	B	71	B	•



SNOWPROX S954



The **SNOWPROX S954** is a winter tire featuring an asymmetric tread pattern.

Its design, combined with an optimised rubber compound, provides excellent grip on wet and icy roads.



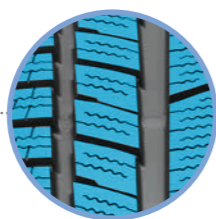
Tire Videos
Snowprox S954

16 - 21 inch. Speed index H, V and W.



Aspect Ratio 30 - 55. Width 185mm - 275mm.

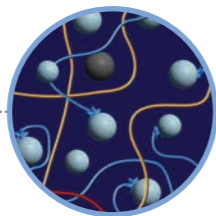
Tread Pattern Features



Tightly spaced tread blocks with many sipes and wide, circumferential tread grooves for optimum water drainage.



Asymmetrical tread design.



Silica tread compound for optimised rolling resistance and good grip.

SNOWPROX S954

RIM DIA.	ASPECT RATIO	TIRE SIZE	LOAD INDEX SPEED SYMBOL	TREAD DEPTH (mm)	INFLATED DIMENSION		LOADED DIMENSION		ROLLING CIRCUMFERENCE (mm)	MEASURING RIM WIDTH (Inch)	ALTERNATE RIM (Inch)	RRC	Wet	Noise db	ABC Noise	Rim Protector
					OVERALL DIA. (mm)	OVERALL WIDTH (mm)	STATIC RADIUS (mm)	STATIC WIDTH (mm)								
16	55	225/55 R16	95H	8.7	654	233	300	254	1995	7.0	6.0 - 8.0	D	B	71	B	•
	50	185/50 R16	81H	8.3	592	194	276	211	1806	6.0	5.0 - 6.5	D	B	70	B	•
		195/50 R16	88H	8.4	602	201	279	219	1836	6.0	5.5 - 7.0	D	C	71	B	•
		205/50 R16	91H	8.5	612	214	283	233	1867	6.5	5.5 - 7.5	D	C	71	B	•
	45	225/50 R16	92H	8.7	632	233	291	254	1928	7.0	6.0 - 8.0	D	C	71	B	•
		195/45 R16	84H	8.4	582	195	272	213	1775	6.5	6.0 - 7.5	D	C	71	B	•
205/45 R16		87H	8.5	590	206	275	225	1800	7.0	6.5 - 7.5	D	C	71	B	•	
17	45	215/45 R16	90H	8.6	600	213	279	232	1830	7.0	7.0 - 8.0	D	C	71	B	•
	50	235/50 R17	96V	8.8	668	245	308	267	2037	7.5	6.5 - 8.5	D	B	71	B	•
		235/45 R17	97V	8.8	644	236	299	257	1964	8.0	7.5 - 9.0	D	B	71	B	•
40	245/45 R17	99V	8.9	652	243	302	265	1989	8.0	7.5 - 9.0	D	B	71	B	•	
18	40	255/40 R17	98V	9.0	636	260	296	283	1940	9.0	8.5 - 10.0	D	C	72	B	•
	45	235/45 R18	98V	8.8	669	236	311	257	2040	8.0	7.5 - 9.0	D	B	71	B	•
		245/45 R18	100V	8.9	677	243	314	265	2065	8.0	7.5 - 9.0	D	B	71	B	•
		255/45 R18	99V	9	687	255	318	278	2095	8.5	8.0 - 9.5	D	C	72	B	•
	40	225/40 R18	92V	8.7	637	230	299	251	1943	8.0	7.5 - 9.0	D	B	71	B	•
		225/40 R18	92W	8.7	637	230	299	251	1943	8.0	7.5 - 9.0	D	B	71	B	•
235/40 R18		95V	8.8	645	241	302	263	1967	8.5	8.0 - 9.5	D	B	71	B	•	
35	245/40 R18	97V	8.9	653	248	305	270	1992	8.5	8.0 - 9.5	D	B	71	B	•	
	245/35 R18	92V	8.9	629	248	296	270	1918	8.5	8.0 - 9.5	D	C	71	B	•	
	255/35 R18	94W	9.0	635	260	298	283	1937	9.0	8.5 - 10.0	D	C	72	B	•	
19	40	235/40 R19	96W	8.8	671	241	315	263	2047	8.5	8.0 - 9.5	D	B	71	B	•
	35	245/40 R19	98W	8.9	679	248	318	270	2071	8.5	8.0 - 9.5	D	B	71	B	•
		255/40 R19	100V	9.0	687	260	321	283	2095	9.0	8.5 - 10.0	D	C	72	B	•
		225/35 R19	88W	8.7	641	230	303	251	1955	8.0	7.5 - 9.0	E	B	71	B	•
	30	235/35 R19	91W	8.8	647	241	305	263	1973	8.5	8.0 - 9.5	E	C	72	B	•
		255/35 R19	96W	9	661	260	311	283	2016	9.0	8.5 - 10.0	D	C	72	B	•
275/35 R19		100V	9.2	675	278	316	303	2059	9.5	9.0 - 11.0	D	C	72	B	•	
20	30	255/30 R19	91W	9.0	637	260	302	283	1943	9.0	8.5 - 9.5	E	C	72	B	•
	55	195/55 R20	95H	8.4	722	201	337	219	2202	6.0	5.5 - 7.0	D	C	71	B	•
		245/40 R20	99W	8.9	704	248	330	270	2147	8.5	8.0 - 9.5	D	C	71	B	•
		255/40 R20	101W	9	712	260	334	283	2172	9.0	8.5 - 10.0	D	C	72	B	•
	35	265/40 R20	104V	9.1	720	271	337	295	2196	9.5	9.0 - 10.5	D	C	72	B	•
		245/35 R20	95V	8.9	680	248	321	270	2074	8.5	8.0 - 9.5	D	C	71	B	•
255/35 R20		97W	9.0	686	260	323	283	2092	9.0	8.5 - 10.0	D	C	72	B	•	
30	255/30 R20	92W	9.0	662	260	314	283	2019	9.0	8.5 - 9.5	E	C	72	B	•	
	265/30 R20	94W	9.1	668	271	316	295	2037	9.5	9.0 - 10.0	D	C	72	B	•	
21	35	275/35 R21	103V	9.2	725	278	341	303	2211	9.5	9.0 - 11.0	D	C	72	B	•





SNOWPROX S943



SNOWPROX S943 is a winter passenger car tire for small and medium-sized vehicles. The optimised tread pattern and rubber compound deliver reliable grip on wet and wintry roads.



Tire Videos
Snowprox S943

16 inch. Speed index H.

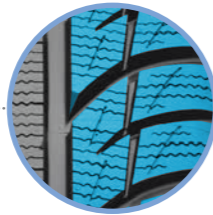


Aspect Ratio 55 - 60. Width 175mm - 235mm.

Tread Pattern Features



The tread blocks are interspersed with many small sipes that quickly drain the water into the circumferential tread grooves. The tire therefore offers good traction on snow and wet surfaces.



Wide shoulder blocks offer an extensive contact area, delivering excellent road grip and enhanced braking performance.



Two wide circumferential tread grooves quickly drain the water from the small tread block sipes, thereby improving grip on wet and wintry roads.

SNOWPROX S943

RIM DIA.	ASPECT RATIO	TIRE SIZE	LOAD INDEX SPEED SYMBOL	TREAD DEPTH (mm)	INFLATED DIMENSION		LOADED DIMENSION		ROLLING CIRCUMFERENCE (mm)	MEASURING RIM WIDTH (Inch)	ALTERNATE RIM (Inch)	RRC	Wet	Noise db	ABC Noise	Rim Protector
					OVERALL DIA. (mm)	OVERALL WIDTH (mm)	STATIC RADIUS (mm)	STATIC WIDTH (mm)								
16	60	175/60 R16	82H	8.8	616	177	285	193	1879	5.0	5.0 - 6.0	D	C	70	B	-
		195/60 R16	93H	9.5	640	201	294	219	1952	6.0	5.5 - 7.0	D	C	70	B	-
		235/60 R16	104H	9.8	688	240	313	262	2098	7.0	6.5 - 8.5	C	C	70	B	-
	55	185/55 R16	87H	8.7	610	194	283	211	1861	6.0	5.0 - 6.5	D	C	70	B	-



SNOWPROX S943

OBSERVE GSi-6



The **OBSERVE GSi-6** tire is a passenger car and SUV winter tire that has been specially developed for the Nordic regions, where the extreme winter temperatures create icy and snow-covered roads. The special rubber compound of the GSi-6 tire has been precisely matched to these extreme conditions.

Small pieces of walnut shell are mixed into the tire's rubber compound to provide additional grip on the road surface.



Tire Videos
Observe GSi-6

16 - 22 inch. Speed index H and V.



Aspect Ratio 35 - 70. Width 185mm - 275mm.

Tread Pattern Features



A circumferential, centre tread block with fine sipes ensures good traction on snow with edge effect.



The 360° sipes, which give the tread block a special honeycomb structure with small, transverse grooves, improve grip on snow and icy roads.



A wave-shaped sipe runs along the centre tread blocks channeling water and improves road contact in winter conditions.

OBSERVE GSi-6

RIM DIA.	ASPECT RATIO	TIRE SIZE	LOAD INDEX	SPEED SYMBOL	TREAD DEPTH (mm)	INFLATED DIMENSION		LOADED DIMENSION		ROLLING CIRCUMFERENCE (mm)	MEASURING RIM WIDTH (Inch)	ALTERNATE RIM (Inch)	RRC	Wet	Noise db	ABC Noise	Rim Protector
						OVERALL DIA. (mm)	OVERALL WIDTH (mm)	STATIC RADIUS (mm)	STATIC WIDTH (mm)								
70		205/70 R16	97H		9.1	694	209	315	228	2117	6.0	5.0 - 7.0	E	E	70	B	-
65		205/65 R16	95H		9.0	672	209	307	228	2050	6.0	5.5 - 7.5	E	E	71	B	-
60		185/60 R16	86H		8.7	628	189	290	206	1915	5.5	5.0 - 6.5	E	E	70	B	-
		195/60 R16	89H		8.8	640	201	294	219	1952	6.0	5.5 - 7.0	E	E	70	B	-
		205/60 R16	92H		8.9	652	209	299	228	1989	6.0	5.5 - 7.5	E	E	70	B	-
		205/60 R16	96H		8.9	652	209	299	228	1989	6.0	5.5 - 7.5	E	E	70	B	-
		215/60 R16	95H		9.0	664	221	304	241	2025	6.5	6.0 - 7.5	E	E	70	B	-
16		225/60 R16	98H		9.7	676	228	308	249	2062	6.5	6.0 - 8.0	E	E	70	B	-
	55	185/55 R16	83H		8.6	610	194	283	211	1861	6.0	5.0 - 6.5	E	E	70	B	•
		195/55 R16	87H		8.6	620	201	287	219	1891	6.0	5.5 - 7.0	E	E	71	B	•
205/55 R16		94H		8.6	632	214	291	233	1928	6.5	5.5 - 7.5	E	E	71	B	•	
	215/55 R16	97H		8.9	642	226	295	246	1958	7.0	6.0 - 7.5	E	E	71	B	•	
50		195/50 R16	84H		8.6	602	201	279	219	1836	6.0	5.5 - 7.0	E	E	71	B	•
17	60	195/60 R17	90H		8.8	666	201	307	219	2031	6.0	5.5 - 7.0	E	E	70	B	-
	55	215/55 R17	98H		8.9	668	226	308	246	2037	7.0	6.0 - 7.5	E	E	71	B	•
		225/55 R17	97H		9.0	680	233	313	254	2074	7.0	6.0 - 8.0	E	E	71	B	•
	50	205/50 R17	93H		8.7	638	214	296	233	1946	6.5	5.5 - 7.5	E	E	71	B	•
		215/50 R17	95H		8.8	648	226	300	246	1976	7.0	6.0 - 7.5	E	E	71	B	•
		225/50 R17	94V		8.7	658	233	304	254	2007	7.0	6.0 - 8.0	E	E	71	B	•
	45	215/45 R17	91H		8.7	626	213	292	232	1909	7.0	7.0 - 8.0	E	E	71	B	•
		225/45 R17	94H		8.8	634	225	295	245	1934	7.5	7.0 - 8.5	E	E	71	B	•
		235/45 R17	97H		8.8	644	236	299	257	1964	8.0	7.5 - 9.0	E	E	71	B	•
		245/45 R17	99H		9.0	652	243	302	265	1989	8.0	7.5 - 9.0	E	E	71	B	•
18	60	195/60 R18	96H		8.8	691	201	320	219	2108	6.0	5.5 - 7.0	E	E	70	B	-
	50	215/50 R18	92H		8.8	673	226	313	246	2053	7.0	6.0 - 7.5	E	E	71	B	•
		225/50 R18	99V		8.6	683	233	317	254	2083	7.0	6.0 - 8.0	E	E	71	B	•
		245/50 R18	104V		8.9	703	253	324	276	2144	7.5	7.0 - 8.5	E	E	71	B	•
	45	215/45 R18	93H		8.7	651	213	304	232	1986	7.0	7.0 - 8.0	E	E	71	B	•
		225/45 R18	95V		8.6	659	225	307	245	2010	7.5	7.0 - 8.5	E	E	71	B	•
		235/45 R18	98V		8.6	669	236	311	257	2040	8.0	7.5 - 9.0	E	E	71	B	•
		245/45 R18	100V		8.7	677	243	314	265	2065	8.0	7.5 - 9.0	E	E	71	B	•
	40	225/40 R18	92V		8.4	637	230	299	251	1943	8.0	7.5 - 9.0	E	E	71	B	•
		235/40 R18	95V		8.6	645	241	302	263	1967	8.5	8.0 - 9.5	E	E	71	B	•
		245/40 R18	97V		8.6	653	248	305	270	1992	8.5	8.0 - 9.5	E	E	71	B	•
		255/40 R18	99V		8.8	661	260	308	283	2016	9.0	8.5 - 10.0	E	E	71	B	•
19	50	195/50 R19	88V		8.4	679	201	318	219	2071	6.0	5.5 - 7.0	E	E	71	B	•
		225/45 R19	96H		8.8	685	225	320	245	2089	7.5	7.0 - 8.5	E	E	71	B	•
		225/45 R19	96V		8.6	685	225	320	245	2089	7.5	7.0 - 8.5	E	E	71	B	•
	45	235/45 R19	95V		8.7	695	236	324	257	2120	8.0	7.5 - 9.0	E	E	71	B	•
		245/45 R19	102V		8.8	703	243	327	265	2144	8.0	7.5 - 9.0	E	E	71	B	•
		265/45 R19	105H		9.8	721	266	334	290	2199	9.0	8.5 - 10.0	E	E	72	B	•
	40	225/40 R19	93V		8.5	663	230	312	251	2022	8.0	7.5 - 9.0	E	E	71	B	•
		235/40 R19	96V		8.6	671	241	315	263	2047	8.5	8.0 - 9.5	E	E	71	B	•
		245/40 R19	98V		8.7	679	248	318	270	2071	8.5	8.0 - 9.5	E	E	71	B	•
35	255/40 R19	100V		8.8	687	260	321	283	2095	9.0	8.5 - 10.0	E	E	71	B	•	
	235/35 R19	91H		8.7	647	241	305	263	1973	8.5	8.0 - 9.5	E	E	71	B	•	
	245/35 R19	93H		8.8	655	248	309	270	1998	8.5	8.0 - 9.5	E	E	71	B	•	
		255/35 R19	96V		8.7	661	260	311	283	2016	9.0	8.5 - 10.0	E	E	71	B	•
20	35	235/35 R20	92H		8.7	672	241	318	263	2050	8.5	8.0 - 9.5	E	E	71	B	•
21	40	275/40 R21	107H		9.2	753	278	352	303	2297	9.5	9.0 - 11.0	E	E	72	B	•
22	50	275/50 R22	115H		10.0	835	284	387	310	2547	8.5	7.5 - 9.5	E	E	73	B	•



OBSERVE ICE-FREEZER



The **OBSERVE ICE-FREEZER** is a passenger car and SUV winter tire which has been specially developed for the extreme temperatures and weather conditions of the Nordic countries.

The tire has a directional tread pattern. Its special rubber compound and the additional studs in the tread provide good grip on snowy and icy roads.



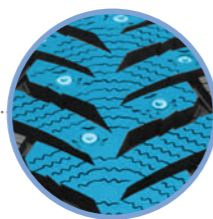
Tire Videos
Observe Ice-Freezer

16 - 19 inch. Speed index T and H.

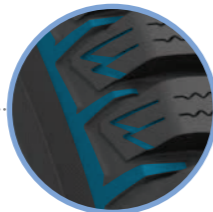


Aspect Ratio 45 - 65. Width 195mm - 245mm.

Tread Pattern Features



Designed with a tree-shaped central tread block, this tire enhances traction and braking performance, especially on ice and snow.



With multiple sipes and grooves on the tire shoulder, the tread design ensures rapid water dispersion, maintaining strong road contact in winter conditions.



Pentagon-shaped spikes in the tread blocks provide additional grip and traction on icy and snow-covered roads.

OBSERVE ICE-FREEZER

RIM DIA.	ASPECT RATIO	TIRE SIZE	LOAD INDEX SPEED SYMBOL	TREAD DEPTH (mm)	INFLATED DIMENSION		LOADED DIMENSION		ROLLING CIRCUMFERENCE (mm)	MEASURING RIM WIDTH (Inch)	ALTERNATE RIM (Inch)	RRC	Wet	Noise db	ABC Noise	Rim Protector
					OVERALL DIA. (mm)	OVERALL WIDTH (mm)	STATIC RADIUS (mm)	STATIC WIDTH (mm)								
16	65	205/65 R16	95T	8.8	672	209	307	228	2050	6.0	5.5 - 7.5	-	-	-	-	-
	60	205/60 R16	92T	8.8	652	209	299	228	1989	6.0	5.5 - 7.5	-	-	-	-	-
		205/60 R16	96H	-	-	-	-	-	-	-	-	5.5 - 7.5	E	E	72	B
55	215/60 R16	95T	8.8	664	221	304	241	2025	6.5	6.0 - 7.5	-	-	-	-	-	-
	195/55 R16	87T	8.7	620	201	287	219	1891	6.0	5.5 - 7.0	-	-	-	-	-	•
17	55	205/55 R16	91T	8.8	632	214	291	233	1928	6.5	5.5 - 7.5	-	-	-	-	•
	55	215/55 R17	98T	8.9	668	226	308	246	2037	7.0	6.0 - 7.5	E	E	72	B	•
		225/55 R17	101T	8.9	680	233	313	254	2074	7.0	6.0 - 8.0	-	-	-	-	•
	50	215/50 R17	91T	9.0	648	226	300	246	1976	7.0	6.0 - 7.5	-	-	-	-	•
18	45	225/45 R17	91T	9.0	634	225	295	245	1934	7.5	7.0 - 8.5	-	-	-	-	•
	55	235/55 R18	104T	9.0	715	245	329	267	2181	7.5	6.5 - 8.5	-	-	-	-	•
		225/45 R18	95T	-	-	-	-	-	-	-	7.0 - 8.5	-	-	-	-	•
45	235/45 R18	98T	9.0	669	236	311	257	2040	8.0	7.5 - 9.0	E	E	72	B	•	
19	50	245/45 R18	100T	9.0	677	243	314	265	2065	8.0	7.5 - 9.0	E	E	72	B	•
		235/50 R19	103T	-	-	-	-	-	-	-	6.5 - 8.5	-	-	-	-	•



OBSERVE ICE-FREEZER

OBSERVE G3-ICE



The **OBSERVE G3-ICE** is a passenger car and SUV winter tire that has been specially developed for the extreme weather conditions of the Nordic countries with both its rubber compound and tread pattern.



Tire Videos
Observe G3-ICE

13 - 22 inch. Speed index Q, T and H.

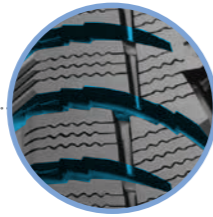


Aspect Ratio 30 - 70. Width 175mm - 325mm.

Tread Pattern Features



The tire is designed with a V-shaped directional tread pattern that efficiently evacuates water. Additionally, spikes in the tread blocks provide increased grip and traction.



Wide tread grooves channel water to the sides and provide improved grip.



The sipes in the shoulder tread blocks extend to the tire sidewall in every second block, enhancing grip on the tire shoulder.

OBSERVE G3-ICE

RIM DIA.	ASPECT RATIO	TIRE SIZE	LOAD INDEX SPEED SYMBOL	TREAD DEPTH (mm)	INFLATED DIMENSION		LOADED DIMENSION		ROLLING CIRCUMFERENCE (mm)	MEASURING RIM WIDTH (Inch)	ALTERNATE RIM (Inch)	RRC	Wet	Noise db	ABC Noise	Rim Protector
					OVERALL DIA. (mm)	OVERALL WIDTH (mm)	STATIC RADIUS (mm)	STATIC WIDTH (mm)								
13	70	175/70 R13	82T	9.0	576	177	261	193	1757	5.0	4.5 - 6.0	E	E	70	B	-
14	60	185/60 R14	82T	9.0	578	189	265	206	1763	5.5	5.0 - 6.5	E	E	70	B	-
15	70	205/70 R15	100T XL	9.9	669	209	303	228	2040	6.0	5.0 - 7.0	D	E	72	B	-
		215/70 R15	98T	9.9	683	221	308	241	2083	6.5	5.5 - 7.0	E	E	72	B	-
		265/70 R15	112T	10.9	753	272	336	296	2297	8.0	7.0 - 9.0	D	E	72	B	-
	65	175/65 R15	84T	9.0	609	177	279	193	1857	5.0	5.0 - 6.0	E	E	70	B	-
	60	195/60 R15	88T	9.0	615	201	282	219	1876	6.0	5.5 - 7.0	E	E	72	B	-
16	55	185/55 R15	82T	9.0	585	194	270	211	1784	6.0	5.0 - 6.5	E	E	70	B	•
		195/55 R15	85T	9.0	595	201	274	219	1815	6.0	5.5 - 7.0	E	E	72	B	•
	50	195/50 R15	82T	9.0	577	201	267	219	1760	6.0	5.5 - 7.0	E	E	72	B	•
	75	225/75 R16	104H	9.9	744	223	335	243	2269	6.0	6.0 - 7.5	E	E	72	B	-
		235/75 R16	108T	10.4	758	235	345	256	2312	6.5	6.0 - 8.0	D	E	72	B	-
		LT245/75 R16	120Q	11.9	774	248	347	270	2361	7.0	6.5 - 8.0	E	E	72	B	-
	70	225/70 R16	107T XL	9.9	722	228	326	249	2202	6.5	6.0 - 7.5	D	E	72	B	-
		235/70 R16	106T	10.4	736	240	332	262	2245	7.0	6.0 - 8.0	D	E	72	B	-
		245/70 R16	111T XL	10.4	750	248	337	270	2288	7.0	6.5 - 8.0	D	E	72	B	-
		255/70 R16	111T	10.4	764	260	343	283	2330	7.5	6.5 - 8.5	D	E	72	B	-
265/70 R16		112T	10.9	778	272	348	296	2373	8.0	7.0 - 9.0	D	E	72	B	-	
275/70 R16		114T	10.9	792	279	354	304	2416	8.0	7.0 - 9.0	D	E	72	B	-	
65		255/65 R16	109T	10.4	738	260	333	283	2251	7.5	7.0 - 9.0	D	E	72	B	-
55	185/55 R16	87T XL	9.0	610	194	283	211	1861	6.0	5.0 - 6.5	E	E	70	B	•	
	215/55 R16	93T	9.0	642	226	295	246	1958	7.0	6.0 - 7.5	D	E	72	B	•	
	225/55 R16	95T	9.0	654	233	300	254	1995	7.0	6.0 - 8.0	D	E	72	B	•	
	50	185/50 R16	81T	9.0	592	194	276	211	1806	6.0	5.0 - 6.5	E	E	70	B	•
	45	195/45 R16	84T XL	9.0	582	195	272	213	1775	6.5	6.0 - 7.5	E	E	72	B	•
70	245/70 R17	110T	10.4	776	248	350	270	2367	7.0	6.5 - 8.0	D	E	72	B	-	
	245/65 R17	107T	10.4	750	248	340	270	2288	7.0	7.0 - 8.5	D	E	72	B	-	
	255/65 R17	114T XL	10.4	764	260	345	283	2330	7.5	7.0 - 9.0	D	E	72	B	-	
	265/65 R17	116T XL	10.9	776	272	350	296	2367	8.0	7.5 - 9.5	D	E	72	B	-	
	275/65 R17	119T XL	10.9	790	279	356	304	2410	8.0	7.5 - 9.5	D	E	72	B	-	
17	60	235/60 R17	106T XL	10.4	714	240	326	262	2178	7.0	6.5 - 8.5	D	E	72	B	-
	50	205/50 R17	89T	9.0	638	214	296	233	1946	6.5	5.5 - 7.5	E	E	72	B	•
	215/45 R17	87T	9.0	626	213	292	232	1909	7.0	7.0 - 8.0	E	E	72	B	•	
	235/45 R17	94T	9.0	644	236	299	257	1964	8.0	7.5 - 9.0	E	E	72	B	•	
	245/45 R17	99T XL	9.0	652	243	302	265	1989	8.0	7.5 - 9.0	D	E	72	B	•	
40	215/40 R17	87T	9.0	604	218	283	238	1842	7.5	7.0 - 8.5	E	E	72	B	•	
	245/40 R17	95T	9.0	628	248	292	270	1915	8.5	8.0 - 9.5	D	E	72	B	•	
	65	235/65 R18	110T XL	10.4	763	240	348	262	2327	7.0	6.5 - 8.5	D	E	72	B	-
		255/60 R18	112T XL	10.4	763	260	348	283	2327	7.5	7.0 - 9.0	D	E	72	B	-
		275/60 R18	117T XL	10.9	787	279	357	304	2400	8.0	7.5 - 9.5	D	E	72	B	-
	55	285/60 R18	120T XL	10.9	799	292	362	318	2437	8.5	8.0 - 10.0	D	E	75	B	-
		215/55 R18	99T XL	9.5	693	226	321	246	2114	7.0	6.0 - 7.5	D	E	72	B	•
		255/55 R18	109T XL	9.5	737	265	338	289	2248	8.0	7.0 - 9.0	D	E	72	B	•
		235/50 R18	101T XL	9.5	693	245	321	267	2114	7.5	6.5 - 8.5	D	E	72	B	•
		50	245/50 R18	100T	9.0	703	253	324	276	2144	7.5	7.0 - 8.5	D	E	72	B
45	255/45 R18	103T	9.0	687	255	318	278	2095	8.5	8.0 - 9.5	D	E	72	B	•	
	225/40 R18	92T XL	9.0	637	230	299	251	1943	8.0	7.5 - 9.0	E	E	72	B	•	
	235/40 R18	95T XL	9.0	645	241	302	263	1967	8.5	8.0 - 9.5	D	E	72	B	•	
	245/40 R18	97T XL	9.0	653	248	305	270	1992	8.5	8.0 - 9.5	D	E	72	B	•	
	55	245/55 R19	103T	9.5	753	253	347	276	2297	7.5	7.0 - 8.5	D	E	72	B	•
19	275/55 R19	111T	9.5	785	284	359	310	2394	8.5	7.5 - 9.5	D	E	72	B	•	
	50	265/50 R19	110T XL	9.5	749	277	345	302	2284	8.5	7.5 - 9.5	D	E	72	B	•
	255/45 R19	104T XL	9.0	713	255	331	278	2175	8.5	8.0 - 9.5	D	E	72	B	•	
	45	285/45 R19	111T XL	9.5	739	285	341	311	2254	9.5	9.0 - 10.5	D	E	75	B	•
	40	255/40 R19	100T	9.0	687	260	321	283	2095	9.0	8.5 - 10.0	D	E	72	B	•
20	275/40 R19	105T	9.0	703	278	327	303	2144	9.5	9.0 - 11.0	D	E	72	B	•	
	285/40 R19	103T	9.0	711	290	330	316	2169	10.0	9.5 - 11.0	D	E	75	B	•	
	60	275/60 R20	115T	10.9	838	279	383	304	2556	8.0	7.5 - 9.5	D	E	72	B	-
	55	255/55 R20	110T XL	9.5	788	265	363	289	2403	8.0	7.0 - 9.0	D	E	72	B	•
	50	275/50 R20	109T	9.5	784	284	362	310	2391	8.5	7.5 - 9.5	D	E	72	B	•
45	235/45 R20	100T XL	9.5	720	236	337	257	2196	8.0	7.5 - 9.0	D	E	72	B	•	
	245/45 R20	99T	9.5	728	243	340	265	2220	8.0	7.5 - 9.0	E	E	72	B	•	
	255/45 R20	105T XL	9.5	738	255	344	278	2251	8.5	8.0 - 9.5	D	E	72	B	•	
	275/45 R20	106T	9.5	756	273	351	298	2306	9.0	8.5 - 10.5	D	E	72	B	•	
	40	265/40 R20	104T	9.0	720	271	337	295	2196	9.5	9.0 - 10.5	D	E	72	B	•
21	35	255/35 R20	97T	9.0	686	260	323	283	2092	9.0	8.5 - 10.0	E	E	72	B	•
	45	265/45 R21	108T	9.5	771	266	359	290	2352	9.0	8.5 - 10.0	D	E	72	B	•
	35	285/35 R21	105T XL	9.5	733	290	345	316	2236	10.0	9.5 - 11.0	D	E	75	B	•
	30	295/35 R21	107T	9.5	739	301	347	328	2254	10.5	10.0 - 11.5	D	E	75	B	•
	30	325/30 R21	108T	9.5	729	331	343	361	2223	11.5	11.0 - 12.0	D	E	75	B	•
22	40	275/40 R22	107T XL	9.5	779	278	365	303	2376	9.5	9.0 - 11.0	D	E	72	B	•



SUV & 4 X 4 TIRES

OPEN COUNTRY A/T III

PROXES SPORT SUV

PROXES COMFORT

PROXES STIII

OPEN COUNTRY U/T

OPEN COUNTRY A/T PLUS

OPEN COUNTRY M/T

SUV & 4 X 4
TIRES



OPEN COUNTRY A/T III



The **OPEN COUNTRY A/T III** is an off-road tire with an asymmetrical profile that can be used in both summer and winter.

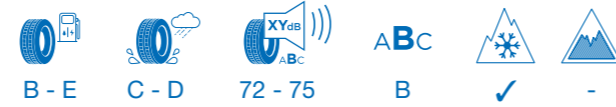
Its suitability for winter use is confirmed by the 3PMSF (snowflake symbol) on the sidewall.

The profile supports off-road driving, e.g. when used in forestry, but also on wintry and muddy roads.

M+S marked.



15 - 20 inch. Speed index S, T and H.



Aspect Ratio 50 - 82. Width 195mm - 285mm.

Tread Pattern Features



Equipped with numerous sipes and grooves on the tire shoulder, the tread design quickly disperses water and mud, providing consistent and strong road contact.

Wide tread blocks optimise the contact area.

Small blocks on the side wall improve movement on terrain.

OPEN COUNTRY A/T III

RIM DIA.	ASPECT RATIO	TIRE SIZE	LOAD INDEX	SPEED SYMBOL	TREAD DEPTH (mm)	INFLATED DIMENSION		LOADED DIMENSION		ROLLING CIRCUMFERENCE (mm)	MEASURING RIM WIDTH (Inch)	ALTERNATE RIM (Inch)	RRC	Wet	Noise db	ABC Noise	Rim Protector
						OVERALL DIA. (mm)	OVERALL WIDTH (mm)	STATIC RADIUS (mm)	STATIC WIDTH (mm)								
15	80	195/80 R15	96S		8.5	693	196	312	214	2114	5.5	5.0 - 6.5	D	D	72	B	-
	75	215/75 R15	100T		8.7	703	216	316	235	2144	6.0	5.5 - 7.0	D	D	72	B	-
		225/75 R15	102T		8.8	719	223	322	243	2193	6.0	6.0 - 7.5	D	D	72	B	-
		235/75 R15	109T		8.9	733	235	328	256	2236	6.5	6.0 - 8.0	D	D	72	B	-
	70	255/70 R15	108T		9.1	739	260	330	283	2254	7.5	6.5 - 8.5	D	D	73	B	-
		265/70 R15	112T		9.2	753	272	336	296	2297	8.0	7.0 - 9.0	D	D	73	B	-
16	82	205/82 R16	110/108T		10.9	736	208	332	227	2245	6.0	6.0	E	D	75	B	-
	70	215/70 R16	100T		8.7	708	221	321	241	2159	6.5	5.5 - 7.0	D	D	72	B	-
		225/70 R16	103H		8.8	722	228	326	249	2202	6.5	6.0 - 7.5	D	D	72	B	-
		235/70 R16	106T		8.9	736	240	332	262	2245	7.0	6.0 - 8.0	D	D	72	B	-
		245/70 R16	111T		9.0	750	248	337	270	2288	7.0	6.5 - 8.0	D	D	72	B	-
		255/70 R16	111T		9.1	764	260	343	283	2330	7.5	6.5 - 8.5	D	D	73	B	-
		265/70 R16	112T		9.2	778	272	348	296	2373	8.0	7.0 - 9.0	D	D	73	B	-
		275/70 R16	114T		9.3	792	279	354	304	2416	8.0	7.0 - 9.0	D	D	73	B	-
17	70	245/70 R17	110T		9.0	776	248	350	270	2367	7.0	6.5 - 8.0	D	D	72	B	-
	65	265/70 R17	115T		9.2	804	272	361	296	2452	8.0	7.0 - 9.0	D	D	73	B	-
		225/65 R17	102H		8.8	724	228	330	249	2208	6.5	6.0 - 8.0	D	D	72	B	-
		235/65 R17	108H		8.9	738	240	335	262	2251	7.0	6.5 - 8.5	D	D	72	B	-
		245/65 R17	111H		9.0	750	248	340	270	2288	7.0	7.0 - 8.5	D	D	72	B	-
		255/65 R17	114H		9.1	764	260	345	283	2330	7.5	7.0 - 9.0	D	D	73	B	-
		265/65 R17	112H		9.2	776	272	350	296	2367	8.0	7.5 - 9.5	D	D	73	B	-
18	60	215/60 R17	96H		8.7	690	221	317	241	2105	6.5	6.0 - 7.5	D	D	72	B	-
	70	255/70 R18	113T		9.1	815	260	368	283	2486	7.5	6.5 - 8.5	D	D	73	B	-
	60	265/70 R18	116H		8.0	829	272	374	296	2528	8.0	7.0 - 9.0	B	C	73	B	-
		235/60 R18	107H		8.9	739	240	339	262	2254	7.0	6.5 - 8.5	D	D	72	B	-
		255/60 R18	112H		9.1	763	260	348	283	2327	7.5	7.0 - 9.0	D	D	73	B	-
		265/60 R18	110H		9.2	775	272	353	296	2364	8.0	7.5 - 9.5	D	D	73	B	-
19	55	255/55 R19	111H		-	-	-	-	-	-	-	7.0 - 9.0	D	D	73	B	-
	60	275/60 R20	115H		9.3	838	279	383	304	2556	8.0	7.5 - 9.5	D	D	73	B	-
20	50	265/50 R20	107H		9.2	774	277	358	302	2361	8.5	7.5 - 9.5	D	D	73	B	-
		285/50 R20	112H		9.4	794	297	366	324	2422	9.0	8.0 - 10.0	D	D	75	B	-



OPEN COUNTRY A/T III





PROXES Sport SUV



The **PROXES Sport SUV** features an asymmetrical tread pattern and a specialised Nano Balance compound, enhancing both handling and grip.

Wide circumferential and shoulder grooves efficiently channel water away, improving traction and control on both wet and dry surfaces.

17 - 23 inch. Speed index V, W and Y.

C - D	A	70 - 73	A - B	-	-

Aspect Ratio 30 - 65. Width 215mm - 315mm.

Tread Pattern Features



Asymmetrical tread design with transverse grooves in the midrib provides excellent traction.

The tread block design improves the contact patch of the tire as well as the handling and braking performance.

Wide shoulder grooves allow for a good lateral water drainage.

PROXES SPORT SUV

RIM DIA.	ASPECT RATIO	TIRE SIZE	LOAD INDEX SPEED SYMBOL	TREAD DEPTH (mm)	INFLATED DIMENSION		LOADED DIMENSION		ROLLING CIRCUMFERENCE (mm)	MEASURING RIM WIDTH (Inch)	ALTERNATE RIM (Inch)	RRC	Wet	Noise db	ABC Noise	Rim Protector
					OVERALL DIA. (mm)	OVERALL WIDTH (mm)	STATIC RADIUS (mm)	STATIC WIDTH (mm)								
17	65	215/65 R17	99V	8.0	712	221	325	241	2172	6.5	6.0 - 7.5	D	A	70	B	•
		235/65 R17	108W	7.9	738	240	335	262	2251	7.0	6.5 - 8.5	C	A	70	B	•
	60	255/60 R17	110W	8.0	738	260	53	283	2251	7.5	7.0 - 9.0	C	A	70	A	•
18	55	275/55 R17	109V	8.3	734	284	334	310	2239	8.5	7.5 - 9.5	C	A	70	B	•
	60	265/60 R18	110V	8.3	775	272	353	296	2364	8.0	7.0 - 9.0	C	A	70	B	•
19	50	225/50 R18	95W	7.9	738	240	335	262	2251	7	6.0 - 8.0	D	A	70	B	•
	55	225/55 R19	99V	8.0	738	260	335	283	2251	7.5	6.0 - 8.0	C	A	70	B	•
	55	275/55 R19	111W	8.1	785	284	359	310	2394	8.5	7.5 - 9.5	C	A	70	B	•
20	45	275/45 R19	108Y	7.6	731	273	338	298	2230	9.0	8.5 - 10.5	C	A	70	A	•
	55	255/55 R20	110Y	7.7	683	233	317	254	2083	7	7.0 - 9.0	C	A	70	A	•
	40	285/40 R20	108V	7.8	731	233	338	254	2230	7	9.5 - 11.0	C	A	72	A	•
21		295/40 R20	110Y	7.5	744	301	346	328	2269	10.5	10.0 - 11.5	C	A	72	A	•
	40	275/40 R21	107Y	7.9	753	278	352	303	2297	9.5	9.0 - 11.0	C	A	72	B	•
	40	315/40 R21	111Y	7.6	788	265	363	289	2403	8	10.5 - 12.5	C	A	72	B	•
22	35	315/35 R21	111Y	8.0	736	290	343	316	2245	10	10.5 - 12.5	C	A	73	B	•
	40	275/40 R22	108Y	7.9	779	278	365	303	2376	9.5	9.0 - 11.0	C	A	70	A	•
	35	275/35 R22	104Y	7.8	751	278	354	303	2291	9.5	9.0 - 11.0	C	A	70	A	•
23	30	295/30 R22	103Y	7.7	737	301	349	328	2248	10.5	10.0 - 11.0	D	A	73	B	•
	35	285/35ZR23	107Y	7.8	753	320	352	349	2297	11	9.5 - 11.0	C	A	73	B	•



PROXES SPORT SUV



PROXES Comfort



Tire Videos
PROXES Comfort

16 - 19 inch. Speed index V and W.



Aspect Ratio 45 - 70. Width 205mm - 235mm.

The **PROXES Comfort** is a summer tire for passenger cars and SUVs with an asymmetrical tread design.

The tire impresses with its high driving stability in corners as well as good handling and very good grip performance in wet conditions.

Tread Pattern Features



Asymmetrical tread pattern design with improved footprint.

Wide circumferential tread grooves with small lateral shoulder grooves for optimised water drainage.

Tight grooves in the tire shoulder drain water quickly and improve wet grip performance.

PROXES COMFORT

RIM DIA.	ASPECT RATIO	TIRE SIZE	LOAD INDEX SPEED SYMBOL	TREAD DEPTH (mm)	INFLATED DIMENSION		LOADED DIMENSION		ROLLING CIRCUMFERENCE (mm)	MEASURING RIM WIDTH (Inch)	ALTERNATE RIM (Inch)	RRC	Wet	Noise db	ABC Noise	Rim Protector
					OVERALL DIA. (mm)	OVERALL WIDTH (mm)	STATIC RADIUS (mm)	STATIC WIDTH (mm)								
16	70	215/70 R16	100V	8.0	708	221	321	241	2159	6.5	5.5 - 7.0	C	A	70	B	-
	65	205/65 R16	95W	9.6	672	209	307	228	2050	6.0	5.5 - 7.5	D	A	70	B	-
		215/65 R16	102V	7.9	686	221	312	241	2092	6.5	6.0 - 7.5	C	A	70	B	-
60	215/60 R16	99V	7.8	664	221	304	241	2025	6.5	6.0 - 7.5	-	-	70	B	-	
17	65	215/65 R17	99V	7.9	712	221	325	241	2172	6.5	6.0 - 7.5	C	A	70	B	-
		225/65 R17	106V	8.0	724	228	330	249	2208	6.5	6.0 - 8.0	C	A	70	B	-
	60	215/60 R17	100V	7.8	690	221	317	241	2105	6.5	6.0 - 7.5	C	A	70	B	-
18	60	225/60 R17	103V	7.9	702	228	321	249	2141	6.5	6.0 - 8.0	C	A	70	B	-
		225/55 R17	101W	7.8	680	233	313	254	2074	7.0	6.0 - 8.0	C	A	70	B	-
	55	235/55 R17	99V	7.9	690	245	317	267	2105	7.5	6.5 - 8.5	C	A	71	B	-
19	65	235/65 R18	110W	8.1	763	240	348	262	2327	7.0	6.5 - 8.5	C	A	71	B	-
		225/60 R18	104W	7.9	727	228	334	249	2217	6.5	6.0 - 8.0	C	A	70	B	-
	60	235/60 R18	107W	8.0	739	240	339	262	2254	7.0	6.5 - 8.5	C	A	71	B	-
		215/55 R18	99V	7.7	693	226	321	246	2114	7.0	6.0 - 7.5	C	A	70	B	-
	55	225/55 R18	102W	7.8	705	233	325	254	2150	7.0	6.0 - 8.0	C	A	70	B	-
		235/55 R18	100V	7.9	715	245	329	267	2181	7.5	6.5 - 8.5	C	A	71	B	-
50	215/50 R18	92W	7.6	673	226	313	246	2053	7.0	6.0 - 7.5	D	A	70	B	•	
	225/50 R18	95W	7.7	683	233	317	254	2083	7.0	6.0 - 8.0	D	A	70	B	•	
	55	225/55 R19	99V	7.8	731	233	338	254	2230	7.0	6.0 - 8.0	C	A	70	B	-
45	50	235/50 R19	99W	7.8	719	245	333	267	2193	7.5	6.5 - 8.5	C	A	71	B	•
	45	225/45 R19	96W	7.6	685	225	320	245	2089	7.5	7.0 - 8.5	0	0	70	B	-
		235/45 R19	99W	7.7	695	236	324	257	2120	8.0	7.5 - 9.0	C	A	71	B	•



PROXES COMFORT SUV

PROXES STIII



The **PROXES STIII** has a sporty design and is a premium sports summer tire for SUVs.

The tire has a directional tread.

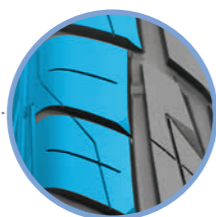
16 - 24 inch. Speed index V and W.



Aspect Ratio 25 - 65. Width 215mm - 335mm.

Tread Pattern Features

AGGRESSIVE, DIRECTIONAL PROFILE



Directional tread blocks with high block stiffness reduce uneven wear and provide outstanding braking performance.



Parallelogram shaped tread blocks enhance the dry performance. The resulting grooves drain the water away quickly.



Arrow-shaped tips in the tread improve wet grip.

PROXES STIII

RIM DIA.	ASPECT RATIO	TIRE SIZE	LOAD INDEX SPEED SYMBOL	TREAD DEPTH (mm)	INFLATED DIMENSION		LOADED DIMENSION		ROLLING CIRCUMFERENCE (mm)	MEASURING RIM WIDTH (Inch)	ALTERNATE RIM (Inch)	RRC	Wet	Noise db	ABC Noise	Rim Protector
					OVERALL DIA. (mm)	OVERALL WIDTH (mm)	STATIC RADIUS (mm)	STATIC WIDTH (mm)								
16	65	215/65 R16	102V	8.0	686	221	312	241	2092	6.5	6.0 - 7.5	D	D	71	B	•
	60	235/60 R16	104V	8.0	688	240	313	262	2098	7.0	6.5 - 8.5	D	D	71	B	•
65		225/65 R17	106V	8.0	724	228	330	249	2208	6.5	6.0 - 8.0	D	D	71	B	•
		235/65 R17	108V	8.0	738	240	335	262	2251	7.0	6.5 - 8.5	D	D	71	B	•
		265/65 R17	112V	8.0	776	272	350	296	2367	8.0	7.5 - 9.5	D	D	72	B	•
17		215/60 R17	100V	8.0	690	221	317	241	2105	6.5	6.0 - 7.5	D	D	71	B	•
	60	225/60 R17	103V	8.0	702	228	321	249	2141	6.5	6.0 - 8.0	D	D	71	B	•
		255/60 R17	110V	8.0	738	260	335	283	2251	7.5	7.0 - 9.0	D	D	73	B	•
	275/60 R17	110V	8.0	762	279	345	304	2324	8.0	7.5 - 9.5	D	D	72	B	•	
18	60	235/60 R18	107V	8.0	739	240	339	262	2254	7.0	6.5 - 8.5	D	D	71	B	•
		245/60 R18	105V	8.0	751	248	343	270	2291	7.0	7.0 - 8.5	D	D	71	B	•
		255/60 R18	112V	8.0	763	260	348	283	2327	7.5	7.0 - 9.0	D	D	73	B	•
		265/60 R18	114V	8.0	775	272	353	296	2364	8.0	7.5 - 9.5	D	D	73	B	•
	285/60 R18	120V	8.1	799	292	362	318	2437	8.5	8.0 - 10.0	D	D	74	B	•	
55	225/55 R18	102V	8.0	705	233	325	254	2150	7.0	6.0 - 8.0	D	D	71	B	•	
	255/55 R18	109V	8.0	737	265	338	289	2248	8.0	7.0 - 9.0	D	D	73	B	•	
19	55	225/55 R19	99V	8.0	731	233	338	254	2230	7.0	6.0 - 8.0	D	D	71	B	•
		245/55 R19	103V	8.0	753	253	347	276	2297	7.5	7.0 - 8.5	D	D	71	B	•
	255/55 R19	111V	8.0	763	265	351	289	2327	8.0	7.0 - 9.0	D	D	73	B	•	
50	255/50 R19	107V	8.0	739	265	341	289	2254	8.0	7.0 - 9.0	D	D	73	B	•	
20	55	275/55 R20	117V	8.0	810	284	372	310	2471	8.5	7.5 - 8.5	D	D	72	B	•
		245/50 R20	102V	8.0	754	253	350	276	2300	7.5	7.0 - 8.5	D	D	71	B	•
	255/50 R20	109V	8.0	764	265	354	289	2330	8.0	7.0 - 9.0	D	D	73	B	•	
	50	265/50 R20	111V	8.0	774	277	358	302	2361	8.5	7.5 - 9.5	D	D	73	B	•
		275/50 R20	113W	8.0	784	284	362	310	2391	8.5	7.5 - 9.5	D	D	73	B	•
	285/50 R20	116V	8.0	794	297	366	324	2422	9.0	8.0 - 10.0	D	D	74	B	•	
45	305/50 R20	120V	8.2	814	316	373	344	2483	9.5	8.5 - 11.0	D	D	74	B	•	
	265/45 R20	108V	8.0	746	266	347	290	2275	9.0	8.5 - 10.0	D	D	73	B	•	
	275/45 R20	110V	8.0	756	273	351	298	2306	9.0	8.5 - 10.5	D	D	73	B	•	
	285/45 R20	112W	8.0	765	285	354	311	2330	9.5	9.0 - 10.5	D	D	74	B	•	
40	295/45 R20	114V	8.0	774	296	358	323	2361	10.0	9.5 - 11.0	D	D	74	B	•	
	275/40 R20	106W	8.0	728	278	340	303	2220	9.5	9.0 - 10.5	D	D	73	B	•	
	295/40 R20	110V	8.0	744	301	346	328	2269	10.5	10.0 - 11.5	D	D	75	B	•	
35	315/35 R20	110W	8.0	728	320	340	349	2220	11.0	10.5 - 12.5	D	D	75	B	•	
21	50	275/50 R21	113V	8.0	809	284	374	310	2467	8.5	7.5 - 9.5	D	D	73	B	•
		275/50 R22	115V	8.0	835	284	387	310	2547	8.5	7.5 - 9.5	D	D	73	B	•
	45	265/45 R22	109V	8.0	797	266	372	290	2431	9.0	8.5 - 10.0	D	D	73	B	•
		285/45 R22	114V	8.0	815	285	379	311	2486	9.5	9.0 - 10.5	D	D	74	B	•
	40	305/45 R22	118V	8.0	833	303	386	330	2541	10.0	9.5 - 11.5	D	D	74	B	•
		265/40 R22	106W	8.0	771	271	362	295	2352	9.5	9.0 - 10.5	D	D	73	B	•
	35	275/40 R22	108W	8.0	779	278	365	303	2376	9.5	9.0 - 10.5	D	D	73	B	•
		305/40 R22	114V	8.0	803	313	375	341	2449	11.0	10.0 - 12.0	D	D	74	B	•
		265/35 R22	102W	8.0	745	271	352	295	2272	9.5	9.0 - 10.5	D	D	73	B	•
	30	285/35 R22	106W	8.0	759	290	357	316	2315	10.0	9.5 - 11.0	D	D	74	B	•
315/35 R22		111V	8.0	779	320	360	349	2414	11.0	10.5 - 12.5	D	D	74	B	•	
25	295/30 R22	103W	8.0	737	301	349	328	2248	10.5	10.0 - 11.0	D	D	75	B	•	
24	40	335/25 R22	105W	8.1	727	343	345	374	2217	12.0	11.5 - 12.5	D	C	75	B	•
		285/40 R24	112V	8.0	838	290	394	316	2556	10.0	9.5 - 11.0	D	D	75	B	•
	35	285/35 R24	108W	8.0	810	290	383	316	2471	10.0	9.5 - 11.0	D	D	75	B	•
		305/35 R24	112W	8.0	824	313	388	341	2513	11.0	10.0 - 12.0	D	D	75	B	•



OPEN COUNTRY U/T



The **OPEN COUNTRY U/T** (Urban Terrain) has an asymmetrical tread pattern design and was designed for modern pickup and SUV vehicles.

The tire has a functional and innovative design, which provides good driving characteristics on dry and wet roads.

M+S Marked

16 - 22 inch. Speed index S, T, H, V and W.



Aspect Ratio 45 - 75. Width 215mm - 285mm.

Tread Pattern Features



Tight tread blocks improve contact with the road and thus the grip.

Directing S-shaped diagonal grooves in the tire direct water away quickly.

Wide shoulder grooves quickly drain water away and provide improved grip.

OPEN COUNTRY U/T

RIM DIA.	ASPECT RATIO	TIRE SIZE	LOAD INDEX	SPEED SYMBOL	TREAD DEPTH (mm)	INFLATED DIMENSION		LOADED DIMENSION		ROLLING CIRCUMFERENCE (mm)	MEASURING RIM WIDTH (Inch)	ALTERNATE RIM (Inch)	RRC	Wet	Noise db	ABC Noise	Rim Protector
						OVERALL DIA. (mm)	OVERALL WIDTH (mm)	STATIC RADIUS (mm)	STATIC WIDTH (mm)								
16	75	225/75 R16	115S	9.5	744	223	335	243	2269	6.0	6.0 - 7.5	D	C	70	B	•	
		245/75 R16	120S	9.7	774	248	347	270	2361	7.0	6.5 - 8.0	D	C	70	B	•	
		265/75 R16	116T	9.3	804	267	358	291	2452	7.5	7.0 - 9.0	D	C	71	B	•	
	70	215/70 R16	100H	8.3	708	221	321	241	2159	6.5	5.5 - 7.0	D	D	71	B	•	
		225/70 R16	103H	7.4	722	228	326	249	2202	6.5	6.0 - 7.5	D	C	71	B	•	
		235/70 R16	106H	7.5	736	240	332	262	2245	7.0	6.0 - 8.0	D	C	71	B	•	
		245/70 R16	111H	9.1	750	248	337	270	2288	7.0	6.5 - 8.0	D	C	71	B	•	
		255/70 R16	111H	9.2	764	260	343	283	2330	7.5	6.5 - 8.5	D	C	71	B	•	
		265/70 R16	112H	9.3	778	272	348	296	2373	8.0	7.0 - 9.0	D	C	71	B	•	
65	215/65 R16	102V	7.8	686	221	312	241	2092	6.5	6.0 - 7.5	D	C	71	B	•		
	215/65 R16	98H	8.3	686	221	312	241	2092	6.5	6.0 - 7.5	D	C	71	B	•		
	235/60 R16	100H	8.5	688	240	313	262	2098	7.0	7.0	D	C	71	B	•		
17	75	245/75 R17	112S	9.1	800	248	359	270	2440	7.0	6.5 - 8.0	D	C	71	B	•	
		265/70 R17	110H	9.1	776	248	350	270	2367	7.0	6.5 - 8.0	D	C	71	B	•	
	70	265/70 R17	115H	9.3	804	272	361	296	2452	8.0	7.0 - 9.0	D	C	71	B	•	
		225/65 R17	102H	8.4	724	228	330	249	2208	6.5	6.0 - 8.0	D	C	71	B	•	
		235/65 R17	104H	8.5	738	240	335	262	2251	7.0	6.5 - 8.5	D	C	71	B	•	
		235/65 R17	108V	8.0	738	240	335	262	2251	7.0	6.5 - 8.5	D	C	71	B	•	
		245/65 R17	111H	9.1	750	248	340	270	2288	7.0	7.0 - 8.5	D	C	71	B	•	
		255/65 R17	110H	9.2	764	260	345	283	2330	7.5	7.0 - 9.0	D	C	71	B	•	
	65	265/65 R17	112H	9.3	776	272	350	296	2367	8.0	7.5 - 9.5	D	C	71	B	•	
		275/65 R17	115H	9.4	790	279	356	304	2410	8.0	7.5 - 9.5	D	C	72	B	•	
		285/65 R17	116H	9.5	802	292	360	318	2446	8.5	8.0 - 10.0	D	C	72	B	•	
		215/60 R17	96V	7.8	690	221	317	241	2105	6.5	6.5	D	C	71	B	•	
60	225/60 R17	99V	7.9	702	228	321	249	2141	6.5	6.5	D	C	71	B	•		
	235/60 R17	102H	8.5	714	240	326	262	2178	7.0	7.0	D	C	71	B	•		
	215/55 R17	94V	7.8	668	226	308	246	2037	7.0	7.0	D	C	71	B	•		
55	235/55 R17	103V	8.0	690	245	317	267	2105	7.5	7.5	D	C	71	B	•		
	70	255/70 R18	113S	9.2	815	260	368	283	2486	7.5	6.5 - 8.5	D	C	71	B	•	
265/70 R18		116H	9.3	829	272	374	296	2528	8.0	7.0 - 9.0	D	C	71	B	•		
65		265/65 R18	114H	9.3	801	272	363	296	2443	8.0	7.5 - 9.5	D	C	71	B	•	
		275/65 R18	116H	9.4	815	279	368	304	2486	8.0	7.5 - 9.5	D	C	72	B	•	
		225/60 R18	100H	8.4	727	228	334	249	2217	6.5	6.5	D	C	71	B	•	
60		235/60 R18	107W	8.0	739	240	339	262	2254	7.0	7.0	D	C	71	B	•	
	245/60 R18	105V	8.1	751	248	343	270	2291	7.0	7.0	D	C	71	B	•		
	255/60 R18	112V	8.2	763	260	348	283	2327	7.5	7.5	D	C	71	B	•		
	265/60 R18	110H	9.3	775	272	353	296	2364	8.0	8.0	D	C	71	B	•		
	285/60 R18	116H	9.5	799	292	362	318	2437	8.5	8.5	D	C	72	B	•		
	215/55 R18	99V	7.8	693	226	321	246	2114	7.0	7.0	D	C	71	B	•		
55	225/55 R18	98V	7.9	705	233	325	254	2150	7.0	7.0	D	C	71	B	•		
	235/55 R18	104V	8.5	715	245	329	267	2181	7.5	7.5	D	C	71	B	•		
	255/55 R18	109V	8.2	737	265	338	289	2248	8.0	8.0	D	C	71	B	•		
19	60	255/60 R19	109V	8.2	789	260	361	283	2406	7.5	7.5	D	C	71	B	•	
	55	225/55 R19	99V	7.9	731	233	338	254	2230	7.0	7.0	D	C	71	B	•	
		235/55 R19	101W	8.0	741	245	342	267	2260	7.5	7.5	D	C	71	B	•	
20	60	275/60 R20	115V	8.4	838	279	383	304	2556	8.0	8.0	D	C	72	B	•	
	55	275/55 R20	117V	8.4	810	284	372	310	2471	8.5	8.5	D	C	72	B	•	
		50	245/50 R20	102V	8.1	754	253	350	276	2300	7.5	7.5	D	C	71	B	•
21	50	285/50 R20	116V	8.5	794	297	366	324	2422	9.0	9.0	D	C	72	A	•	
	50	275/50 R21	113V	8.4	809	284	374	310	2467	8.5	8.5	D	C	72	B	•	
22	50	275/50 R22	111H	9.4	835	284	387	310	2547	8.5	8.5	D	C	72	B	•	
	45	285/45 R22	114V	8.5	815	285	379	311	2486	9.5	9.5	D	C	72	A	•	





OPEN COUNTRY A/T PLUS



The premium **OPEN COUNTRY A/T Plus** tire is an all terrain-tire with an asymmetric tread pattern.

Its aggressive sidewall is designed to enhance the style of SUV's.

M+S marked.

15 - 20 inch. Speed index S, T and H.



Aspect Ratio 45 - 85. Width 205mm - 285mm.

Tread Pattern Features



Asymmetric tread pattern delivers excellent off-road traction while enhancing stability and braking performance, making it the perfect choice for adventurous drivers.

Open Groove-design ensures superior traction for off-road performance.

Step Block Edges deliver initial strong traction.

OPEN COUNTRY A/T PLUS

RIM DIA.	ASPECT RATIO	TIRE SIZE	LOAD INDEX SPEED SYMBOL	TREAD DEPTH (mm)	INFLATED DIMENSION		LOADED DIMENSION		ROLLING CIRCUMFERENCE (mm)	MEASURING RIM WIDTH (Inch)	ALTERNATE RIM (Inch)	RRC	Wet	Noise db	ABC Noise	Rim Protector
					OVERALL DIA. (mm)	OVERALL WIDTH (mm)	STATIC RADIUS (mm)	STATIC WIDTH (mm)								
15	80	215/80 R15	102T	9.1	725	216	325	235	2211	6.0	5.5 - 7.0	D	D	71	B	-
	75	205/75 R15	97T	9.1	689	203	311	221	2101	5.5	5.0 - 7.0	D	D	71	B	-
	70	205/70 R15	96S	9.1	669	209	303	228	2040	6.0	5.0 - 7.0	D	D	70	B	-
	10.5	31X/10.5 R15	109S	11.3	775	268	344	292	2364	8.5	8.5	D	D	72	B	-
16	85	235/85 R16	120/116S	9.7	806	235	359	256	2458	6.5	6.5	D	D	72	B	-
	75	225/75 R16	104T	9.1	744	223	335	243	2269	6.0	6.0 - 7.5	D	D	70	B	-
		245/75 R16	120/116S	9.7	774	248	347	270	2361	7.0	6.5 - 8.0	D	D	72	B	-
		265/75 R16	119/116S	9.8	804	267	358	291	2452	7.5	7.0 - 9.0	D	D	72	B	-
		285/75 R16	116/113S	9.8	834	286	370	312	2544	8.0	8.0	D	D	72	B	-
65	215/65 R16	98H	9.1	686	221	312	241	2092	6.5	6.0 - 7.5	D	D	70	B	-	
17	60	235/60 R16	100H	8.6	688	240	313	262	2098	7.0	6.5 - 8.5	D	D	70	B	-
	75	245/75 R17	121/118S	9.7	800	248	359	270	2440	7.0	6.5 - 8.0	D	D	72	B	-
	70	265/70 R17	121/118S	9.8	804	272	361	296	2452	8.0	7.0 - 9.0	D	D	72	B	-
18	65	275/65 R18	113/110S	9.8	815	279	368	304	2486	8.0	7.5 - 9.5	D	D	72	B	-
	55	255/55 R18	109H	9.0	737	265	338	289	2248	8.0	7.0 - 9.0	D	D	71	B	•
20	45	275/45 R20	110H	8.7	756	273	351	298	2306	9.0	8.5 - 10.5	D	D	72	B	•



OPEN COUNTRY A/T plus





OPEN COUNTRY M/T



The **OPEN COUNTRY M/T** (Mud/ Terrain) is a high-performance off-road tire with asymmetrical tread.

The tread pattern extends into the tire sidewall, promoting forward movement in off-road conditions. Its aggressive design effectively channels mud and water away, improving grip on uneven surfaces.

POR - Professional Off-Road use.



Tire Videos
OPEN COUNTRY M/T

15 - 20 inch. Speed index P and Q.



Aspect Ratio 50 - 85. Width 225mm - 315mm.

Tread Pattern Features



Wide tread blocks optimise the contact area.

The shoulder tread blocks incorporate bevelled edges that enhance the self-cleaning capability of the tread.

Small grooves in the tire blocks support rapid water drainage.

OPEN COUNTRY M/T

RIM DIA.	ASPECT RATIO	TIRE SIZE	LOAD INDEX SPEED SYMBOL	TREAD DEPTH (mm)	INFLATED DIMENSION		LOADED DIMENSION		ROLLING CIRCUMFERENCE (mm)	MEASURING RIM WIDTH (Inch)	ALTERNATE RIM (Inch)	RRC	Wet	Noise db	ABC Noise	Rim Protector
					OVERALL DIA. (mm)	OVERALL WIDTH (mm)	STATIC RADIUS (mm)	STATIC WIDTH (mm)								
15	12.50	33/12.5 R15	108P	16.7	832	318	366	347	2538	10.5	-	-	-	-	-	•
	10.50	31/10.5 R15	109P	15.2	781	268	347	292	2382	8.5	-	-	-	-	-	•
	9.5	33/9.5 R15	104Q	13.5	750	240	334	262	2288	7.5	-	-	-	-	-	•
16	85	235/85 R16	120/116P	14.6	813	240	378	260	2483	6.5	-	-	-	-	-	•
		255/85 R16	119/116P	15.0	846	255	375	278	2580	7.0	-	-	-	-	-	•
	75	225/75 R16	115/116P	13.5	750	223	337	243	2288	6.0	6.0 - 7.5	-	-	-	-	•
		245/75 R16	120/116P	14.6	782	253	364	268	2388	7.0	6.5 - 8.0	-	-	-	-	•
		265/75 R16	119/116P	15.0	810	275	377	290	2473	7.5	7.0 - 9.0	-	-	-	-	•
70	285/75 R16	116/113P	15.2	840	286	372	312	2562	8.0	7.5 - 9.5	-	-	-	-	•	
	315/75 R16	121P	16.7	884	313	389	341	2696	8.5	8.5	-	-	-	-	•	
	305/70 R16	118/115P	16.0	840	311	372	339	2562	9.0	-	-	-	-	-	•	
17	70	265/70 R17	118/115P	15.0	810	272	363	296	2471	8.0	7.0 - 9.0	-	-	-	-	•
		285/70 R17	121P	15.0	838	292	374	318	2556	8.5	7.5 - 9.5	-	-	-	-	•
	295/70 R17	121/118P	15.5	852	299	380	326	2599	8.5	8.5	-	-	-	-	•	
65	265/65 R17	120/117P	15.0	782	272	352	296	2385	8.0	7.5 - 9.5	-	-	-	-	•	
12.50	35/12.5 R17	121P	16.7	883	318	392	347	2693	10.0	10.0	-	-	-	-	•	
18	70	275/70 R18	121/118P	15.2	843	279	379	304	2571	8.0	7.0 - 9.0	-	-	-	-	•
	12.50	33/12.5 R18	118P	16.7	832	318	375	347	2538	10.0	10.0	-	-	-	-	•
		35/12.5 R18	118P	16.7	883	318	395	347	2693	10.0	10.0	-	-	-	-	•
20	50	285/50 R20	119P	15.0	800	297	368	324	2440	9.0	9.0	-	-	-	-	•
	13.50	37/13.5 R20	121P	16.7	934	345	420	376	2849	11.0	11.0	-	-	-	-	•
	12.50	33/12.5 R20	114P	16.7	832	318	423	343	2538	10.0	10.0	-	-	-	-	•
35/12.5 R20		121P	16.7	883	318	400	347	2693	10.0	10.0	-	-	-	-	•	

All Open Country M/T tires marked POR and are outside scope of EU label regulation.





WINTER SUV & 4 X 4 TIRES

OPEN COUNTRY A/T III

OBSERVE S944 SUV

SNOWPROX S954 SUV

OBSERVE GSi-6 SUV

OBSERVE ICE-FREEZER SUV

WINTER SUV
& 4 X 4 TIRES



OPEN COUNTRY A/T III



The **OPEN COUNTRY A/T III** is an off-road tire with an asymmetrical profile that can be used in both summer and winter.

Its suitability for winter use is confirmed by the 3PMSF (snowflake symbol) on the sidewall.

The profile supports off-road driving, e.g. when used in forestry, but also on wintry and muddy roads.

M+S marked.



15 - 20 inch. Speed index S, T and H.



Aspect Ratio 50 - 82. Width 195mm - 285mm.

Tread Pattern Features



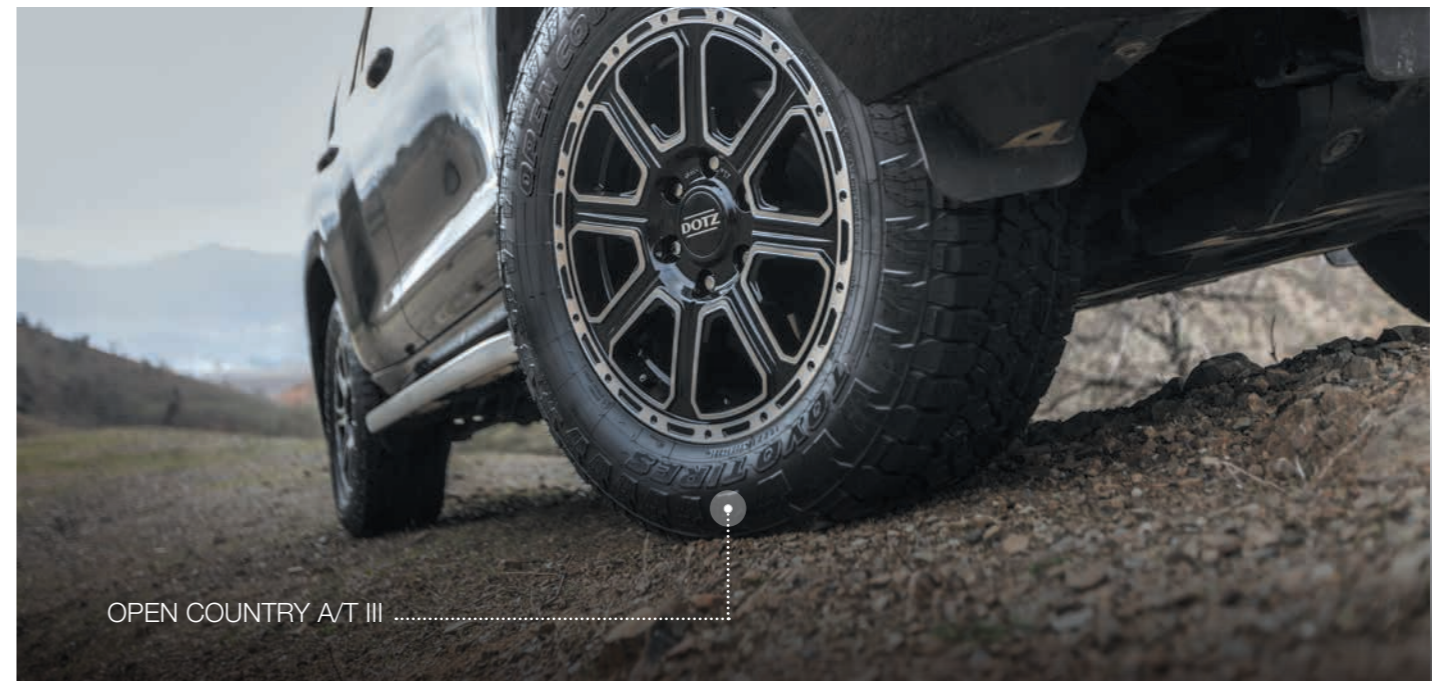
Equipped with numerous sipes and grooves on the tire shoulder, the tread design quickly disperses water and mud, providing consistent and strong road contact.

Wide tread blocks optimise the contact area.

Small blocks on the side wall improve movement on terrain.

OPEN COUNTRY A/T III

RIM DIA.	ASPECT RATIO	TIRE SIZE	LOAD INDEX	SPEED SYMBOL	TREAD DEPTH (mm)	INFLATED DIMENSION		LOADED DIMENSION		ROLLING CIRCUMFERENCE (mm)	MEASURING RIM WIDTH (Inch)	ALTERNATE RIM (Inch)	RRC	Wet	Noise db	ABC Noise	Rim Protector
						OVERALL DIA. (mm)	OVERALL WIDTH (mm)	STATIC RADIUS (mm)	STATIC WIDTH (mm)								
15	80	195/80 R15	96S		8.5	693	196	312	214	2114	5.5	5.0 - 6.5	D	D	72	B	-
	75	215/75 R15	100T		8.7	703	216	316	235	2144	6.0	5.5 - 7.0	D	D	72	B	-
		225/75 R15	102T		8.8	719	223	322	243	2193	6.0	6.0 - 7.5	D	D	72	B	-
		235/75 R15	109T		8.9	733	235	328	256	2236	6.5	6.0 - 8.0	D	D	72	B	-
	70	255/70 R15	108T		9.1	739	260	330	283	2254	7.5	6.5 - 8.5	D	D	73	B	-
		265/70 R15	112T		9.2	753	272	336	296	2297	8.0	7.0 - 9.0	D	D	73	B	-
16	82	205/82 R16	110/108T		10.9	736	208	332	227	2245	6.0	6.0	E	D	75	B	-
	70	215/70 R16	100T		8.7	708	221	321	241	2159	6.5	5.5 - 7.0	D	D	72	B	-
		225/70 R16	103H		8.8	722	228	326	249	2202	6.5	6.0 - 7.5	D	D	72	B	-
		235/70 R16	106T		8.9	736	240	332	262	2245	7.0	6.0 - 8.0	D	D	72	B	-
		245/70 R16	111T		9.0	750	248	337	270	2288	7.0	6.5 - 8.0	D	D	72	B	-
		255/70 R16	111T		9.1	764	260	343	283	2330	7.5	6.5 - 8.5	D	D	73	B	-
		265/70 R16	112T		9.2	778	272	348	296	2373	8.0	7.0 - 9.0	D	D	73	B	-
		275/70 R16	114T		9.3	792	279	354	304	2416	8.0	7.0 - 9.0	D	D	73	B	-
17	70	245/70 R17	110T		9.0	776	248	350	270	2367	7.0	6.5 - 8.0	D	D	72	B	-
	65	265/70 R17	115T		9.2	804	272	361	296	2452	8.0	7.0 - 9.0	D	D	73	B	-
		225/65 R17	102H		8.8	724	228	330	249	2208	6.5	6.0 - 8.0	D	D	72	B	-
		235/65 R17	108H		8.9	738	240	335	262	2251	7.0	6.5 - 8.5	D	D	72	B	-
		245/65 R17	111H		9.0	750	248	340	270	2288	7.0	7.0 - 8.5	D	D	72	B	-
		255/65 R17	114H		9.1	764	260	345	283	2330	7.5	7.0 - 9.0	D	D	73	B	-
		265/65 R17	112H		9.2	776	272	350	296	2367	8.0	7.5 - 9.5	D	D	73	B	-
18	60	215/60 R17	96H		8.7	690	221	317	241	2105	6.5	6.0 - 7.5	D	D	72	B	-
	70	255/70 R18	113T		9.1	815	260	368	283	2486	7.5	6.5 - 8.5	D	D	73	B	-
		265/70 R18	116H		8.0	829	272	374	296	2528	8.0	7.0 - 9.0	B	C	73	B	-
		235/60 R18	107H		8.9	739	240	339	262	2254	7.0	6.5 - 8.5	D	D	72	B	-
		255/60 R18	112H		9.1	763	260	348	283	2327	7.5	7.0 - 9.0	D	D	73	B	-
		265/60 R18	110H		9.2	775	272	353	296	2364	8.0	7.5 - 9.5	D	D	73	B	-
19	55	255/55 R19	111H		-	-	-	-	-	-	-	7.0 - 9.0	D	D	73	B	-
	60	275/60 R20	115H		9.3	838	279	383	304	2556	8.0	7.5 - 9.5	D	D	73	B	-
20	50	265/50 R20	107H		9.2	774	277	358	302	2361	8.5	7.5 - 9.5	D	D	73	B	-
		285/50 R20	112H		9.4	794	297	366	324	2422	9.0	8.0 - 10.0	D	D	75	B	-



OPEN COUNTRY A/T III



OBSERVE S944



The **OBSERVE S944 SUV** is a winter tire with a directional tread pattern.

It was designed using the Nano-Balance-Technology. The resulting tire construction ensures good grip on wet and wintry roads.



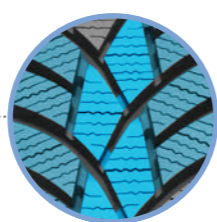
Tire Videos
Observe S944

16 - 19 inch. Speed index H, V and W.

C - E	B - C	69 - 72	A - B	✓	-

Aspect Ratio 50 - 70. Width 215mm - 225mm.

Tread Pattern Features



Stable interconnected centre blocks provide excellent road contact.



The tread blocks feature sipes that run in various directions, allowing a quick water drainage and maintaining optimal road contact.



Directional tread pattern with interconnected deep grooves quickly channel water away and prevent aquaplaning.

OBSERVE S944 SUV

RIM DIA.	ASPECT RATIO	TIRE SIZE	LOAD INDEX SPEED SYMBOL	TREAD DEPTH (mm)	INFLATED DIMENSION		LOADED DIMENSION		ROLLING CIRCUMFERENCE (mm)	MEASURING RIM WIDTH (Inch)	ALTERNATE RIM (Inch)	RRC	Wet	Noise db	ABC Noise	Rim Protector
					OVERALL DIA. (mm)	OVERALL WIDTH (mm)	STATIC RADIUS (mm)	STATIC WIDTH (mm)								
16	70	215/70 R16	104H	8.9	708	221	321	241	2159	6.5	5.5 - 7.0	D	C	71	B	-
	65	215/65 R16	102H	8.8	686	221	312	241	2092	6.5	6.0 - 7.5	D	B	71	B	-
17	65	215/65 R17	103V	8.8	712	221	325	241	2172	6.5	6.0 - 7.5	D	B	71	B	-
		225/65 R17	106H	8.9	724	228	330	249	2208	6.5	6.0 - 8.0	C	B	71	B	-
	60	215/60 R17	100V	8.7	690	221	317	241	2105	6.5	6.0 - 7.5	D	B	71	B	-
		225/60 R17	103V	8.8	702	228	321	249	2141	6.5	6.0 - 8.0	D	B	71	B	-
18	60	225/60 R18	104V	8.8	727	228	334	249	2217	6.5	6.0 - 8.0	D	B	71	B	-
		215/55 R18	99V	8.6	693	226	321	246	2114	7.0	6.0 - 7.5	D	B	71	B	-
	55	225/55 R18	102V	8.7	705	233	325	254	2150	7.0	6.0 - 8.0	D	B	71	B	-
		50	225/50 R18	95W	8.3	683	233	317	254	2083	7.0	6.0 - 8.0	E	B	71	B
19	55	225/55 R19	99V	8.7	731	233	338	254	2230	7.0	6.0 - 8.0	D	B	71	B	-



SNOWPROX S954 SUV



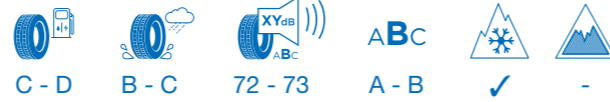
The **SNOWPROX S954 SUV** is a winter tire featuring an asymmetric tread pattern. Its design, combined with an optimised rubber compound, provides excellent grip on wet and icy roads.

M+S marked.



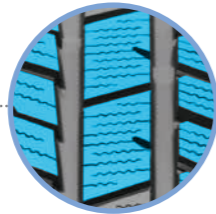
Tire Videos
Snowprox S954

16 - 21 inch. Speed index H, V and W.

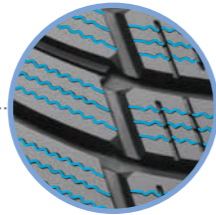


Aspect Ratio 30 - 70. Width 205mm - 325mm.

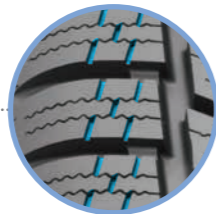
Tread Pattern Features



Tightly spaced tread blocks with many sipes and wide, circumferential tread grooves for optimum water drainage.



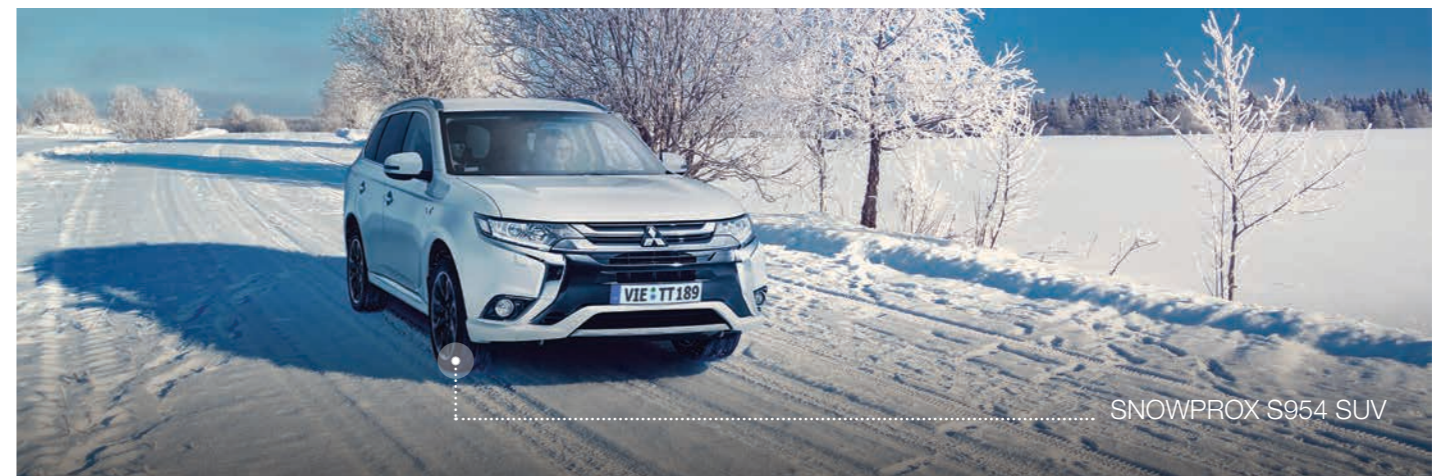
Asymmetrical tread design.



Silica tread compound for optimised rolling resistance and good grip.

SNOWPROX S954 SUV

RIM DIA.	ASPECT RATIO	TIRE SIZE	LOAD INDEX SPEED SYMBOL	TREAD DEPTH (mm)	INFLATED DIMENSION		LOADED DIMENSION		ROLLING CIRCUMFERENCE (mm)	MEASURING RIM WIDTH (Inch)	ALTERNATE RIM (Inch)	RRC	Wet	Noise db	ABC Noise	Rim Protector
					OVERALL DIA. (mm)	OVERALL WIDTH (mm)	STATIC RADIUS (mm)	STATIC WIDTH (mm)								
16	70	255/70 R16	111H	9.0	764	262	298	264	2330	7.5	6.5 - 8.5	D	C	72	B	•
		235/65 R17	104H	8.8	738	240	335	262	2251	7.0	6.5 - 8.5	D	B	72	B	•
17	65	235/65 R17	108V	8.8	738	240	335	262	2251	7.0	6.5 - 8.5	D	C	72	B	•
		255/65 R17	114H	9.0	764	260	345	283	2330	7.5	7.0 - 9.0	D	B	72	B	•
	60	265/65 R17	116H	9.1	776	272	350	296	2367	8.0	7.5 - 9.5	D	C	72	B	•
		235/60 R17	106H	8.8	714	240	326	262	2178	7.0	6.5 - 8.5	C	C	72	B	•
18	60	255/60 R17	110H	9.0	738	260	335	283	2251	7.5	7.0 - 9.0	D	C	72	B	•
		225/60 R18	104H	8.7	727	228	334	249	2217	6.5	6.0 - 8.0	D	C	72	B	•
		235/60 R18	107V	8.8	739	240	339	262	2254	7.0	6.5 - 8.5	C	C	72	B	•
	55	265/60 R18	114H	9.1	775	272	353	296	2364	8.0	7.5 - 9.5	D	C	72	B	•
		235/55 R18	104H	-	-	-	-	-	-	-	6.5 - 8.5	D	C	72	B	•
		255/55 R18	109H	9.0	737	265	338	289	2248	8.0	7.0 - 9.0	C	C	72	B	•
19	50	255/55 R18	109V	9.0	737	265	338	289	2248	8.0	7.0 - 9.0	C	C	72	B	•
		235/50 R18	101V	8.8	693	245	321	267	2114	7.5	6.5 - 8.5	D	C	72	B	•
		205/55 R19	97H	8.5	709	214	330	233	2162	6.5	5.5 - 7.5	D	C	72	B	•
	55	235/55 R19	105V	8.8	741	245	342	267	2260	7.5	6.5 - 8.5	D	C	72	B	•
		265/55 R19	113W	8.6	775	277	355	302	2364	8.5	7.5 - 9.5	D	C	72	B	•
		235/50 R19	103V	8.8	719	245	333	267	2193	7.5	6.5 - 8.5	D	C	72	B	•
45	245/50 R19	105V	8.9	729	253	337	276	2223	7.5	7.0 - 8.5	D	C	72	B	•	
	255/50 R19	107V	9.0	739	265	341	289	2254	8.0	7.0 - 9.0	D	C	72	B	•	
	245/45 R19	102V	8.9	703	243	327	265	2144	8.0	7.5 - 9.0	D	C	72	B	•	
20	55	235/55 R20	105V	8.8	766	245	355	267	2336	7.5	6.5 - 8.5	D	C	72	B	•
		265/50 R20	107V	9.1	774	277	358	302	2361	8.5	7.5 - 9.5	D	C	72	B	•
	45	235/45 R20	100W	8.8	720	236	337	257	2196	8.0	7.5 - 9.0	D	C	72	B	•
		245/45 R20	103V	8.9	728	243	340	265	2220	8.0	7.5 - 9.0	D	C	72	B	•
		255/45 R20	105V	9.0	738	255	358	278	2251	8.5	8.0 - 9.5	D	C	72	B	•
	40	265/45 R20	108V	9.1	746	266	347	290	2275	9.0	8.5 - 10.0	D	C	72	B	•
		275/45 R20	110V	9.2	756	273	351	298	2306	9.0	8.5 - 10.5	D	C	72	B	•
	35	285/45 R20	112V	9.3	764	285	354	311	2330	9.5	9.0 - 10.5	D	C	72	A	•
		275/40 R20	106V	9.2	728	278	353	303	2220	9.5	9.0 - 11.0	D	C	72	B	•
	40	285/40 R20	108V	9.3	736	290	343	316	2245	10.0	9.5 - 11.0	D	C	72	A	•
295/40 R20		110V	9.4	744	301	346	328	2269	10.5	10.0 - 11.5	D	C	72	A	•	
21	35	315/35 R20	106V	9.6	728	320	340	349	2220	11.0	10.5 - 12.5	D	C	72	A	•
		265/40 R21	105V	9.1	745	271	349	295	2272	9.5	9.0 - 10.5	D	C	72	B	•
	30	295/35 R21	107V	9.4	739	301	347	328	2254	10.5	10.0 - 11.5	D	C	72	A	•
30	30	325/30 R21	108V	9.6	729	331	343	361	2223	11.5	11.0 - 12.0	D	C	73	B	•





OBSERVE GSi-6



The **OBSERVE GSi-6** tire is a passenger car and SUV winter tire that has been specially developed for the Nordic regions, where the extreme winter temperatures create icy and snow-covered roads. The special rubber compound of the GSi-6 tire has been precisely matched to these extreme conditions.

Small pieces of walnut shell are mixed into the tire's rubber compound to provide additional grip on the road surface.

M+S marked.



Tire Videos
Observe GSi-6

16 - 22 inch. Speed index H and V.



Aspect Ratio 35 - 75. Width 215mm - 315mm.

Tread Pattern Features



A circumferential, centre tread block with fine sipes ensures good traction on snow with its edge effect.



The 360° sipes, which give the tread block a special honeycomb structure with small, transverse grooves, improve grip on snow and icy roads.



A circumferential, wave-shaped sipe runs through the entire centre tread block and also drains water to improve contact with the road in winter.

OBSERVE GSi-6 SUV

RIM DIA.	ASPECT RATIO	TIRE SIZE	LOAD INDEX	SPEED SYMBOL	TREAD DEPTH (mm)	INFLATED DIMENSION		LOADED DIMENSION		ROLLING CIRCUMFERENCE (mm)	MEASURING RIM WIDTH (Inch)	ALTERNATE RIM (Inch)	RRC	Wet	Noise db	ABC Noise	Rim Protector
						OVERALL DIA. (mm)	OVERALL WIDTH (mm)	STATIC RADIUS (mm)	STATIC WIDTH (mm)								
16	75	225/75 R16	104H	10.0	744	223	335	243	2269	6.0	6.0 - 7.5	E	E	69	A	•	
		245/75 R16	111H	10.2	774	248	347	270	2361	7.0	6.5 - 8.0	E	E	69	A	•	
		265/75 R16	116H	10.4	804	267	358	291	2452	7.5	7.0 - 9.0	E	E	72	B	•	
	70	215/70 R16	100H	9.8	708	221	321	241	2159	6.5	5.5 - 7.0	E	E	69	A	•	
		225/70 R16	103H	9.9	722	228	326	249	2202	6.5	6.0 - 7.5	E	E	69	A	•	
		235/70 R16	106H	10.0	736	240	332	262	2245	7.0	6.0 - 8.0	E	E	69	A	•	
	65	265/70 R16	112H	10.3	778	272	348	296	2373	8.0	7.0 - 9.0	E	E	72	B	•	
		215/65 R16	98H	9.7	686	221	312	241	2092	6.5	6.0 - 7.5	E	E	69	A	•	
		225/65 R16	100H	9.8	698	228	317	249	2129	6.5	6.0 - 8.0	E	E	69	A	•	
	60	235/60 R16	100H	9.8	688	240	313	262	2098	7.0	6.5 - 8.5	E	E	69	A	•	
	17	70	215/70 R17	101H	9.8	734	221	334	241	2239	6.5	5.5 - 7.0	E	E	69	A	•
			245/70 R17	110H	10.1	776	248	350	270	2367	7.0	6.5 - 8.0	E	E	69	A	•
265/70 R17			115H	10.3	804	272	361	296	2452	8.0	7.0 - 9.0	E	E	72	B	•	
65		285/70 R17	117H	10.5	830	292	371	318	2530	8.5	7.5 - 9.5	E	E	73	B	•	
		215/65 R17	99H	9.7	712	221	325	241	2172	6.5	6.0 - 7.5	E	E	69	A	•	
		225/65 R17	102H	9.8	724	228	330	249	2208	6.5	6.0 - 8.0	E	E	69	A	•	
60		235/65 R17	104H	9.9	738	240	335	262	2251	7.0	6.5 - 8.5	E	E	69	A	•	
		245/65 R17	107H	10.0	750	248	340	270	2288	7.0	7.0 - 8.5	E	E	69	A	•	
		255/65 R17	114H	10.1	764	260	345	283	2330	7.5	7.0 - 9.0	E	E	72	B	•	
55		265/65 R17	112H	10.2	776	272	350	296	2367	8.0	7.5 - 9.5	E	E	72	B	•	
		215/60 R17	96H	9.7	690	221	317	241	2105	6.5	6.0 - 7.5	E	E	69	A	•	
		225/60 R17	99H	9.7	702	228	321	249	2141	6.5	6.0 - 8.0	E	E	69	A	•	
18	70	235/60 R17	102H	9.8	714	240	326	262	2178	7.0	6.5 - 8.5	E	E	69	A	•	
		235/55 R17	99H	9.7	690	245	317	267	2105	7.5	6.5 - 8.5	E	E	69	A	•	
		255/70 R18	113H	10.2	815	260	368	283	2486	7.5	6.5 - 8.5	E	E	72	B	•	
	65	265/70 R18	116H	10.3	829	272	374	296	2528	8.0	7.0 - 9.0	E	E	72	B	•	
		235/65 R18	106H	9.9	763	240	348	262	2327	7.0	3.5 - 8.5	E	E	69	A	•	
		255/65 R18	111H	10.1	789	260	358	283	2406	7.5	7.0 - 9.0	E	E	72	B	•	
	60	265/65 R18	114H	10.2	801	272	363	296	2443	8.0	7.5 - 9.5	E	E	72	B	•	
		275/65 R18	116H	10.3	815	279	368	304	2486	8.0	7.5 - 9.5	E	E	72	B	•	
		225/60 R18	100H	9.7	727	228	334	249	2217	6.5	6.0 - 8.0	E	E	69	A	•	
	55	235/60 R18	107H	9.8	739	240	339	262	2254	7.0	6.5 - 8.5	E	E	69	A	•	
		245/60 R18	105H	9.9	751	248	343	270	2291	7.0	7.0 - 8.5	E	E	69	A	•	
		255/60 R18	112H	10.0	763	260	348	283	2327	7.5	7.0 - 9.0	E	E	72	B	•	
19	60	265/60 R18	110H	10.1	775	272	353	296	2364	8.0	7.0 - 9.5	E	E	72	B	•	
		215/55 R18	95H	9.6	693	226	321	246	2114	7.0	6.0 - 7.5	E	E	69	A	•	
		225/55 R18	98H	9.7	705	233	325	254	2150	7.0	6.0 - 8.0	E	E	69	A	•	
	55	235/55 R18	100H	9.7	715	245	329	267	2181	7.5	6.5 - 8.5	E	E	69	A	•	
		255/55 R18	109H	9.9	737	265	338	289	2248	8.0	7.0 - 9.0	E	E	72	B	•	
		235/50 R18	97H	9.7	693	245	321	267	2114	7.5	6.5 - 8.5	E	E	69	A	•	
	50	255/60 R19	113H	10.0	789	260	361	283	2406	7.5	7.0 - 9.0	E	E	72	B	•	
		225/55 R19	99H	9.7	731	233	338	254	2230	7.0	6.0 - 8.0	E	E	69	A	•	
		235/55 R19	101H	9.7	741	245	342	267	2260	7.5	6.5 - 8.5	E	E	69	A	•	
	45	245/55 R19	103H	9.8	753	253	347	276	2297	7.5	7.0 - 8.5	E	E	69	A	•	
		255/55 R19	111H	9.9	763	261	351	284	2328	8.0	7.0 - 9.0	E	E	72	B	•	
		265/55 R19	113V	9.8	775	277	355	302	2364	8.5	7.5 - 9.5	E	E	72	B	•	
40	235/50 R19	103H	9.7	720	240	334	261	2196	7.5	6.5 - 8.5	E	E	69	A	•		
	245/50 R19	105H	9.8	729	253	337	276	2223	7.5	7.0 - 8.5	E	E	69	A	•		
	255/50 R19	107H	9.8	739	265	341	289	2254	8.0	7.0 - 9.0	E	E	72	B	•		
20	60	265/50 R19	110H	9.9	749	277	345	302	2284	8.5	7.5 - 9.5	E	E	73	B	•	
		275/60 R20	115H	10.2	838	279	383	304	2556	8.0	7.5 - 9.5	E	E	72	B	•	
		235/55 R20	102H	9.7	766	245	355	267	2336	7.5	6.5 - 8.5	E	E	69	A	•	
	55	255/55 R20	110H	9.9	788	265	363	289	2403	8.0	7.0 - 9.0	E	E	72	B	•	
		265/55 R20	113H	10.0	800	277	368	302	2440	8.5	7.5 - 9.5	E	E	73	B	•	
		235/50 R20	104V	9.5	744	245	346	267	2269	7.5	6.5 - 8.5	E	E	69	A	•	
	50	245/50 R20	102H	9.7	754	253	350	276	2300	7.5	7.0 - 8.5	E	E	72	B	•	
		255/50 R20	109H	9.8	764	265	354	289	2330	8.0	7.0 - 9.0	E	E	72	B	•	
		265/50 R20	111H	9.9	774	277	358	302	2361	8.5	7.5 - 9.5	E	E	72	B	•	
	45	275/50 R20	113H	10.0	784	284	362	310	2391	8.5	7.5 - 9.5	E	E	73	B	•	
		285/50 R20	116H	10.1	794	297	366	324	2422	9.0	8.0 - 10.0	E	E	73	B	•	
		255/45 R20	105H	9.7	738	255	344	278	2251	8.5	8.0 - 9.5	E	E	72	B	•	
40	275/45 R20	110V	9.7	756	273	351	298	2306	9.0	8.5 - 10.5	E	E	73	B	•		
	275/40 R20	106H	9.7	732	271	341	295	2232	9.5	9.0 - 11.0	E	E	73	B	•		
	35	315/35 R20	110V	9.3	728	320	340	349	2220	11.0	10.5 - 12.5	E	E	73	B	•	
21	45	275/45 R21	107V	9.7	781	273	363	298	2382	9.0	8.5 - 10.5	E	E	73	B	•	
	40	295/40 R21	111V	9.2	769	301	359	328	2345	10.5	10.0 - 11.5	E	E	75	B	•	
	35	315/35 R21	111H	9.5	753	320	352	349	2297	11.0	10.5 - 12.5	E	E	73	B	•	
22	45	275/45 R22	112H	9.7	781	273	363	298	2382	9.0	8.5 - 10.5	E	E	73	B	•	
		285/45 R22	114H	10.0	815	285	379	311	2486	9.5	9.0 - 10.5	E	E	73	B	•	
	40	275/40 R22	107V	9.0	779	278	365	303	2376	9.5	9.0 - 11.0	E	E	73	B	•	



OBSERVE ICE-FREEZER SUV



The **OBSERVE ICE-FREEZER** is a passenger car and SUV winter tire which has been specially developed for the extreme temperatures and weather conditions of the Nordic countries.

The tire has a directional tread pattern. Its special rubber compound and the additional studs in the tread provide good grip on snowy and icy roads.



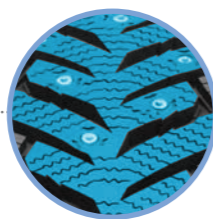
Tire Videos
Observe Ice-Freezer

16 - 20 inch. Speed index T and H.



Aspect Ratio 50 - 70. Width 215mm - 265mm.

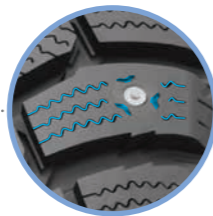
Tread Pattern Features



The tree shaped centre tread block improves traction and braking performance. The tree shaped centre tread block improves traction and braking performance on ice and snow.



The tread pattern has many sipes and grooves on the tire shoulder, which drain water away quickly so that the tire maintains good contact with the road surface in winter.



The spikes in the tread blocks provide additional grip on icy and snow-covered roads.

OBSERVE ICE-FREEZER SUV

RIM DIA.	ASPECT RATIO	TIRE SIZE	LOAD INDEX SPEED SYMBOL	TREAD DEPTH (mm)	INFLATED DIMENSION		LOADED DIMENSION		ROLLING CIRCUMFERENCE (mm)	MEASURING RIM WIDTH (Inch)	ALTERNATE RIM (Inch)	RRC	Wet	Noise db	ABC Noise	Rim Protector
					OVERALL DIA. (mm)	OVERALL WIDTH (mm)	STATIC RADIUS (mm)	STATIC WIDTH (mm)								
16	70	215/70 R16	100T	9.3	708	221	321	241	2159	6.5	5.5 - 7.0	-	-	-	-	•
	65	215/65 R16	98T	9.8	686	221	312	241	2092	6.5	6.0 - 7.5	-	-	-	-	•
17		215/65 R17	103T	-	-	-	-	-	-	-	6.0 - 7.5	-	-	-	-	•
	65	225/65 R17	106T	9.8	724	228	330	249	2208	6.5	6.0 - 8.0	-	-	-	-	•
		235/65 R17	108T	10.3	738	240	335	262	2251	7.0	6.5 - 8.5	-	-	-	-	•
	60	215/60 R17	100T	8.8	690	221	317	241	2105	6.5	6.0 - 7.5	-	-	-	-	•
18		225/60 R17	103T	9.7	702	228	321	249	2141	6.5	6.0 - 8.0	-	-	-	-	•
		225/60 R18	100T	9.7	727	228	334	249	2217	6.5	6.0 - 8.0	-	-	-	-	•
	60	235/60 R18	107T	10.2	739	240	339	262	2254	7.0	6.5 - 8.5	-	-	-	-	•
		265/60 R18	114T	10.7	775	272	353	296	2364	8.0	7.5 - 9.5	-	-	-	-	•
19	55	225/55 R18	102T	8.9	705	233	325	254	2150	7.0	6.0 - 8.0	-	-	-	-	•
	55	235/55 R19	105H	9.0	741	245	342	267	2260	7.5	6.5 - 8.5	-	-	-	-	•
20	50	255/50 R19	107T	9.2	739	265	341	289	2254	8.0	7.0 - 9.0	-	-	-	-	•
	50	255/50 R20	109T	9.2	764	265	354	289	2330	8.0	7.0 - 9.0	-	-	-	-	•



OBSERVE ICE-FREEZER SUV



VAN/LIGHT TRUCK TIRES

OBSERVE ICE-FREEZER VAN

CELSIUS CARGO

NANOENERGY VAN

OBSERVE VAN



OBSERVE ICE-FREEZER VAN



The **OBSERVE ICE-FREEZER** is a winter van tire which has been specially developed for the extreme temperatures and weather conditions of the Nordic countries.

The tire has a directional tread pattern. Its special rubber compound and the additional studs in the tread provide good grip on snowy and icy roads.

M+S marked.



15 - 17 inch. Speed index R.



Aspect Ratio 60 - 75. Width 185mm - 235mm.

Tread Pattern Features



Designed with a tree-shaped central tread block, this tire enhances traction and braking performance, especially on ice and snow.

With multiple sipes and grooves on the tire shoulder, the tread design ensures rapid water dispersion, maintaining strong road contact in winter conditions.

The pentagon-shaped spikes in the tread blocks provide additional grip and traction on icy and snow-covered roads.

OBSERVE ICE-FREEZER VAN

RIM DIA.	ASPECT RATIO	TIRES SIZE	LOAD INDEX	SPEED SYMBOL	TREAD DEPTH (mm)	INFLATED DIMENSION		LOADED DIMENSION		ROLLING CIRCUMFERENCE (mm)	MEASURING RIM WIDTH (Inch)	ALTERNATE RIM (Inch)	RRC	Wet	Noise db	ABC Noise	Rim Protector
						OVERALL DIA. (mm)	OVERALL WIDTH (mm)	STATIC RADIUS (mm)	STATIC WIDTH (mm)								
15	70	195/70 R15	104	102R	9.8	655	201	297	219	1998	6.0	5.0 - 6.5	E	E	72	B	-
		215/70 R15	109	107R	9.8	683	221	308	241	2083	6.5	5.5 - 7.0	E	E	72	B	-
		225/70 R15	112	110R	9.8	697	228	314	249	2126	6.5	6.0 - 7.5	E	E	72	B	-
16	75	185/75 R16	104	102R	9.8	684	184	311	201	2086	5.0	5.0	E	E	72	B	-
		195/75 R16	107	105R	9.8	698	196	317	214	2129	5.5	5.0 - 6.5	E	E	72	B	-
		205/75 R16	113	111R	9.8	714	203	323	221	2178	5.5	5.5	E	E	72	B	-
		215/75 R16	113	111R	9.8	728	216	329	235	2220	6.0	5.5 - 7.0	E	E	72	B	-
16	65	225/75 R16	121	120R	9.8	744	223	335	243	2269	6.0	6.0 - 7.5	E	E	72	B	-
		205/65 R16	107	105R	9.8	672	209	307	228	2050	6.0	5.5 - 7.5	E	E	72	B	-
		215/65 R16	109	107R	9.8	686	221	312	241	2092	6.5	6.0 - 7.5	E	E	72	B	-
		225/65 R16	112	110R	9.8	698	228	317	249	2129	6.5	6.0 - 8.0	E	E	72	B	-
		235/65 R16	121	119R	-	-	-	-	-	-	-	6.5 - 8.5	E	E	72	B	-
17	60	215/60 R17	109	107R	9.8	690	221	317	241	2105	6.5	6.0 - 7.5	E	E	72	B	-
		235/60 R17	117	115R	9.8	714	240	326	262	2178	7.0	6.5 - 8.5	E	E	72	B	-



OBSERVE ICE-FREEZER VAN



CELSIUS CARGO



The **CELSIUS CARGO** features an innovative asymmetrical tread pattern, making it suitable for both summer and winter driving.

Its winter performance is certified by the 3PMSF (snowflake symbol) displayed on the sidewall, ensuring reliable traction in snowy conditions.

Designed for optimal grip and performance, the advanced tread and rubber compound provide excellent handling on both dry and wet roads.

M+S marked.



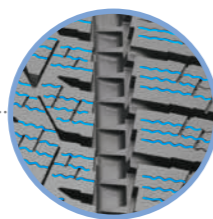
Tire Videos
Celsius Cargo

14 - 17 inch. Speed index R, S, T and H.

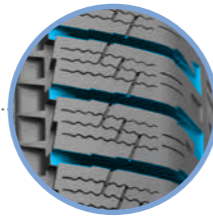


Aspect Ratio 55 - 75. Width 175mm - 235mm.

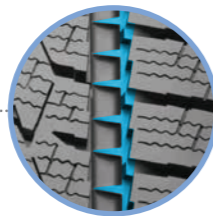
Tread Pattern Features



The asymmetrical profile design uses fine sipes within the tread blocks to rapidly channel water away and provide excellent traction.



Wide grooves between the tread blocks support water and mud drainage and improve wet grip.



Small rubber strips between the tread blocks enhance winter road traction, gripping snowy surfaces securely like claws.

CELSIUS CARGO

RIM DIA.	ASPECT RATIO	TIRE SIZE	LOAD INDEX SPEED SYMBOL	TREAD DEPTH (mm)	INFLATED DIMENSION		LOADED DIMENSION		ROLLING CIRCUMFERENCE (mm)	MEASURING RIM WIDTH (Inch)	ALTERNATE RIM (Inch)	RRC	Wet	Noise db	ABC Noise	Rim Protector
					OVERALL DIA. (mm)	OVERALL WIDTH (mm)	STATIC RADIUS (mm)	STATIC WIDTH (mm)								
14	70	175/70 R14	95/93T	9.7	602	177	274	193	1836	5.0	4.5 - 6.0	E	C	72	B	-
		195/70 R15	104/102S	10.0	655	201	297	219	1998	6.0	5.0 - 6.5	D	C	72	B	-
15	70	205/70 R15	106/104T	9.9	669	209	303	228	2040	6.0	5.0 - 7.0	E	C	72	B	-
		215/70 R15	109/107S	10.2	683	221	308	241	2083	6.5	5.5 - 7.0	D	C	72	B	-
		225/70 R15	112/110S	10.3	697	228	314	249	2126	6.5	6.0 - 7.5	D	C	72	B	-
		215/65 R15	104/102T	9.9	603	189	277	206	1839	5.5	6.0 - 7.5	D	C	72	B	-
60	185/60 R15	94/92T	9.6	661	221	300	241	2016	6.5	5.0 - 6.5	E	C	72	B	-	
		185/75 R16	104/102R	10.0	684	184	311	201	2086	5.0	4.5 - 6.0	E	C	72	B	-
75	195/75 R16	110/108T	10.1	698	196	317	214	2129	5.5	5.0 - 6.5	D	C	72	B	-	
		205/75 R16	113/111R	10.2	714	203	323	221	2178	5.5	5.0 - 7.0	D	C	72	B	-
		215/75 R16	116/114T	10.1	728	216	329	235	2220	6.0	5.5 - 7.0	D	C	72	B	-
		225/75 R16	121/120T	10.4	744	223	335	243	2269	6.0	6.0 - 7.5	C	C	72	B	-
16	195/65 R16	104/102T	9.7	660	201	302	219	2013	6.0	5.5 - 7.0	E	C	72	B	-	
		205/65 R16	107/105T	9.8	672	209	307	228	2050	6.0	5.5 - 7.5	D	C	72	B	-
		215/65 R16	109/107T	9.9	686	221	312	241	2092	6.5	6.0 - 7.5	D	C	72	B	-
		225/65 R16	112/110T	10.0	698	228	317	249	2129	6.5	6.0 - 8.0	D	C	72	B	-
65	235/65 R16	115/113T	10.3	712	240	322	262	2172	7.0	6.5 - 8.5	D	C	72	B	-	
		121/119R	10.3	712	240	322	262	2172	7.0	6.5 - 8.5	C	C	72	B	-	
		195/60 R16	99/97H	9.5	640	201	294	219	1952	6.0	5.5 - 7.0	E	C	72	B	-
		215/60 R16	103/101T	9.8	664	221	304	241	2025	6.5	6.0 - 7.5	E	C	72	B	-
60	215/60 R17	109/107T	9.8	690	221	317	241	2105	6.5	6.0 - 7.5	E	C	72	B	-	
		235/60 R17	117/115T	10.0	714	240	326	262	2178	7.0	6.5 - 8.5	D	C	72	B	-
17	60	225/55 R17	109/107H	9.7	680	233	313	254	2074	7.0	6.0 - 8.0	E	C	72	B	-



CELSIUS CARGO

VAN/LIGHT TRUCK TIRES

NANOENERGY VAN



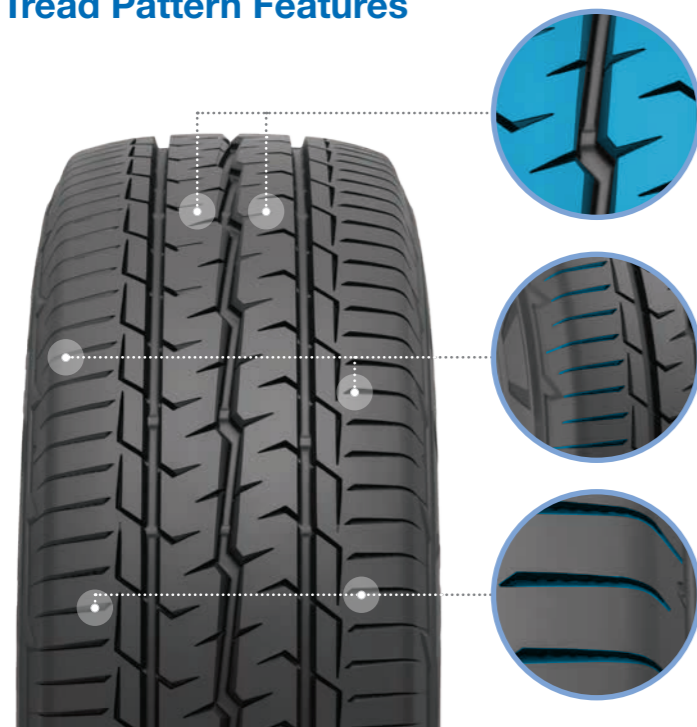
The **NANOENERGY VAN** is a reliable and economical summer tire for vans, offering shorter braking distances, enhanced stability, and a reinforced carcass for durability. Lower fuel consumption ensures cost-effective performance.

13 - 17 inch. Speed index Q, R, S, T and H.



Aspect Ratio 55 - 75. Width 165mm - 235mm.

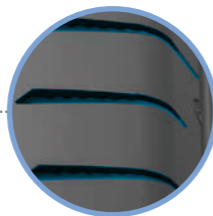
Tread Pattern Features



High rib stiffness and less wear through double zigzag ribs.



The 3D Multi wave sipes decrease the block movement for better cornering behaviour.



Dynamic Taper guarantees enhanced traction to the road surface.

NANOENERGY VAN

RIM DIA.	ASPECT RATIO	TIRE SIZE	LOAD INDEX	SPEED SYMBOL	TREAD DEPTH (mm)	INFLATED DIMENSION		LOADED DIMENSION		ROLLING CIRCUMFERENCE (mm)	MEASURING RIM WIDTH (Inch)	ALTERNATE RIM (Inch)	RRC	Wet	Noise db	ABC Noise	Rim Protector
						OVERALL DIA. (mm)	OVERALL WIDTH (mm)	STATIC RADIUS (mm)	STATIC WIDTH (mm)								
13	70	165/70 R13	88	86R	8.0	562	170	256	185	1714	5.0	4.0 - 5.5	D	C	70	B	-
	75	185/75 R14	102	100S	9.0	634	184	286	201	1934	5.0	4.5 - 6.0	D	B	70	B	-
	70	165/70 R14	89	87R	8.0	588	170	268	185	1793	5.0	4.0 - 5.5	D	C	70	B	-
14	65	175/65 R14	95	93T	8.0	602	177	274	193	1836	5.0	4.5 - 6.0	D	C	70	B	-
		175/65 R14	90	88T	8.0	584	177	267	193	1781	5.0	5.0 - 6.0	D	B	70	B	-
	70	175/ R14	99	98S	9.0	634	178	286	194	1934	5.0	5.0	D	C	70	B	-
		185/ R14	102	100S	9.0	650	188	293	205	1983	6.0	6.0	D	B	70	B	-
		195/ R14	106	104S	9.0	666	198	299	216	2031	6.0	6.0	C	B	70	B	-
		205/ R14	109	107S	9.0	686	208	307	227	2092	6.0	6.0	C	B	70	B	-
15	75	215/ R14	112	110S	9.0	700	218	312	238	2135	6.0	6.0	C	B	70	B	-
		225/75 R15	110	108Q	9.0	719	223	322	243	2193	6.0	6.0 - 7.5	C	B	70	B	-
		195/70 R15	104	102S	9.0	655	201	297	219	1998	6.0	5.0 - 6.5	D	C	70	B	-
	70	205/70 R15	106	104S	9.0	669	209	303	228	2040	6.0	5.0 - 7.0	C	C	70	B	-
		215/70 R15	109	107S	9.0	683	221	308	241	2083	7.0	5.5 - 7.0	C	C	70	B	-
		225/70 R15	112	110S	9.0	697	228	314	249	2126	7.0	6.0 - 7.5	C	C	70	B	-
	65	205/65 R15	102	100T	9.0	647	209	294	228	1973	6.0	5.5 - 7.5	D	B	70	B	-
		215/65 R15	104	102T	9.0	661	221	300	241	2016	7.0	6.0 - 7.5	D	B	70	B	-
		185/ R15	103	102R	9.0	674	188	305	205	2056	6.0	6.0	D	B	70	B	-
16	75	195/ R15	106	104S	9.0	690	198	311	216	2105	6.0	6.0	C	B	70	B	-
		175/75 R16	101	99S	9.0	668	177	305	193	2037	5.0	5.0	D	B	70	B	-
		185/75 R16	104	102S	9.0	684	184	311	201	2086	5.0	5.0	D	B	70	B	-
	70	195/75 R16	107	105T	9.0	698	196	317	214	2129	6.0	5.0 - 6.5	C	B	70	B	-
		195/75 R16	110	108R	9.0	698	196	317	214	2129	6.0	5.0 - 6.5	C	B	70	B	-
		205/75 R16	113	111R	9.0	714	203	323	221	2178	6.0	6.0	C	B	70	B	-
	60	215/75 R16	116	114R	9.0	728	216	329	235	2220	6.0	5.5 - 7.0	C	B	70	B	-
		225/75 R16	121	120R	9.0	744	223	335	243	2269	6.0	6.0 - 7.5	C	B	70	B	-
		215/70 R16	108	106T	9.0	708	221	321	241	2159	7.0	5.5 - 7.0	C	C	70	B	-
65		195/65 R16	104	102T	8.0	660	201	302	219	2013	6.0	5.5 - 7.0	D	B	70	B	-
		205/65 R16	107	105T	9.0	672	209	307	228	2050	6.0	5.5 - 7.5	C	B	70	B	-
		215/65 R16	109	107T	9.0	686	221	312	241	2092	7.0	6.0 - 7.5	C	B	70	B	-
60	225/65 R16	112	110T	9.0	698	228	317	249	2129	7.0	6.0 - 8.0	C	B	70	B	-	
	235/65 R16	115	113S	9.0	712	240	322	262	2172	7.0	6.5 - 8.5	C	B	70	B	-	
	235/65 R16	121	119S	9.0	712	240	322	262	2172	7.0	6.5 - 8.5	C	B	70	B	-	
17	60	195/60 R16	99	97H	8.0	640	201	294	219	1952	6.0	5.5 - 7.0	D	C	70	B	-
		215/60 R16	103	101T	9.0	664	221	304	241	2025	7.0	6.0 - 7.5	D	C	70	B	-
	225/60 R16	111	109T	9.0	676	228	308	249	2062	7.0	6.0 - 8.0	C	C	70	B	-	
55	215/60 R17	109	107T	9.0	690	221	317	241	2105	7.0	6.0 - 7.5	C	C	70	B	-	
	235/60 R17	117	115R	9.0	714	240	326	262	2178	7.0	6.5 - 8.5	C	C	70	B	-	
225/55 R17	109	107H	8.0	680	233	313	254	2074	7.0	6.0 - 8.0	C	C	70	B	-		

OBSERVE VAN



T-MODE

OBSERVE VAN is the van tire for normal winter conditions, offering a symmetrical tread pattern and a special rubber compound, designed with Nano-Balance-Technology.

The optimised tread block design provides excellent mileage and reliable grip on wet and winter roads. The reinforced carcass ensures durability, making it a robust choice for vans.

M+S marked.

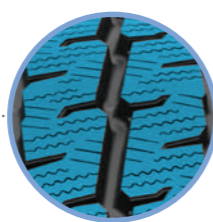
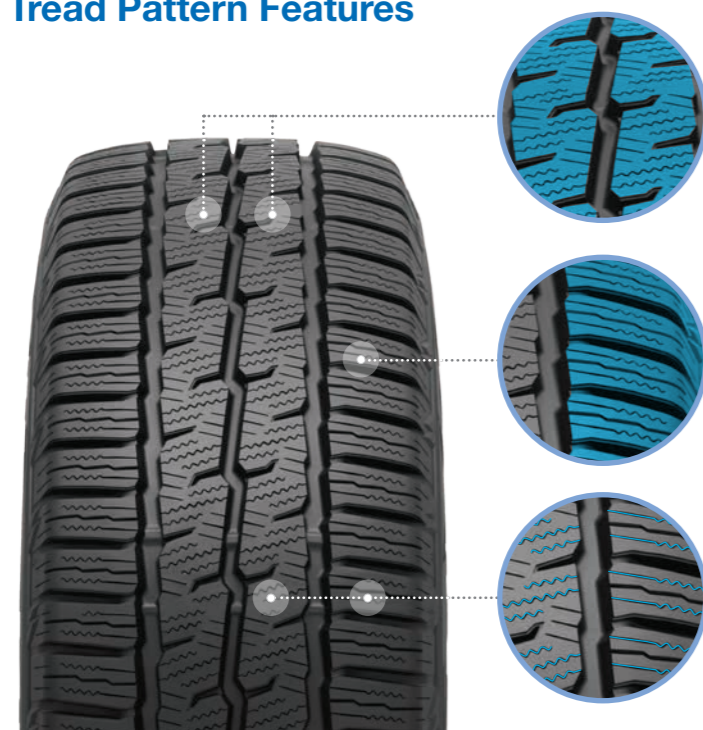


14 - 17 inch. Speed index R, S, T and H.

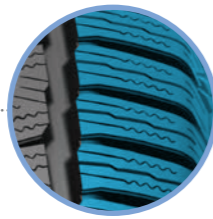
C - E	B - C	72	B	-	-

Aspect Ratio 55 - 75. Width 165mm - 235mm.

Tread Pattern Features



Wave-shaped centre profile blocks enhance rib stiffness and improve edge performance for reliable traction on winter roads.



Wide shoulder blocks with enhanced stiffness provide maximal road contact and reduced wear.



3D multi-wave sipes drain water quickly and reduce the risk of aquaplaning.

OBSERVE VAN

RIM DIA.	ASPECT RATIO	TIRES SIZE	LOAD INDEX	SPEED SYMBOL	TREAD DEPTH (mm)	INFLATED DIMENSION		LOADED DIMENSION		ROLLING CIRCUMFERENCE (mm)	MEASURING RIM WIDTH (Inch)	ALTERNATE RIM (Inch)	RRC	Wet	Noise db	ABC Noise	Rim Protector
						OVERALL DIA. (mm)	OVERALL WIDTH (mm)	STATIC RADIUS (mm)	STATIC WIDTH (mm)								
75		185/75 R14	102	100S	10.0	634	184	286	201	1934	5.0	4.5 - 6.0	D	C	72	B	-
		195/75 R14	106	104S	10.1	648	196	292	214	1976	5.5	5.0 - 6.5	D	C	72	B	-
70		165/70 R14	89	87R	9.3	588	170	268	185	1793	5.0	4.0 - 5.5	D	C	72	B	-
		175/70 R14	95	93T	9.0	602	177	274	193	1836	5.0	4.5 - 6.0	D	C	72	B	-
65		175/65 R14	90	88T	9.6	584	177	267	193	1781	5.0	5.0 - 6.0	D	B	72	B	-
		175/ R14	99	98S	10.0	634	178	286	194	1934	5.0	5.0	D	C	72	B	-
14	0	185/ R14	102	100S	9.7	650	188	293	205	1983	5.5	5.5	D	C	72	B	-
		195/ R14	106	104S	10.2	666	198	299	216	2031	5.5	5.5	D	C	72	B	-
14	0	195/ R14	110	108S	9.7	666	198	299	216	2031	5.5	5.5	E	C	72	B	-
		205/ R14	109	107S	10.3	686	208	307	227	2092	6.0	6.0	D	C	72	B	-
14	0	215/ R14	112	110S	10.4	700	218	312	238	2135	6.0	6.0	D	C	72	B	-
		195/70 R15	104	102S	10.0	655	201	297	219	1998	6.0	5.0 - 6.5	D	C	72	B	-
15	70	205/70 R15	106	104S	10.1	669	209	303	228	2040	6.0	5.0 - 7.0	D	C	72	B	-
		215/70 R15	109	107S	10.2	683	221	308	241	2083	6.5	5.5 - 7.0	D	C	72	B	-
15	65	225/70 R15	112	110S	10.3	697	228	314	249	2126	6.5	6.0 - 7.5	D	C	72	B	-
		205/65 R15	102	100T	9.8	647	209	294	228	1973	6.0	5.5 - 7.5	D	B	72	B	-
15	65	215/65 R15	104	102T	9.3	661	221	300	241	2016	6.5	6.0 - 7.5	D	B	72	B	-
		175/75 R16	101	99SS	9.9	668	177	305	193	2037	5.0	5.0	D	C	72	B	-
15	75	185/75 R16	104	102S	10.0	684	184	311	201	2086	5.0	5.0	D	C	72	B	-
		195/75 R16	110	108R	10.1	698	196	317	214	2129	5.5	5.0 - 6.5	D	C	72	B	-
15	75	205/75 R16	113	111R	10.2	714	203	323	221	2178	5.5	5.5	D	C	72	B	-
		215/75 R16	116	114R	10.3	728	216	329	235	2220	6.0	5.5 - 7.0	C	C	72	B	-
15	75	225/75 R16	121	120R	9.8	744	223	335	243	2269	6.0	6.0 - 7.5	C	C	72	B	-
		195/65 R16	104	102T	9.7	660	201	302	219	2013	6.0	5.5 - 7.0	D	B	72	B	-
16	65	205/65 R16	107	105T	9.8	672	209	307	228	2050	6.0	5.5 - 7.5	D	B	72	B	-
		215/65 R16	109	107T	9.3	686	221	312	241	2092	6.5	6.0 - 7.5	D	B	72	B	-
16	65	225/65 R16	112	110T	10.0	698	228	317	249	2129	6.5	6.0 - 8.0	D	B	72	B	-
		235/65 R16	115	113S	10.3	712	240	322	262	2172	7.0	6.5 - 8.5	C	B	72	B	-
16	65	235/65 R16	121	119S	10.3	712	240	322	262	2172	7.0	6.5 - 8.5	C	B	72	B	-
		195/60 R16	99	97H	9.5	640	201	294	219	1952	6.0	5.5 - 7.0	D	C	72	B	-
16	60	205/60 R16	100	98T	9.7	652	209	299	228	1989	6.0	5.5 - 7.5	D	C	72	B	-
		215/60 R16	103	101T	9.8	664	221	304	241	2025	6.5	6.0 - 7.5	D	C	72	B	-
16	60	225/60 R16	111	109T	9.9	676	228	308	249	2062	6.5	6.0 - 8.0	D	C	72	B	-
		215/60 R17	109	107T	9.8	690	221	317	241	2105	6.5	6.0 - 7.5	D	C	72	B	-
17	60	235/60 R17	117	115R	9.8	714	240	326	262	2178	7.0	6.5 - 8.5	C	C	72	B	-
		225/55 R17	109	107H	9.7	680	233	313	254	2074	7.0	6.0 - 8.0	D	C	72	B	-



OBSERVE VAN



COMPETITION TIRES

PROXES R888R



PROXES R888R



PROXES R888R is a semi-slick sports tire with an asymmetrical tread pattern.

The tire is certified for street use, making it suitable for both road and track driving. It provides excellent dry grip and responsive steering characteristics.

CAUTION:
The rubber compounds used in these tires have unique properties that can cause them to lose some of their flexibility when used or handled in temperatures below -9°C. This loss in flexibility can lead to potential cracking and other damage to the tire.

To minimise the chances of this happening, consumers and installers are advised to follow the instructions below:

- Do not move or operate a vehicle fitted with these tires in temperatures below -9°C.
- Avoid moving these tires in temperatures below -9°C
- Before mounting or dismounting, store these tires for at least 24 hours in a temperature controlled environment of 20°C or warmer and always inspect for signs of cracking before mounting. Never use tires that have cracked.
- Remove the wheels from the vehicle and deflate the tires to half the normal air pressure during prolonged periods of inactivity or for storage.
- Aquaplaning and wear are good for a competition tire but are inferior to a normal road tire. Because of this, PROXES R888R is not recommended for everyday road use.

For best performance, PROXES R888R should be changed after two seasons maximum, irrespective of wear.



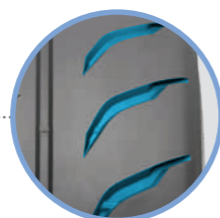
Tire Videos
Proxes R888R

13 - 20 inch. Speed index V, W and Y.



Aspect Ratio 30 - 60. Width 185mm - 315mm.

Tread Pattern Features



Shallow tread grooves and wide tread blocks on the tire's outer shoulder offer exceptional handling on dry roads.



Short, shallow tread grooves on the inner shoulder provide excellent steering stability.

PROXES R888R

RIM DIA.	ASPECT RATIO	TIRE SIZE	LOAD INDEX SPEED SYMBOL	TREAD DEPTH (mm)	INFLATED DIMENSION		LOADED DIMENSION		ROLLING CIRCUMFERENCE (mm)	MEASURING RIM WIDTH (Inch)	ALTERNATE RIM (Inch)	RRC	Wet	Noise db	ABC Noise	Rim Protector
					OVERALL DIA. (mm)	OVERALL WIDTH (mm)	STATIC RADIUS (mm)	STATIC WIDTH (mm)								
13	60	185/60 R13	80V	5.0	552	189	252	206	1684	5.5	5.0 - 6.5	D	D	70	B	-
		205/60 R13	86V	5.0	576	209	261	228	1757	6.0	5.5 - 7.5	D	D	71	B	-
	45	225/45 R13	84V	5.0	532	225	244	245	1623	7.5	7.5	D	D	71	B	-
14	60	185/60 R14	82V	5.0	578	189	265	206	1763	5.5	5.0 - 6.5	D	D	70	B	-
	55	195/55 R15	89V	5.0	595	201	274	219	1815	6.0	5.5 - 7.0	D	D	72	B	-
15	50	195/50 R15	82V	5.0	577	201	267	219	1760	6.0	5.5 - 7.0	D	D	71	B	-
		205/50ZR15	89W	5.0	587	214	271	233	1790	6.5	5.5 - 7.5	D	D	72	B	-
		225/50ZR15	91W	5.0	607	233	279	254	1851	7.0	6.0 - 8.0	D	D	71	B	-
	45	235/50ZR15	94W	5.0	617	245	283	267	1882	7.5	6.5 - 8.5	D	D	71	B	-
16	45	225/45ZR15	91W	5.0	583	225	269	245	1778	7.5	7.0 - 8.5	D	D	72	B	-
	55	205/55ZR16	94W	5.0	632	214	291	233	1928	6.5	5.5 - 7.5	D	D	71	B	-
		195/50ZR16	84W	5.0	602	201	279	219	1836	6.0	5.5 - 7.0	D	D	71	B	-
	50	205/50ZR16	87W	5.0	612	214	283	233	1867	6.5	5.5 - 7.5	D	D	71	B	-
		255/50ZR16	99W	5.0	662	265	303	289	2019	8.0	7.0 - 9.0	D	D	72	B	-
17	45	205/45ZR16	87W	5.0	590	206	275	225	1800	7.0	6.5 - 7.5	D	D	72	B	-
		225/45ZR16	93W	5.0	608	225	282	245	1854	7.5	7.0 - 8.5	D	D	72	B	-
		245/45ZR16	94W	5.0	626	243	289	265	1909	8.0	7.5 - 9.0	D	D	71	B	-
	50	205/50ZR17	89W	5.0	638	214	296	233	1946	6.5	5.5 - 7.5	D	D	71	B	-
		205/45ZR17	88W	5.0	616	206	288	225	1879	7.0	6.5 - 7.5	D	D	71	B	-
	45	215/45ZR17	91W	5.0	626	213	292	232	1909	7.0	7.0 - 8.0	D	D	71	B	-
		225/45ZR17	94W	5.0	634	225	295	245	1934	7.5	7.0 - 8.5	D	D	71	B	-
18	40	235/45ZR17	94W	5.0	644	236	299	257	1964	8.0	7.5 - 9.0	D	D	71	B	-
		205/40ZR17	84W	5.0	596	212	280	231	1818	7.5	7.0 - 8.0	D	D	71	B	-
		235/40ZR17	94W	5.0	620	241	289	263	1891	8.5	8.0 - 9.5	D	D	72	B	-
	40	245/40ZR17	95W	5.0	628	248	292	270	1915	8.5	8.0 - 9.5	D	D	72	B	-
		255/40ZR17	98W	5.0	636	260	296	283	1940	9.0	8.5 - 10.0	D	D	73	B	-
19	30	275/40ZR17	98W	5.0	652	278	302	303	1989	9.5	9.0 - 10.5	D	D	71	B	-
		205/40 R18	86W	5.0	621	212	292	231	1894	7.5	7.0 - 8.0	D	D	72	B	-
		225/40ZR18	92Y	5.0	637	230	299	251	1943	8.0	7.5 - 9.0	D	D	72	B	-
		235/40ZR18	95Y	5.0	645	241	302	263	1967	8.5	8.0 - 9.5	D	D	72	B	-
		245/40ZR18	97Y	5.0	653	248	305	270	1992	8.5	8.0 - 9.5	D	D	72	B	-
	35	255/35ZR18	94Y	5.0	635	260	298	283	1937	9.0	8.5 - 10.0	D	D	73	B	-
		265/35ZR18	97Y	5.0	643	271	301	295	1961	9.5	9.0 - 10.5	D	D	73	B	-
		275/35ZR18	95Y	5.0	649	278	303	303	1979	9.5	9.0 - 10.5	D	D	72	B	-
	30	295/30ZR18	98Y	5.0	635	301	298	328	1937	10.5	10.0 - 11.0	D	D	75	B	-
		235/35ZR19	91Y	5.0	647	241	305	263	1973	8.5	8.0 - 9.5	D	D	72	B	-
20	35	275/35ZR19	96Y	5.0	675	278	316	303	2059	9.5	9.0 - 10.5	D	D	71	B	-
		285/35ZR19	99Y	5.0	683	290	319	316	2083	10.0	9.5 - 11.0	D	D	73	B	-
		265/30ZR19	93Y	5.0	643	271	304	295	1961	9.5	9.0 - 10.0	D	D	73	B	-
	30	295/30ZR19	100Y	5.0	661	301	311	328	2016	10.5	10.0 - 11.0	D	D	75	B	-
		305/30 R19	102Y	5.0	667	313	313	341	2034	11.0	10.5 - 11.5	D	D	75	B	-
20	35	255/35ZR20	93Y	5.0	686	260	323	283	2092	9.0	8.5 - 10.0	D	D	71	B	-
		285/35ZR20	100Y	5.0	708	290	332	316	2159	10.0	9.5 - 11.0	D	D	74	B	-
	30	285/30ZR20	95Y	5.0	680	290	321	316	2074	10.0	9.5 - 10.5	D	D	73	B	-
	315/30ZR20	101Y	5.0	703	320	328	349	2209	11.0	10.5 - 11.5	D	D	74	B	-	



Optimum products can only be obtained if you know what demands they are expected to fulfil. For that reason we concentrate on the perfect combination of road and tires. It goes without saying that each TOYO tire undergoes an extensive research, development and test phase to achieve this.

Only repeatedly tried and tested high quality and effective materials can produce the road performance which has distinguished us for years. We make the highest demands not only of road performance and safety, but also of attractive design so you can expect innovation from TOYO TIRES for a first-class driving experience.

Innovations for a first class ride.

MODEL	LHD/RHD	PATTERN	TIRE SIZE	CATEGORY	WEIGHT (KG)	RRC	WET	NOISE dB	NOISE
Toyota Lexus GX / Land Cruiser 250	LHD/RHD	Open Country A33A	265/70 R18 116H OPA3GA TL	SUV	17.633	B	C	73	B
Mazda CX-3 (minor change 2018)	LHD	Proxes R52	215/50 R18 92V PXR52 TL	SUV	10.962	D	C	67	A
Mazda CX-3 (minor change 2018)	RHD	Proxes R52A	215/50 R18 92V PXR52A TL	SUV	10.962	D	C	67	A
Mazda CX-30	LHD	Proxes R56	215/55 R18 95H PXR56 TL	PCR(55)	10.460	C	B	67	A
Mazda CX-30	RHD	Proxes R56	215/55 R18 95H PXR56 TL	PCR(55)	10.460	C	B	67	A
Mazda CX-5 (new model 2017)	RHD	Proxes R46	225/55 R19 99V PXR46 TL	SUV	13.605	C	C	70	B
Mazda CX-5 (new model 2017)	LHD	Proxes R46A	225/55 R19 99V PXR46A TL	SUV	13.605	C	C	70	B
Mazda CX-5 (new model 2017)	RHD	Proxes R46	225/55 R19 99V PXR46 TL	SUV	12.941	C	C	70	B
Mazda CX-60 (OE Fitment)	LHD	Proxes Sport	235/50 R20 100W PXSPQ TL	PCR(50)	11.327	B	B	70	B
Mazda CX-60 (OE Fitment)	RHD	Proxes Sport	235/50 R20 100W PXSPQ TL	PCR(50)	11.327	B	B	70	B
Mazda J30K (OE Fitment)	LHD	Proxes Sport	235/50 R20 104W PXSPG TL XL	PCR(50)	11.200	B	B	70	B
Mazda J30K (OE Fitment)	RHD	Proxes Sport	235/50 R20 104W PXSPG TL XL	PCR(50)	11.360	B	B	70	B
Mazda Mazda 2 (2019)	RHD	Proxes R55	185/60 R16 86H PXR55 TL	PCR(60)	7.400	B	B	68	B
Mazda Mazda 2 (2019)	LHD	Proxes R55A	185/60 R16 86H PXR55A TL	PCR(60)	7.381	B	B	69	B
Mazda Mazda 3 (2018 LRR(STD))	LHD	Proxes R51A	215/45 R18 89W PXR51A TL	PCR(45)	9.832	C	C	69	B
Mazda Mazda 3 (2018 LRR(STD))	RHD	Proxes R51A	215/45 R18 89W PXR51A TL	PCR(45)	9.833	C	C	69	B
Mazda Mazda 6	LHD	Proxes R54	225/55 R17 97V PXR54 TL	PCR(55)	11.546	D	C	69	B
Mazda Mazda 6	RHD	Proxes R54A	225/55 R17 97V PXR54ATL	PCR(55)	11.546	D	C	69	B



OPEN COUNTRY OPA33A / B - LEXUS GX / LAND CRUISER 250

RIM DIA.	ASPECT RATIO	TIRE SIZE	LOAD INDEX SPEED SYMBOL	PATTERN	TYPE	TREAD DEPTH (mm)	INFLATED DIMENSION		LOADED DIMENSION		ROLLING CIRCUMFERENCE (mm)	MEASURING RIM WIDTH (inch)	ALTERNATE RIM (inch)	RRC	Wet	Noise db	ABC Noise	Rim Protector
							OVERALL DIA. (mm)	OVERALL WIDTH (mm)	STATIC RADIUS (mm)	STATIC WIDTH (mm)								
18	70	265/70 R18	116H	OPA3GA	RHD	8.5	763	260	348	283	2327	-	-	B	C	73	-	-
		265/70 R18	116H	OPA3GA	LHD	8.5	763	260	348	283	2327	-	-	B	C	73	-	-

PROXES PXR52 / A - MAZDA CX-3 (2018)

RIM DIA.	ASPECT RATIO	TIRE SIZE	LOAD INDEX SPEED SYMBOL	PATTERN	TYPE	TREAD DEPTH (mm)	INFLATED DIMENSION		LOADED DIMENSION		ROLLING CIRCUMFERENCE (mm)	MEASURING RIM WIDTH (inch)	ALTERNATE RIM (inch)	RRC	Wet	Noise db	ABC Noise	Rim Protector
							OVERALL DIA. (mm)	OVERALL WIDTH (mm)	STATIC RADIUS (mm)	STATIC WIDTH (mm)								
18	50	215/50 R18	92V	PXR52	LHD	7.7	675	228	263	248	2092	-	-	D	C	67	A	-
		215/50 R18	92V	PXR52A	RHD	7.7	675	228	263	248	2092	-	-	D	C	67	A	-

PROXES PXR56 / A - MAZDA CX-30 (2019)

RIM DIA.	ASPECT RATIO	TIRE SIZE	LOAD INDEX SPEED SYMBOL	PATTERN	TYPE	TREAD DEPTH (mm)	INFLATED DIMENSION		LOADED DIMENSION		ROLLING CIRCUMFERENCE (mm)	MEASURING RIM WIDTH (inch)	ALTERNATE RIM (inch)	RRC	Wet	Noise db	ABC Noise	Rim Protector
							OVERALL DIA. (mm)	OVERALL WIDTH (mm)	STATIC RADIUS (mm)	STATIC WIDTH (mm)								
18	55	215/55 R18	95H	PXR56	RHD	7.5	697	225	272	245	2160	-	-	C	B	67	A	-
		215/55 R18	95H	PXR56	LHD	7.5	697	225	272	245	2160	-	-	C	B	67	A	-

PROXES PXR46 / A - MAZDA CX-5 (2017) / TOYOTA RAV4 (2017)

RIM DIA.	ASPECT RATIO	TIRE SIZE	LOAD INDEX SPEED SYMBOL	PATTERN	TYPE	TREAD DEPTH (mm)	INFLATED DIMENSION		LOADED DIMENSION		ROLLING CIRCUMFERENCE (mm)	MEASURING RIM WIDTH (inch)	ALTERNATE RIM (inch)	RRC	Wet	Noise db	ABC Noise	Rim Protector
							OVERALL DIA. (mm)	OVERALL WIDTH (mm)	STATIC RADIUS (mm)	STATIC WIDTH (mm)								
19	55	225/55 R19	99V	PXR46	RHD	8.0	734	234	286	255	2275	-	-	C	C	70	B	-
		225/55 R19	99V	PXR46	RHD	8.0	735	235	286	256	2278	-	-	C	C	70	B	-
		225/55 R19	99V	PXR46A	LHD	8.0	734	234	286	255	2275	-	-	C	C	70	B	-

PROXES PXSPQ - MAZDA CX-60 (NEW) / MAZDA J-30

RIM DIA.	ASPECT RATIO	TIRE SIZE	LOAD INDEX SPEED SYMBOL	PATTERN	TYPE	TREAD DEPTH (mm)	INFLATED DIMENSION		LOADED DIMENSION		ROLLING CIRCUMFERENCE (mm)	MEASURING RIM WIDTH (inch)	ALTERNATE RIM (inch)	RRC	Wet	Noise db	ABC Noise	Rim Protector
							OVERALL DIA. (mm)	OVERALL WIDTH (mm)	STATIC RADIUS (mm)	STATIC WIDTH (mm)								
20	50	235/50 R20	104W XL	PXSPG	LHD	8.0	-	-	-	-	-	-	-	B	B	70	B	•
		235/50 R20	104W XL	PXSPG	RHD	8.0	744	242	290	264	2306	-	-	B	B	70	B	•
		235/50 R20	100W	PXSPQ	LHD	8.0	744	242	290	264	2306	-	-	B	B	70	B	•
		235/50 R20	100W	PXSPQ	RHD	8.0	744	242	290	264	2306	-	-	B	B	70	B	•

PROXES PXR51A - MAZDA 3 (2018)

RIM DIA.	ASPECT RATIO	TIRE SIZE	LOAD INDEX SPEED SYMBOL	PATTERN	TYPE	TREAD DEPTH (mm)	INFLATED DIMENSION		LOADED DIMENSION		ROLLING CIRCUMFERENCE (mm)	MEASURING RIM WIDTH (inch)	ALTERNATE RIM (inch)	RRC	Wet	Noise db	ABC Noise	Rim Protector
							OVERALL DIA. (mm)	OVERALL WIDTH (mm)	STATIC RADIUS (mm)	STATIC WIDTH (mm)								
18	45	215/45 R18	89W	PXR51A	LHD	8.0	654	218	255	2382	2027	-	-	C	C	69	B	•
		215/45 R18	89W	PXR51A	RHD	8.0	654	218	255	238	2027	-	-	C	C	69	B	•

PROXES PXR55 / A - MAZDA 2 (2019)

RIM DIA.	ASPECT RATIO	TIRE SIZE	LOAD INDEX SPEED SYMBOL	PATTERN	TYPE	TREAD DEPTH (mm)	INFLATED DIMENSION		LOADED DIMENSION		ROLLING CIRCUMFERENCE (mm)	MEASURING RIM WIDTH (inch)	ALTERNATE RIM (inch)	RRC	Wet	Noise db	ABC Noise	Rim Protector
							OVERALL DIA. (mm)	OVERALL WIDTH (mm)	STATIC RADIUS (mm)	STATIC WIDTH (mm)								
16	60	185/60 R16	86H	PXR55	RHD	6.8	633	192	247	209	1962	-	-	B	B	68	-	-
		185/60 R16	86H	PXR55A	LHD	6.8	633	192	247	209	1962	-	-	B	B	69	-	-

PROXES PXR54 / A - MAZDA 6 (2018-)

RIM DIA.	ASPECT RATIO	TIRE SIZE	LOAD INDEX SPEED SYMBOL	PATTERN	TYPE	TREAD DEPTH (mm)	INFLATED DIMENSION		LOADED DIMENSION		ROLLING CIRCUMFERENCE (mm)	MEASURING RIM WIDTH (inch)	ALTERNATE RIM (inch)	RRC	Wet	Noise db	ABC Noise	Rim Protector
							OVERALL DIA. (mm)	OVERALL WIDTH (mm)	STATIC RADIUS (mm)	STATIC WIDTH (mm)								
17	55	225/55 R17	97V	PXR54	LHD	7.3	678	235	264	256	2102	-	-	D	C	69	B	-
		225/55 R17	97V	PXR54A	RHD	7.3	678	235	264	256	2102	-	-	D	C	69	B	-





TIRE CARE AND MAINTENANCE

Proper care of tires increases road safety and tire life.

Key Advice:

Air Pressure

Your safety depends on maintaining the prescribed air pressure. Always follow the recommendations of the vehicle manufacturer unless you have specific written advice from a tire maker.

A tire driven on with insufficient air pressure is a serious safety risk. The increased deformation of the casing leads to excessive heat build up which can result in sudden tire failure. Additionally wear will increase especially in the shoulder area of the tread necessitating premature removal.

Over inflated tires will have reduced road performance and inferior shock absorption. Additionally, wear will increase in the centre of the tread leading to premature removal.

Most important points (recommendations):

1. Measure air pressure on cold tires (before driving).
2. Air pressure must correspond to axle load (see operating instructions).
3. Air pressure must be kept equal across an axle.
4. Check air pressure at least once per week.
5. Check air pressure before each long trip and increase by 0.2 bar, so that the tire temperature can be kept low at high speed.
6. Air pressure for M+S tires should be 0.2 to 0.3 bar higher than the corresponding summer tires.
7. After checking air pressure always refit the valve caps, as they prevent dust and dirt from entering and compromising air tightness. Valve caps with a sealing ring are best, as they act as a secondary air seal assisting the tire valves.



TIRE CARE AND MAINTENANCE

Tire Sizes

The vehicle registration documents often show the tire sizes a vehicle should be supplied with. Taking into account axle load and maximum speed (incl. variation) care should be taken that the tires have the necessary load and speed index. In the case of V/W/Y tires the maximum load deduction (for V max > 210/240/270 km/h) must also be taken into account.

Loads

Like insufficient air pressure, vehicle overloading can lead to premature wear and tire failure. The vehicle registration documents may detail among other things the maximum kerbside weight of the vehicle in kilogrammes as well as the maximum axle weight in kilogrammes for the front and the rear axles. Overloading can easily occur when going on holiday with a full car, roof rack and/or caravan.

LI	kg	LI	kg	LI	kg	LI	kg	LI	kg	LI	kg
65	290	81	462	97	730	113	1150	129	1850	145	2900
66	300	82	485	98	750	114	1180	130	1900	146	3000
67	307	83	487	99	775	115	1215	131	1950	147	3075
68	315	84	500	100	800	116	1250	132	2000	148	3150
69	325	85	515	101	825	117	1285	133	2060	149	3250
70	335	86	530	102	850	118	1320	134	2120	150	3350
71	345	87	545	103	875	119	1360	135	2180	151	3450
72	355	88	560	104	900	120	1400	136	2240	152	3550
73	365	89	580	105	925	121	1450	137	2300	153	3650
74	375	90	600	106	950	122	1500	138	2360	154	3750
75	387	91	615	107	975	123	1550	139	2430	155	3875
76	400	92	630	108	1000	124	1600	140	2500	156	4000
77	412	93	650	109	1030	125	1650	141	2575	157	4125
78	425	94	670	110	1060	126	1700	142	2650	158	4250
79	437	95	690	111	1090	127	1750	143	2725	159	4375
80	450	96	710	112	1120	128	1800	144	2800	160	4500

Speed

The tires fitted by a vehicle manufacturer have the appropriate speed symbol considering the maximum speed. It is possible to switch to the same tire size with a higher speed index, but tires should never be substituted for tires with a speed symbol equal to less than the maximum speed of the vehicle (incl. variation).

Exceptions are M+S radial winter tires: in this case, care must be taken not to exceed the speeds indicated by the symbol on the M+S tire. Vehicles capable of higher speed than M+S tire speed symbol indicates, must have a notice, visible to the driver indicating the maximum speeds of the M+S tires. In some countries this is a legal requirement.

Speed Symbol	J	K	L	M	N	P	Q	R	S	T	U	H	V	W	Y	(Y)
Maximum Speed km/h	100	110	120	130	140	150	160	170	180	190	200	210	240	270	300	OVER 300

For applications outside the range of the Y speed symbol, the service conditions (including the actual speed capabilities, load capabilities and the relevant inflation pressure) for vehicle characteristics will be agreed between the vehicle and tire manufacturers when using ZR marked tires with a service description within brackets, for example "(95Y)".

All uses of Performance characteristics in this catalogue are displayed as a guide only, to allow comparison with other products of the same category. Their purpose is to help select the most appropriate tire. No guarantee of performance can be inferred from these characteristics.

All Toyo brand tires are subject to continuous development. While every effort is made to describe goods and services accurately in this publication, no warranty is given as to accuracy and no responsibility will be accepted for any error or omission. TOYO TIRES reserves the right to amend the specification of tires without notice.



TOYO TIRES

Toyo Tire Holdings of Europe GmbH
Halskestrasse 3-5
47877 Willich
Germany

+49 (0) 2154 - 89 11 1 11
info@toyotires.eu
www.toyotires.eu



/ToyoTiresEurope



/ToyoTire



/ToyoTire

Dealer